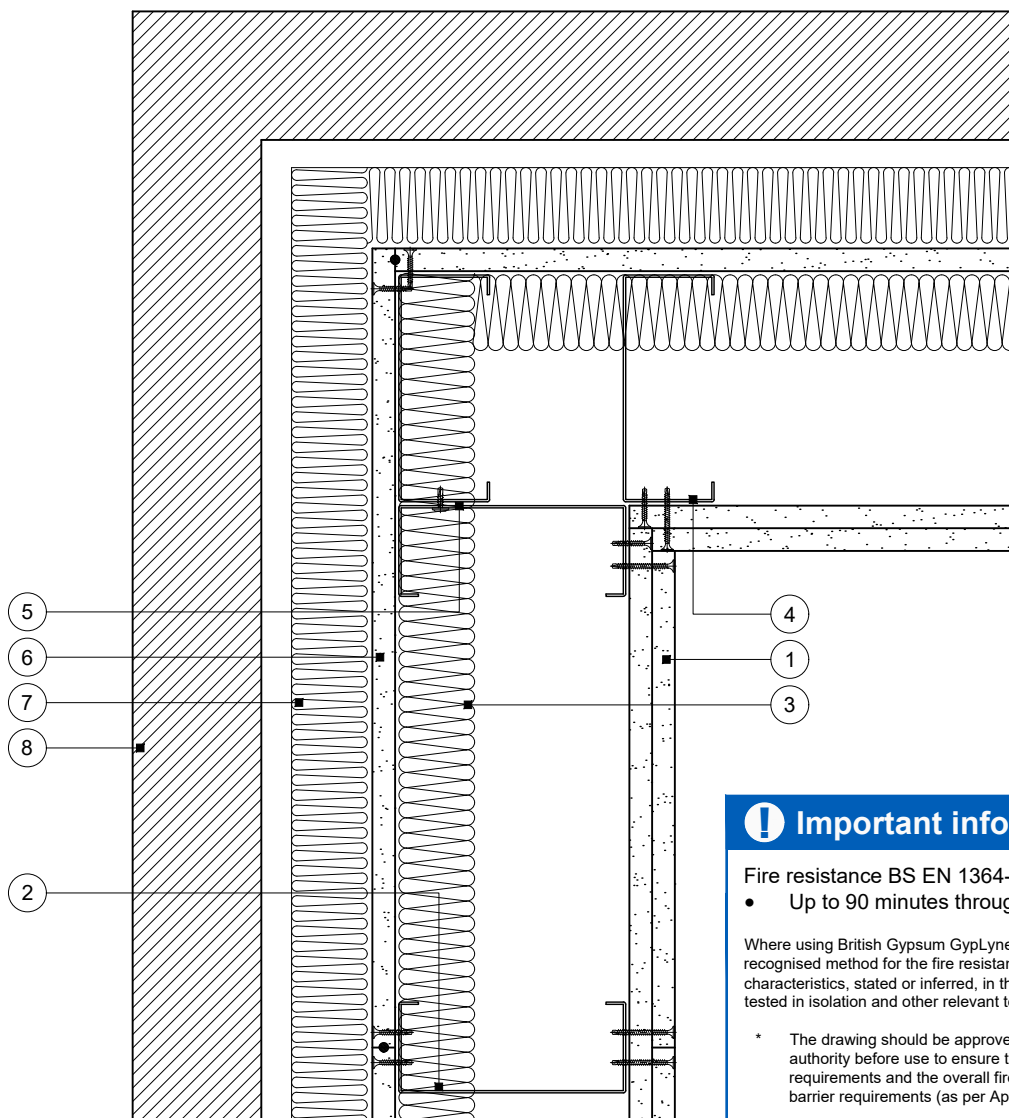


This drawing provides guidance to achieve indicative performance criteria for specific design conditions

GypLyner Xternal

- 1 Two layers Gyproc plasterboard or Glasroc specialist board fixed with British Gypsum Jack-Point Screws to SFS (max. 2mm metal thickness) at 300mm centres (200mm centres at external angles)
- 2 Indicative Intrastack SFS studs at specified centres
- 3 Isover insulation where required
- 4 Additional SFS stud at junction
- 5 SFS studs fixed together with suitable screws in accordance with manufacturer's instructions
- 6 One layer 12.5mm Glasroc X Sheathing Board fixed with 25mm Glasroc X Screws (max. 2mm metal thickness) at 300mm centres. Continuous 6mm bead of Glasroc X Sealant at board joints
- 7 Isover Polterm Max Plus (thickness to suit specification) suitably fixed through board to SFS studs
- 8 Indicative external finish with appropriate cavity barriers by others



! Important information

Fire resistance BS EN 1364-1

- Up to 90 minutes through wall subject to specification

Where using British Gypsum GypLyner Xternal SFS wraparound system as there is no recognised method for the fire resistance testing of junction, any performance characteristics, stated or inferred, in this detail are estimated based on each system tested in isolation and other relevant test data*

* The drawing should be approved by the project design and management authority before use to ensure that it meets with their specific project requirements and the overall fire strategy for compartmentation and cavity barrier requirements (as per Approved Document B)

External corner

Title: Construction detail

Scale at A4: 1:5

Drawn: MBH

Date: December 2024

Approved: MKF JMC

Dwg No.: CN-225-014

Revision: -

Technical Support Team | british-gypsum.com

This drawing is provided to customers free of charge and the details shown are subject to the accuracy of the information provided to British Gypsum at the time the drawing was originally requested. The drawing should therefore be approved by the project design and management authority before use to ensure that it meets with their specific project requirements. It should also be read in conjunction with British Gypsum's current literature available at www.british-gypsum.com. Taping and finishing in accordance with British Gypsum's current recommendations is assumed (with the exception of FireCase system). Please note the drawing may show British Gypsum products fixed by or to products that are non-British Gypsum products/fixings please refer to Specifying Authority for specification details. This drawing is valid at the time of issue, please check with British Gypsum for the latest version. No duty of care is owed to the recipient or any third party and British Gypsum excludes all liability in respect of the details shown save where death or personal injury is caused due to British Gypsum's negligence or for fraud.