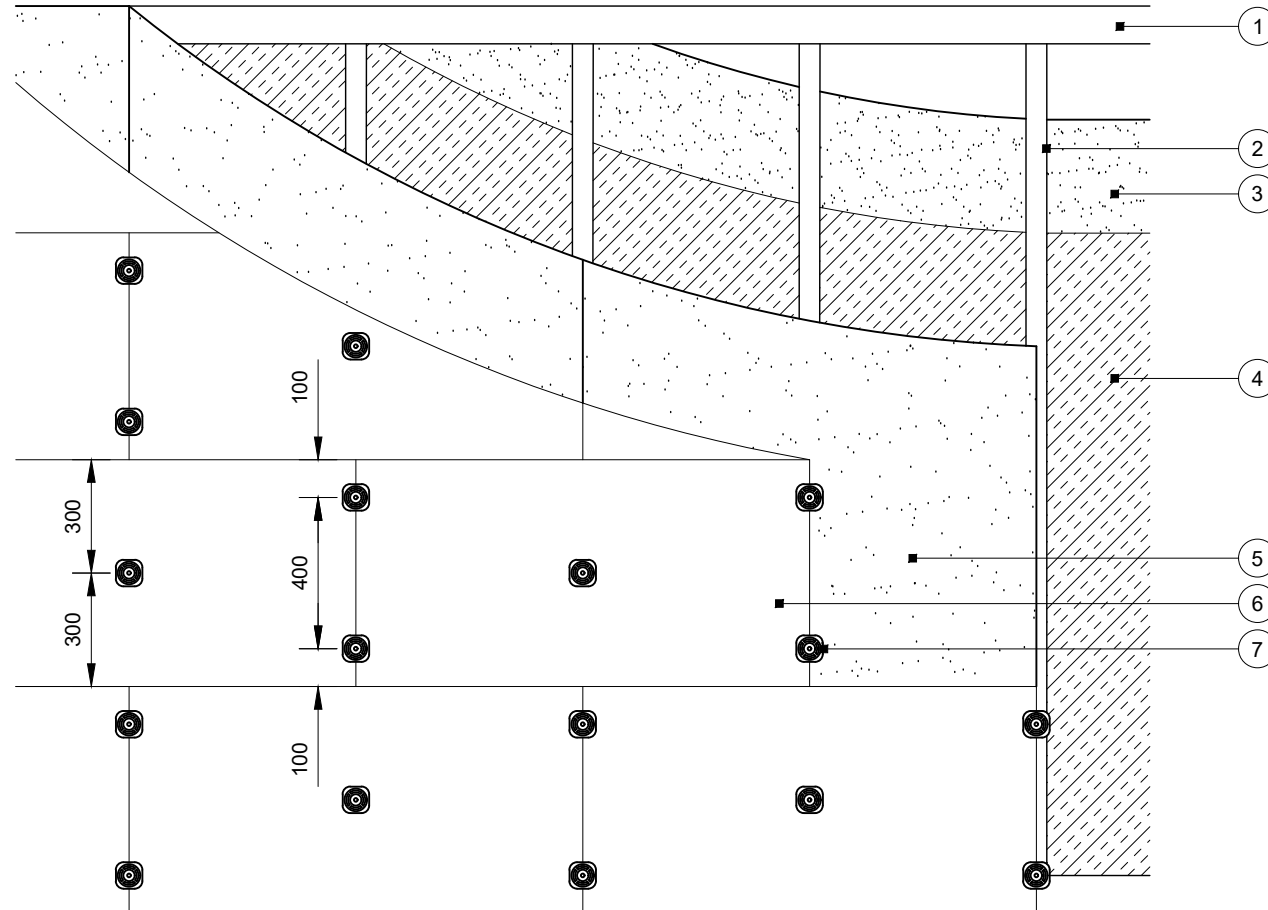


Construction Detail

This drawing provides guidance to achieve indicative performance criteria for specific design conditions

GypLyner Xternal



- 1 Indicative Intrastack SFS track suitably fixed to floor/soffit
- 2 Indicative Intrastack SFS studs at specified centres
- 3 Gyproc plasterboard or Glasroc specialist board fixed with British Gypsum Jack-Point Screws (max. 2mm metal thickness) at 300mm centres (200mm centres at external angles)
- 4 Isover insulation where required
- 5 One layer 12.5mm Glasroc X Sheathing Board fixed with 25mm Glasroc X Screws (max. 2mm metal thickness) at 300mm centres. Continuous 6mm bead of Glasroc X Sealant at board joints
- 6 Isover Polterm Max Plus fixed through board to stud with SFS stainless steel screws and retained with stress plate square retaining washers, ensure horizontal joints are staggered by 300mm with those in the underlying Glasroc X Sheathing Board
- 7 Indicative SFS stress plate square retaining washers

Important information

Fire resistance BS EN 1364-1

- 60 to 120 minutes through wall subject to specification

Wall elevation

Where Isover Polterm Max Plus is integral to specification to achieve fire resistance and/or sound insulation performance

Title: Construction detail

Scale at A4: 1:20

Drawn: MBH

Date: December 2024

Approved: MKF JMC

Dwg No.: CN-225-012

Revision: -

Technical Support Team | british-gypsum.com

This drawing is provided to customers free of charge and the details shown are subject to the accuracy of the information provided to British Gypsum at the time the drawing was originally requested. The drawing should therefore be approved by the project design and management authority before use to ensure that it meets with their specific project requirements. It should also be read in conjunction with British Gypsum's current literature available at www.british-gypsum.com. Taping and finishing in accordance with British Gypsum's current recommendations is assumed (with the exception of FireCase system). Please note the drawing may show British Gypsum products fixed by or to products that are non-British Gypsum products/fixings please refer to Specifying Authority for specification details. This drawing is valid at the time of issue, please check with British Gypsum for the latest version. No duty of care is owed to the recipient or any third party and British Gypsum excludes all liability in respect of the details shown save where death or personal injury is caused due to British Gypsum's negligence or for fraud.