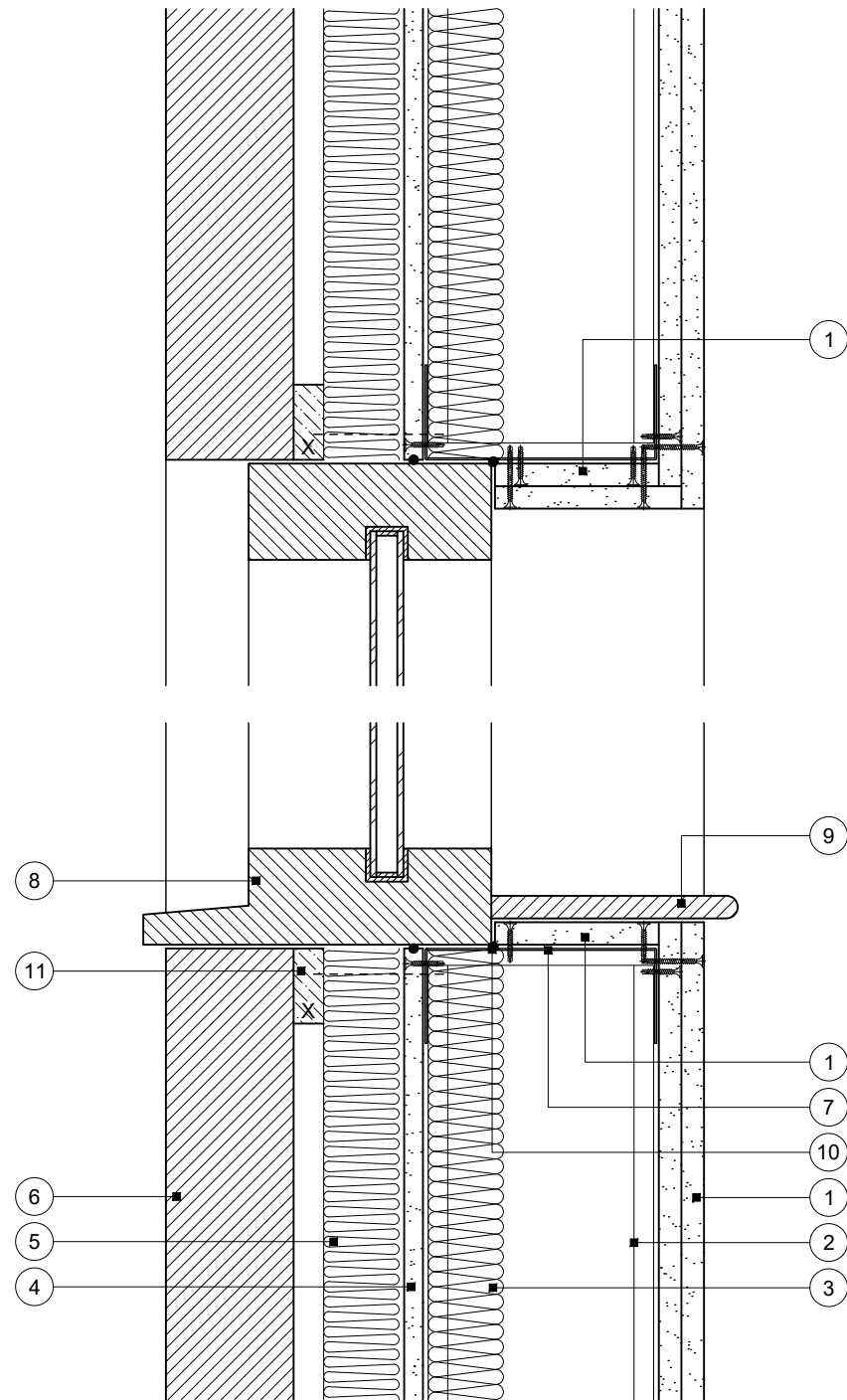


# Construction Detail

This drawing provides guidance to achieve indicative performance criteria for specific design conditions

## GypLyner Xternal SFS



**Window cill and head**

- 1 One or two layers Gyproc plasterboard or Glasroc specialist board fixed with British Gypsum Jack-Point Screws (max. 2mm metal thickness) at 300mm centres (200mm centres at external angles)
- 2 Indicative Intrastack SFS studs at specified centres and locations installed in accordance with manufacturer's instructions
- 3 Indicative insulation
- 4 One layer 12.5mm Glasroc X Sheathing Board fixed with 25mm Glasroc X Screws (max. 2mm metal thickness) at 300mm centres. Continuous 6mm bead of Glasroc X Sealant at board joints
- 5 Isover Polterm Max Plus suitably fixed through board to SFS
- 6 Indicative external finish
- 7 Indicative Intrastack SFS track installed in accordance with manufacturer's instructions
- 8 Indicative window frame
- 9 Indicative window cill
- 10 Gyproc Sealant for optimum sound insulation
- 11 Cavity barrier where required (see important information)

### Important information

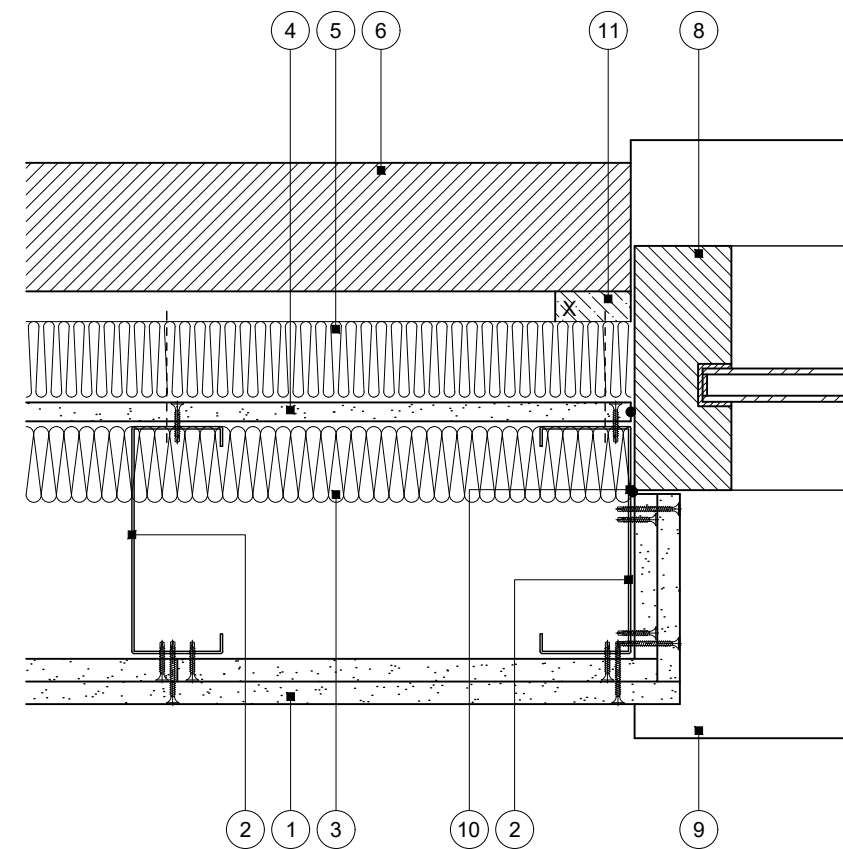
Fire resistance BS EN 1364-1

- Fire resistance subject to non-load bearing British Gypsum GypLyner Xternal SFS wraparound system and window specification

Subject to regulatory requirements for cavity barrier installations and fire resistance of insulation board used in steel frame lining cavity, it may be necessary to include a cavity barrier to external cladding\*

\* The drawing should be approved by the project design and management authority before use to ensure that it meets with their specific project requirements and the overall fire strategy for compartmentation and cavity barrier requirements (as per Approved Document B)

Window should be independently supported by SFS framework



**Window reveal**

Title: Construction detail

Scale at A3: 1:5

Drawn: MBH

Date: December 2024

Approved: MKF JMC

Dwg No.: CN-225-010

Revision: -

Technical Support Team | british-gypsum.com

This drawing is provided to customers free of charge and the details shown are subject to the accuracy of the information provided to British Gypsum at the time the drawing was originally requested. The drawing should therefore be approved by the project design and management authority before use to ensure that it meets with their specific project requirements. It should also be read in conjunction with British Gypsum's current literature available at www.british-gypsum.com. Taping and finishing in accordance with British Gypsum's current recommendations is assumed (with the exception of FireCase system). Please note the drawing may show British Gypsum products fixed by or to products that are non-British Gypsum products/fixings please refer to Specifying Authority for specification details. This drawing is valid at the time of issue, please check with British Gypsum for the latest version. No duty of care is owed to the recipient or any third party and British Gypsum excludes all liability in respect of the details shown save where death or personal injury is caused due to British Gypsum's negligence or for fraud.