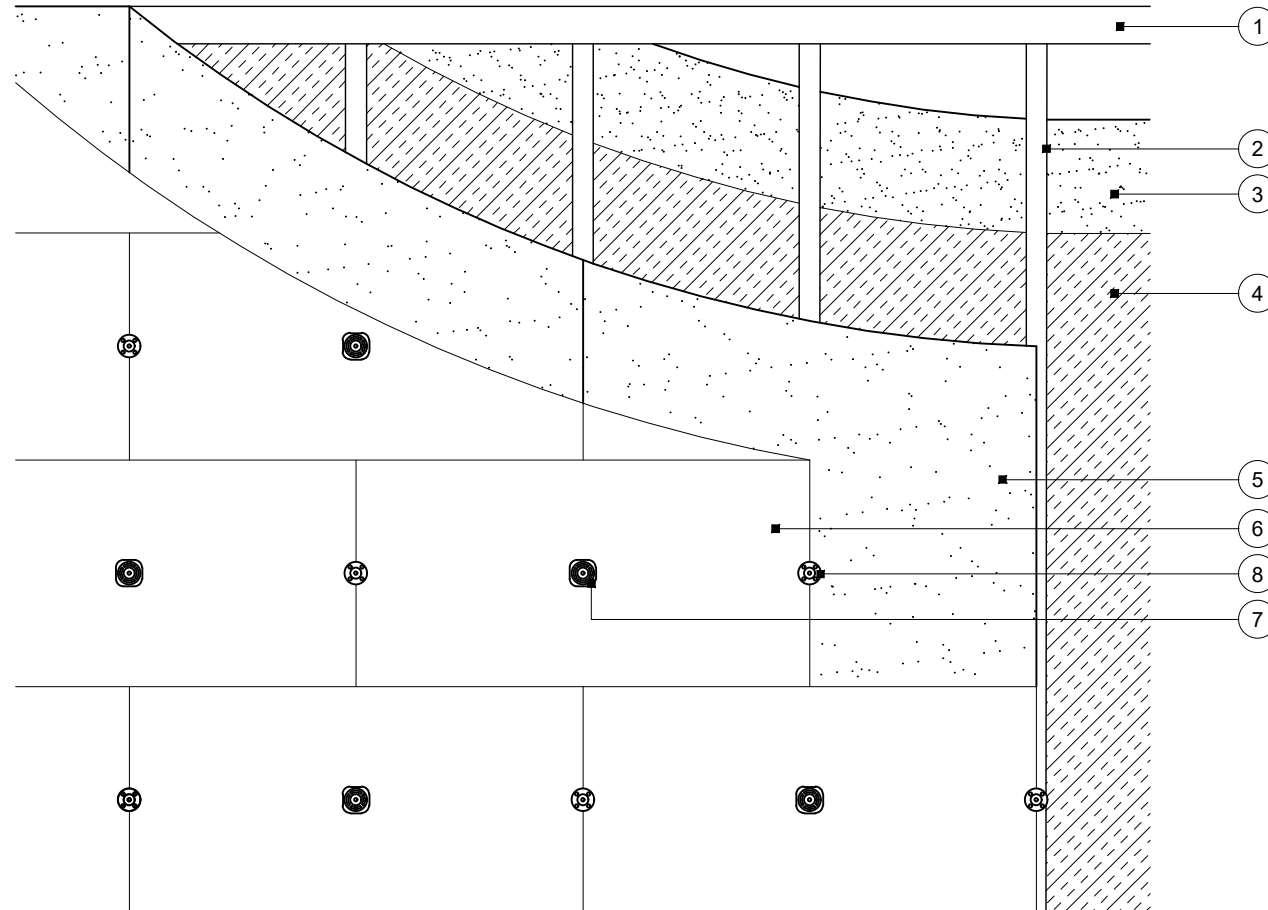


# Construction Detail

This drawing provides guidance to achieve indicative performance criteria for specific design conditions

## GypLyner Xternal



- 1 Indicative Hadley SFS channel suitably fixed
- 2 Indicative Hadley SFS studs at specified centres
- 3 Gyproc plasterboard or Glasroc specialist board fixed with British Gypsum Jack-Point Screws (max. 2mm metal thickness) at 300mm centres (200mm centres at external angles)
- 4 Isover insulation where required
- 5 One layer 12.5mm Glasroc X Sheathing Board fixed with 25mm Glasroc X Screws (max. 2mm metal thickness) at 300mm centres. Continuous 6mm bead of Glasroc X Sealant at board joints
- 6 Isover Polterm Max Plus fixed through board to stud with SFS stress plate retaining washer at centre and suitable polypropylene fixing and washer at vertical edges
- 7 Indicative SFS stress plate square retaining washers
- 8 Indicative polypropylene fixing and washer

**Important information**

Fire resistance BS EN 1364-1

- 60 to 120 minutes through wall subject to specification

### Wall elevation

Stress plate and polypropylene fixing

Rev. A 22.11.2022 Updated 'Important information' (mbh)

**Title:** Construction detail

**Scale at A4:** 1:20

**Drawn:** MBH

**Date:** August 2022

**Approved:** MFK JMC

**Dwg No.:** CN-225-004

**Revision:** A

**Technical Support Team | british-gypsum.com**

This drawing is provided to customers free of charge and the details shown are subject to the accuracy of the information provided to British Gypsum at the time the drawing was originally requested. The drawing should therefore be approved by the project design and management authority before use to ensure that it meets with their specific project requirements. It should also be read in conjunction with British Gypsum's current literature available at [www.british-gypsum.com](http://www.british-gypsum.com). Taping and finishing in accordance with British Gypsum's current recommendations is assumed (with the exception of FireCase system). Please note the drawing may show British Gypsum products/fixings please refer to Specifying Authority for specification details. This drawing is valid at the time of issue, please check with British Gypsum for the latest version. No duty of care is owed to the recipient or any third party and British Gypsum excludes all liability in respect of the details shown save where death or personal injury is caused due to British Gypsum's negligence or for fraud.