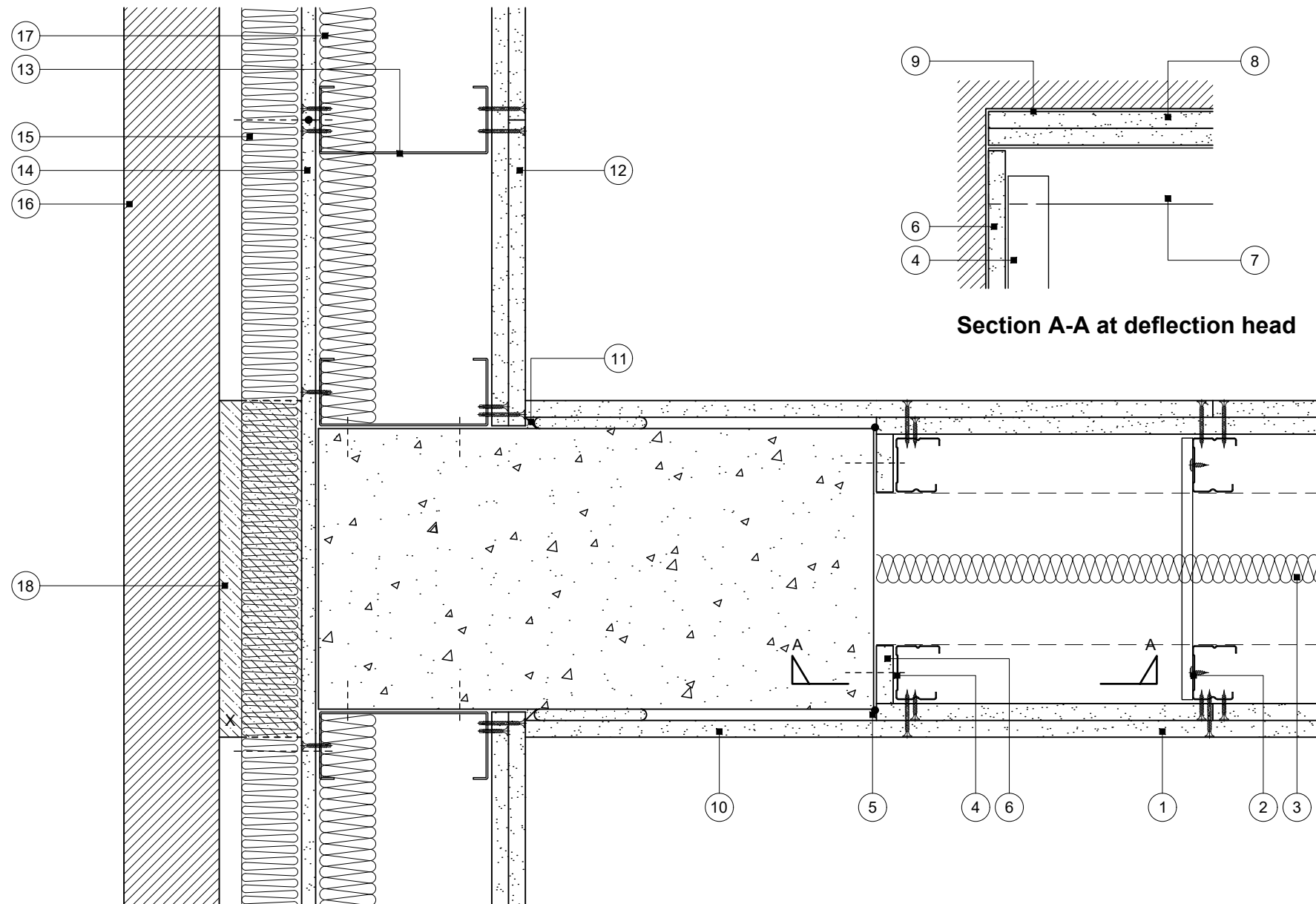


Construction Detail

This drawing provides guidance to achieve indicative performance criteria for specific design conditions

GypWall Twin Frame Braced, DriLyner Dab and GypLyner Xternal

- | | | | |
|---|---|--|---|
| <ol style="list-style-type: none"> 1 Two layers Gyproc plasterboard or Glasroc specialist board fixed with suitable British Gypsum screws at 300mm centres (200mm centres at external angles) 2 Two lines of Gypframe 'C' studs at specified centres cross braced with Gypframe 99 FC 50 Fixing Channel at 1200mm centres (staggered by 600mm between stud pairs for heights over 2400mm) fixed to each stud with two suitable British Gypsum wafer head screws 3 Isover insulation where required | <ol style="list-style-type: none"> 4 Gypframe 'C' stud suitably fixed through board to column at 600mm centres 5 Gyproc Sealant for optimum sound insulation 6 Stud width strip of board to match inner layer of partition pre-fixed to stud 7 Gypframe Deep Channel or Extra Deep Channel (to suit deflection) suitably fixed through board to soffit at 600mm centres | <ol style="list-style-type: none"> 8 One or two channel width strip(s) of board (to suit deflection). Two strips pre-fixed to channel with suitable British Gypsum screws at 600mm centres 9 Gyproc FireStrip 10 One layer Gyproc plasterboard or Glasroc specialist board fixed with dabs of Gyproc DriWall Adhesive (50-75mm wide and 250mm long) in vertical lines at 600mm centres to maintain stud module 11 Continuous fillet of Gyproc DriWall Adhesive to wall perimeter | <ol style="list-style-type: none"> 12 Two layers 15mm Gyproc SoundBloc fixed with 25mm and 41mm British Gypsum Jack-Point Screws (max. 2mm metal thickness) at 300mm centres 13 Indicative Hadley SFS studs at specified centres 14 One layer 12.5mm Glasroc X Sheathing Board fixed with 25mm Glasroc X Screws (max. 2mm metal thickness) at 300mm centres. Continuous 6mm bead of Glasroc X Sealant at board joints 15 Isover Polterm Max Plus (thickness to suit specification) suitably fixed through board to SFS studs 16 Indicative external finish 17 Indicative insulation 18 Cavity barrier where required (see important information) |
|---|---|--|---|



External SFS wall junction with concrete column

Important information

Fire resistance BS EN 1364-1

- 60 minutes through partition subject to specification
- 60 minutes through non-load bearing British Gypsum Xternal SFS wraparound system subject to specification

Where using British Gypsum GypLyner Xternal SFS wraparound system as there is no recognised method for the fire resistance testing of junction, any performance characteristics, stated or inferred, in this detail are estimated based on each system tested in isolation and other relevant test data*

Subject to regulatory requirements for cavity barrier installations and fire resistance of insulation board used in steel frame lining cavity, it may be necessary to include a cavity barrier to external cladding*

The exact construction depicted on this drawing has not been tested and assumes materials highlighted with 'X' are capable of maintaining performances of the partition. This MUST be verified with the relevant material manufacturer prior to construction

* The drawing should be approved by the project design and management authority before use to ensure that it meets with their specific project requirements and the overall fire strategy for compartmentation and cavity barrier requirements (as per Approved Document B)

For enhanced acoustic performance consideration should be given to the use of GypLyner Single with Isover insulation in the cavity as the column lining

Rev. A 08.09.23 Updated 'Important Information' (MBH)

Title: Construction detail

Scale at A3: 1:5

Drawn: NCL

Date: August 2022

Approved: MKF JMC

Dwg No.: CN-125-015

Revision: A

Technical Support Team | british-gypsum.com

This drawing is provided to customers free of charge and the details shown are subject to the accuracy of the information provided to British Gypsum at the time the drawing was originally requested. The drawing should therefore be approved by the project design and management authority before use to ensure that it meets with their specific project requirements. It should also be read in conjunction with British Gypsum's current literature available at www.british-gypsum.com. Taping and finishing in accordance with British Gypsum's current recommendations is assumed (with the exception of FireCase system). Please note the drawing may show British Gypsum products fixed by or to products that are non-British Gypsum products/fixings please refer to Specifying Authority for specification details. This drawing is valid at the time of issue, please check with British Gypsum for the latest version. No duty of care is owed to the recipient or any third party and British Gypsum excludes all liability in respect of the details shown save where death or personal injury is caused due to British Gypsum's negligence or for fraud.