

Construction Detail

This drawing provides guidance to achieve indicative performance criteria for specific design conditions

GypWall Twin Frame Braced and DriLyner Dab

- 1 Two layers Gyproc plasterboard or Glasroc specialist board fixed with suitable British Gypsum screws at 300mm centres (200mm centres at external angles)
- 2 Two lines of Gypframe 'C' studs at specified centres cross braced with Gypframe 99 FC 50 Fixing Channel at 1200mm centres (staggered by 600mm between stud pairs for heights over 2400mm) fixed to each stud with two suitable British Gypsum wafer head screws
- 3 Isover insulation where required
- 4 Gypframe 'C' stud suitably fixed through board to column at 600mm centres
- 5 Gyproc Sealant for optimum sound insulation
- 6 Stud width strip of board to match inner layer of partition pre-fixed to stud
- 7 Gypframe Deep Channel or Extra Deep Channel (to suit deflection) suitably fixed through board to soffit at 600mm centres
- 8 One or two channel width strip(s) of board (to suit deflection). Two strips pre-fixed to channel with suitable British Gypsum screws at 600mm centres
- 9 Gyproc FireStrip
- 10 One layer Gyproc plasterboard or Glasroc specialist board fixed with dabs of Gyproc DriWall Adhesive (50-75mm wide and 250mm long) in vertical lines at 600mm centres to maintain stud module

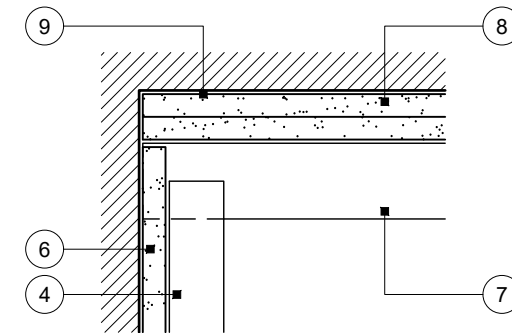
Important information

Fire resistance BS EN 1364-1

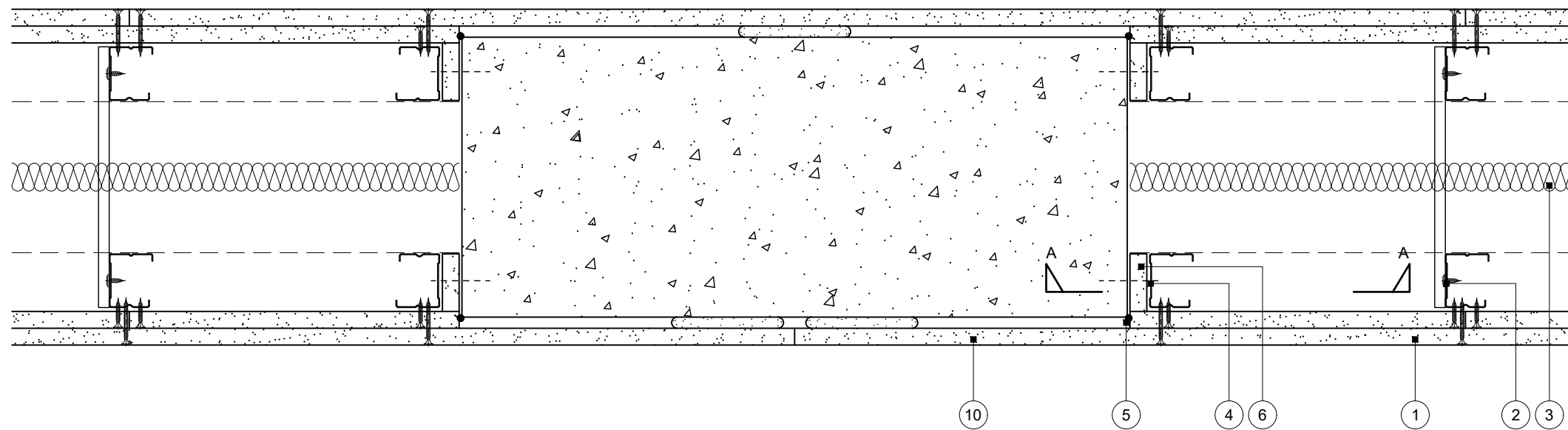
- 60 minutes through partition subject to specification

Performance is based on maintaining compartmentation through the British Gypsum partition up to the line of the abutting structural element. This is on the basis the structural element has at least the equivalent fire resistance performance to that of the partition. The drawing should be approved by the project design and management authority before use to ensure that it meets with their specific project requirements

For enhanced acoustic performance consideration should be given to the use of GypLyner Single with Isover insulation in the cavity as the column lining



Section A-A at deflection head



Concrete column abutment

Title: Construction detail

Scale at A3: 1:5

Drawn: MRC

Date: December 2021

Approved: MKF JMC

Dwg No.: CN-125-007

Revision:

Technical Support Team | british-gypsum.com

This drawing is provided to customers free of charge and the details shown are subject to the accuracy of the information provided to British Gypsum at the time the drawing was originally requested. The drawing should therefore be approved by the project design and management authority before use to ensure that it meets with their specific project requirements. It should also be read in conjunction with British Gypsum's current literature available at www.british-gypsum.com. Taping and finishing in accordance with British Gypsum's current recommendations is assumed (with the exception of FireCase system). Please note the drawing may show British Gypsum products fixed by or to products that are non-British Gypsum products/fixings please refer to Specifying Authority for specification details. This drawing is valid at the time of issue, please check with British Gypsum for the latest version. No duty of care is owed to the recipient or any third party and British Gypsum excludes all liability in respect of the details shown save where death or personal injury is caused due to British Gypsum's negligence or for fraud.