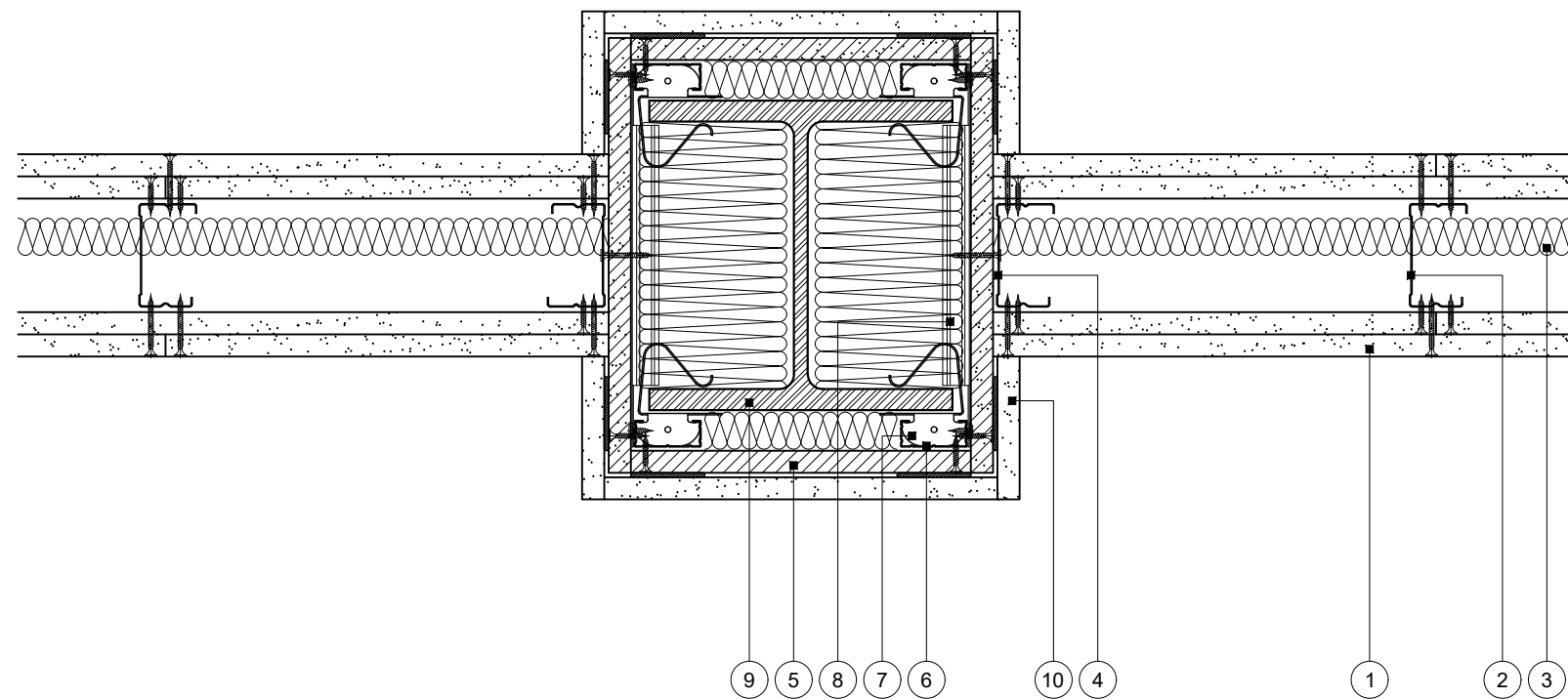


Construction Detail

This drawing provides guidance to achieve indicative performance criteria for specific design conditions

GypWall Single Frame, GypWall Single Frame Enhanced and GypLyner Encase



- 1 Two layers 15mm Gyproc SoundBloc fixed with 25mm and 40mm British Gypsum Drywall Screws at 300mm centres (200mm centres at external angles)
- 2 Gypframe 'C' studs at specified centres
- 3 Isover insulation where required
- 4 Gypframe 'C' stud fixed through board to noggings with suitable British Gypsum screws at 600mm centres (in two lines staggered by 300mm for 92mm and 146mm studs)
- 5 One layer 15mm Gyproc DuraLine fixed with 25mm British Gypsum Drywall Screws at 300mm centres
- 6 Gypframe GL1 Lining Channel clipped over steel framing clips. Lining channels extended with Gypframe GL3 Channel Connector (not shown)
- 7 Gypframe GL10 Steel Framing Clips friction fitted to flanges at 800mm centres and 100mm from each end of encasement
- 8 Gypframe GL1 Lining Channel noggings at 600mm centres (300mm centres for 92mm and 146mm studs in adjacent partition) with ends tabbed and fixed to lining channels with suitable British Gypsum wafer head screws
- 9 Indicative universal steel column
- 10 Additional layer 15mm Gyproc DuraLine fixed with 25mm diameter blobs of Gyproc Sealant at 300mm centres in lines at 300mm centres

! Important information

- Fire resistance BS EN 1364-1
- 60 minutes through partition
 - Estimated 60 minutes room to room through column encasement

- Fire protection BS EN 13381-4
- Estimated 60 minutes up to A/V (Hp/A) 183m⁻¹

As there is no recognised method for fire resistance testing of junctions, any performance characteristics, stated or inferred, in this detail are estimated based on each system tested in isolation and other relevant test data. The drawing should be approved by the project design and management authority before use to ensure that it meets with their specific project requirements

Encased column junction

Rev. A 05.12.22 Updated 'Important Information' (MBH)

Title: Construction detail

Scale at A3: 1:5

Drawn: MRC

Date: December 2021

Approved: MKF JMC

Dwg No.: CN-121-047

Revision: A

Technical Support Team | british-gypsum.com

This drawing is provided to customers free of charge and the details shown are subject to the accuracy of the information provided to British Gypsum at the time the drawing was originally requested. The drawing should therefore be approved by the project design and management authority before use to ensure that it meets with their specific project requirements. It should also be read in conjunction with British Gypsum's current literature available at www.british-gypsum.com. Taping and finishing in accordance with British Gypsum's current recommendations is assumed (with the exception of FireCase system). Please note the drawing may show British Gypsum products fixed by or to products that are non-British Gypsum products/fixings please refer to Specifying Authority for specification details. This drawing is valid at the time of issue, please check with British Gypsum for the latest version. No duty of care is owed to the recipient or any third party and British Gypsum excludes all liability in respect of the details shown save where death or personal injury is caused due to British Gypsum's negligence or for fraud.