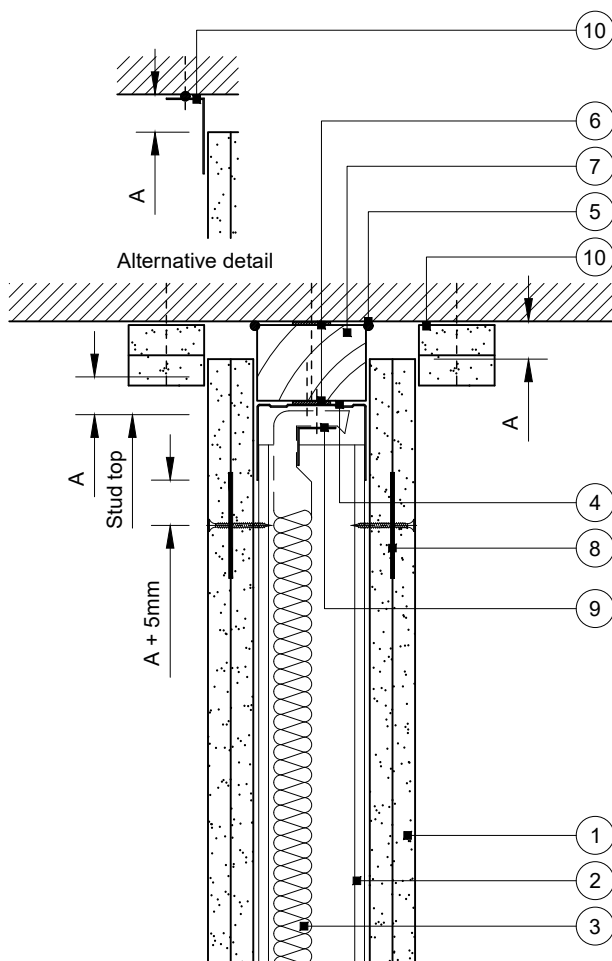


# Construction Detail

This drawing provides guidance to achieve indicative performance criteria for specific design conditions

## GypWall Single Frame

- 1 Two layers Gyproc plasterboard or Glasroc specialist board fixed with suitable British Gypsum screws at 300mm centres (200mm centres at external angles)
- 2 Gyprframe 'C' studs at specified centres
- 3 Isover insulation where required
- 4 Gyprframe Deep Channel or Extra Deep Channel (see table) suitably fixed to head plate at 600mm centres (in two lines staggered by 300mm for 94mm and 148mm channels)
- 5 Gyproc Sealant for optimum sound insulation
- 6 Gyproc FireStrip above and below timber head plate
- 7 Channel width and 50mm high timber head plate (planed on all 4 sides) suitably fixed to soffit
- 8 Gyprframe GFS1 Fixing Strap fixed through board to studs with suitable British Gypsum screws at 1200mm centres to receive uppermost board fixings (no fixings into head channel)
- 9 Gyprframe steel angle or timber batten suitably fixed to channel to retain insulation where required
- 10 Two 50mm width strips of Glasroc F FireCase fixed to soffit with suitable fire resistant fixings at 600mm centres, or Gyprframe GA4 Steel Angle bedded on bead of Gyproc Sealant and fixed to soffit with suitable fire resistant fixings at 600mm centres (see table)



### DEFLECTION (VERTICAL) HEAD DESIGN

DEFLECTION DIM. A	CHANNEL NOTE 4	CLOAKING ELEMENT NOTE 10
1-20mm	DC	Two 15mm <sup>A</sup> or GA4
21-25mm	DC	Two 20mm <sup>A</sup> or GA4
26-30mm	DC	Two 20mm <sup>A</sup>
31-40mm	EDC	Two 25mm <sup>A</sup>
41-50mm	EDC	Two 30mm <sup>A</sup>

### Important information

Fire resistance BS EN 1364-1

- 30 or 60 minutes through partition subject to specification

## Deflection head with timber head plate

Downward (vertical) movement

Rev. A 03.08.22 Annotation update (AJC)

Title: Construction detail

Scale at A4: 1:5

Drawn: MRC

Date: December 2021

Approved: MKF JMC

Dwg No.: CN-121-020

Revision: A

Technical Support Team | british-gypsum.com

This drawing is provided to customers free of charge and the details shown are subject to the accuracy of the information provided to British Gypsum at the time the drawing was originally requested. The drawing should therefore be approved by the project design and management authority before use to ensure that it meets with their specific project requirements. It should also be read in conjunction with British Gypsum's current literature available at www.british-gypsum.com. Taping and finishing in accordance with British Gypsum's current recommendations is assumed (with the exception of FireCase system). Please note the drawing may show British Gypsum products fixed by or to products that are non-British Gypsum products/fixings please refer to Specifying Authority for specification details. This drawing is valid at the time of issue, please check with British Gypsum for the latest version. No duty of care is owed to the recipient or any third party and British Gypsum excludes all liability in respect of the details shown save where death or personal injury is caused due to British Gypsum's negligence or for fraud.