

UL INTERNATIONAL (UK) LTD  
 Kingsland Business Park,  
 Unit 1-3 Horizon,  
 Wade Rd,  
 Basingstoke RG24 8AH,  
 United Kingdom

appointed according to Article 29 of Construction Products Regulation 2011 as amended by the Construction Products (Amendment etc.) (EU Exit) Regulations 2019 and the Construction Products (Amendment etc.) (EU Exit) Regulations 2020

<b>UK Technical Assessment</b>	<b>0843-UKTA-25/0025 of 28/11/2025</b>
--------------------------------	--

<b>Technical Assessment Body Issuing the UKTA:</b>	UL International (UK) Ltd
<b>Trade name of the construction product</b>	Gyproc Graphite Fire Sealant
<b>Product family to which the construction product belongs</b>	Fire Stopping and Sealing Product: <ul style="list-style-type: none"> <li>• Penetration Seals</li> </ul>
<b>Manufacturer</b>	Saint-Gobain Construction Products UK Ltd t/a British Gypsum Saint-Gobain House, East Leake, Loughborough, Leicestershire, LE12 6JU
<b>Manufacturing plant(s)</b>	A/003
<b>This UK Technical Assessment contains</b>	34 pages including 1 Annex which forms an integral part of this assessment.
<b>This UK Technical Assessment* is issued, on the basis of</b>	EAD 350454-00-1104, September 2017.
<b>This version replaces</b>	0843-UKTA-25/0025 issued 30/05/2025

Translations of this UK Technical Assessment in other languages shall fully correspond to the original issued document and should be identified as such.

Communication of this UK Technical Assessment, including transmission by electronic means, shall be in full. However, partial reproduction may be made, with the written consent of the issuing Technical Assessment Body. Any partial reproduction shall be identified as such.

\* in accordance with Construction Products Regulation 2011 as amended by the Construction Products (Amendment etc.) (EU Exit) Regulations 2019 and the Construction Products (Amendment etc.) (EU Exit) Regulations 2020

**Table of Contents**

**I. SPECIFIC PARTS OF THE UK TECHNICAL ASSESSMENT ..... 3**

1 Technical description of the product .....3

2 Specification of the intended uses of the product in accordance with the applicable UK Assessment Document (Pre-Exit European Assessment Document): EAD 350454-00-1104: 2017 .....3

3 Performance of the product and references to the methods used for its assessment .....5

4 ASSESSMENT AND VERIFICATION OF CONSTANCY OF PERFORMANCE (HEREINAFTER AVCP) SYSTEM APPLIED, WITH REFERENCE TO ITS LEGAL BASE .....6

5 Technical details necessary for the implementation of the AVCP system, as provided for in the applicable EAD .....6

6 Issued on: .....7

**ANNEX A – Resistance to Fire Classification – Gyproc Graphite Fire Sealant ..... 8**

A.1 Flexible or rigid wall constructions with wall thickness of minimum 100 mm .....8

A.1.1 Penetration seals, in drywalls\* and concrete/masonry walls ..... 8

A.1.2 Penetration seals with no backing material, in drywalls and concrete/masonry walls ..... 11

A.1.3 Penetration seals in drywalls and concrete/masonry walls ..... 13

A.2 Rigid walls constructions with wall thickness of minimum 150 mm .....15

A.2.1 Penetration seals for pipes, in concrete/masonry walls ..... 15

A.2.2 Penetration seals for cables, in concrete/masonry walls ..... 16

A.2.3 Penetration seals for pipes, in concrete/masonry walls ..... 17

A.2.4 Penetration seals for pipes, in concrete/masonry walls ..... 18

A.3 Timber wall constructions with wall thickness of minimum 100 mm.....20

A.3.1 Pipe penetration seals, in timber walls ..... 20

A.4 Rigid floor constructions with floor thickness of minimum 150 mm.....23

A.4.1 Penetration seals, surface mounted in concrete floors ..... 23

A.4.2 Penetration seals, surface mounted in concrete floors ..... 26

A.4.3 Penetration seals, surfaces mounted in concrete floors ..... 27

A.4.4 Penetration seals, surface mounted in concrete floors ..... 29

A.5 Timber floor constructions with floor thickness of minimum 150 mm .....31

A.5.1 Pipe penetration seals, in timber floors ..... 31

**ANNEX B – Air Permeability – Gyproc Graphite Fire Sealant ..... 34**

## I. SPECIFIC PARTS OF THE UK TECHNICAL ASSESSMENT

### 1 Technical description of the product

- 1) Gyproc Graphite Fire Sealant is a sealant and pipe closure device used to form penetration seals where insulated metallic pipes, combustible pipes, combustible cable conduits and cables penetrate walls and floors.
- 2) The Gyproc Graphite Fire Sealant is supplied in liquid form contained within 310ml cartridges and 300ml foil packs. The sealant is gunned into the aperture in the separating element and around the service or services, to a specified depth utilising mineral fibre insulation backing material.
- 3) The applicant has submitted a written declaration that the product and/or constituents of the product contains no substances which have been classified as dangerous according to Directive 67/548/EEC and Regulation (EC) No. 1272/2008 and listed in the 'indicative list on dangerous substances' of the EGDS – taking into account the installation conditions of the construction product and the release scenarios resulting from there.

In addition to the specific clauses relating to dangerous substances contained in this United Kingdom Technical Assessment, there may be other requirements applicable to the products falling within its scope (e.g. transposed European legislation and national laws, regulations and administrative provisions). In order to meet the provisions of the Construction Products Regulation, these requirements need also to be complied with, when and where they apply.

- 4) The use category of Gyproc Graphite Fire Sealant in relation to BWR 3 (Hygiene, health and environment) is IA1, S/W2

### 2 Specification of the intended uses of the product in accordance with the applicable UK Assessment Document (Pre-Exit European Assessment Document): EAD 350454-00-1104: 2017

Detailed information and data is given in Annex A.

The intended use of system Gyproc Graphite Fire Sealant is to reinstate the fire resistance performance of flexible wall, rigid wall and floor constructions, and timber wall and floor constructions, where they are penetrated by services.

- 1) The specific elements of construction that the system Gyproc Graphite Fire Sealant may be used to provide a penetration seal in, are as follows:

Flexible walls:	The wall must have a minimum thickness of 100 mm and comprise steel or timber studs* lined on both faces with minimum 2 layers of 12.5 mm thick boards. Flexible wall solutions may also be used in rigid walls, with a minimum density of 350 kg/m <sup>3</sup> .
Timber walls:	The wall must have a minimum thickness of 100 mm and comprise solid wood or cross-laminated timber
Rigid walls:	The wall must have a minimum thickness of 100 mm and comprise concrete, aerated concrete or masonry, with a minimum density of 650 kg/m <sup>3</sup> .
Rigid floors:	The floor must have a minimum thickness of 150 mm and comprise aerated concrete or concrete with a minimum density of 650 kg/m <sup>3</sup> .
Timber floors:	The floor must have a minimum thickness of 150 mm and comprise solid wood or cross-laminated timber.

\* no part of the penetration seal may be closer than 100 mm to a stud, the cavity must be closed between the penetration seal and the stud, and minimum 100 mm of insulation of class A1 or A2 according to EN 13501-1 must be provided within the cavity between the penetration seal and the stud.

The supporting construction must be classified in accordance with EN 13501-2 for the required fire resistance period.

Gyproc Firestopping Systems which involve services penetrating both sides of a flexible wall may also be used in the situation where the services penetrate one side of the wall only and the remaining side of the wall is not penetrated at the same point (i.e. the services continue on the inside of the wall). All fire integrity and thermal insulation ratings for such single-sided penetrations remain the same as for the equivalent double-sided penetration.

Where a backing material is described in Annex A, this can be replaced with Gyproc Graphite Fire Sealant if the total seal depth is the same or greater.

- 2) The system Gyproc Graphite Fire Sealant may be used to provide a penetration seal with specific supporting constructions and substrates (for details see Annex A).
- 3) Penetrating services through the system Gyproc Graphite Fire Sealant may be used in all angles between 90° and 45° in all directions, subject to metallic pipes only.
- 4) Where PVC pipes are mentioned in Annex A, this includes PVC-U, PVC-C and similar if the pipe is according to EN 1329-1, EN 1452-2, EN 1453-1 and EN 1566-1. Where PP pipes are mentioned in Annex A, this includes PP-MV, PP-H, PP-R and similar if the pipe is according to EN 1451-1 or DIN 8077/8078. Where PE pipes are mentioned, this includes PE-LD, PE-MD, PE-HD, PE-X and similar according to EN 1519-1, EN 12201-2 or EN 12666-1, ABS according to EN 1455-1 and pipes made from SAN+PVC according to EN 1565-1.
- 5) The provisions made in this United Kingdom Technical Assessment are based on an assumed working life of the Gyproc Graphite Fire Sealant of 25 years, provided that the conditions laid down in the manufacturer's datasheet and instructions for the packaging/transport/storage/installation/use/repair are met. The indications given on the working life cannot be interpreted as a guarantee given by the producer, but are to be regarded only as a means for choosing the right products in relation to the expected economically reasonable working life of the works.
- 6) Type Z<sub>2</sub>: intended for use at internal conditions with humidity classes other than Z<sub>1</sub>, excluding temperatures below 0°C.

### 3 Performance of the product and references to the methods used for its assessment

Product-type: Sealant/Pipe closure		Intended use: Penetration Seal
Basic requirement for construction work	Basic Requirement	Performance
<b>BWR 2 Safety in case of fire</b>		
EN 13501-1	Reaction to fire	B - s1, d0
EN 13501-2	Resistance to fire	Annex A
<b>BWR 3 Hygiene, health and environment</b>		
EN 1026	Air permeability	Annex B
EAD 350454-00-1104, Annex C	Water permeability	No performance determined
Declaration of manufacturer & EN 16516	Content, emission and/or release of dangerous substances	Use categories: IA1, S/W2 Declaration of manufacturer
<b>BWR 4 Safety in use</b>		
EOTA TR 001:2003	Mechanical resistance and stability	No performance determined
EOTA TR 001:2003	Resistance to impact/movement	No performance determined
EOTA TR 001:2003	Adhesion	No performance determined
EAD 350454-00-1104, Clause 2.2.9	Durability	Z <sub>2</sub>
<b>BWR 5 Protection against noise</b>		
EN 10140-1,2,4,5/ EN ISO 717-1	Airborne sound insulation*	No performance determined
<b>BWR 6 Energy economy and heat retention</b>		
EN 12664, EN 12667, EN 12939, EN ISO 8990, EN ISO 6946, EN ISO 14683, EN ISO 10211, EN ISO 10456	Thermal properties	No performance determined
EN ISO 12572, EN 12086, EN ISO 10456	Water vapour permeability	No performance determined

**4 ASSESSMENT AND VERIFICATION OF CONSTANCY OF PERFORMANCE (HEREINAFTER AVCP) SYSTEM APPLIED, WITH REFERENCE TO ITS LEGAL BASE**

According to the Statutory Instrument 2019 No. 465 – made 5<sup>th</sup> March 2019 and cited as the Construction Products (Amendment etc.) (EU Exit) Regulations 2019 and coming into force on exit day and Statutory Instrument 2020 No. 1359 – made 26<sup>th</sup> November 2020 and cited as the Construction Products (Amendment etc.) (EU Exit) Regulations 2020 and coming into force immediately before the 2019 Regulations come into force, on the procedure for attesting the conformity of construction products as regards fire stopping, fire sealing and fire protective products, published as ‘Pre-Exit’ European Assessment Documents, (see <https://www.gov.uk/guidance/pre-exit-european-assessment-documents-construction-products>), the system of assessment and verification of constancy of performance (see Annex V to Construction Products Regulation 2011 as amended by the Construction Products (Amendment etc.) (EU Exit) Regulations 2019 and the Construction Products (Amendment etc.) (EU Exit) Regulations 2020) given in the following table(s) apply.

<b>Product(s)</b>	<b>Intended use(s)</b>	<b>Level(s) or class(es)</b>	<b>System(s)</b>
Fire stopping and Fire Sealing Products	For fire compartmentation and/or fire protection or fire performance	Any	1

**5 Technical details necessary for the implementation of the AVCP system, as provided for in the applicable EAD**

**Tasks of the manufacturer:**

Factory production control

The manufacturer shall exercise permanent internal control of production. All the elements, requirements and provisions adopted by the manufacturer shall be documented in a systematic manner in the form of written policies and procedures, including records of results performed. This production control system shall ensure that the product is in conformity with this UK Technical Assessment.

The factory production control shall be in accordance with the Control Plan of FPC 25th June 2024 relating to the UK Technical Assessment 0843-UKTA-25/0025 issued on 28/11/2025 which is part of the technical documentation of this UK technical Assessment. The "Control Plan" is laid down in the context of the factory production control system operated by the manufacturer and deposited at UL International (UK) Ltd.

The results of factory production control shall be recorded and evaluated in accordance with the provisions of the Control Plan.

**Other tasks of the manufacturer:**

Additional information

The manufacturer shall provide a technical data sheet and an installation instruction with the following minimum information:

(a) Technical data sheet:

- Field of application
- Building elements for which the penetration seal is suitable, type and properties of the building elements like minimum thickness, density, and - in case of lightweight constructions – the construction requirements
- Limits in size, minimum thickness etc. of the penetration seal
- Construction of the penetration seal including the necessary components and additional products (e.g. backfilling material) with clear indication whether they are generic or specific
- Services which the penetration seal is suitable, type and properties of the services like material, diameter, thickness etc. in case of pipes including insulation materials; necessary/allowed supports/fixings (e.g. pipe trays)

(b) Installation instruction:

- Steps to be followed
- Procedure in case of retrofitting
- Stipulations on maintenance, repair and replacement

**6 Issued on:**

**28<sup>th</sup> November 2025**

Report by:



P. Foster  
Project Engineer Associate  
Built Environment

Reviewed by:



D. Forshaw  
Staff Engineer  
Built Environment

**For and on behalf of UL International (UK) Ltd.**

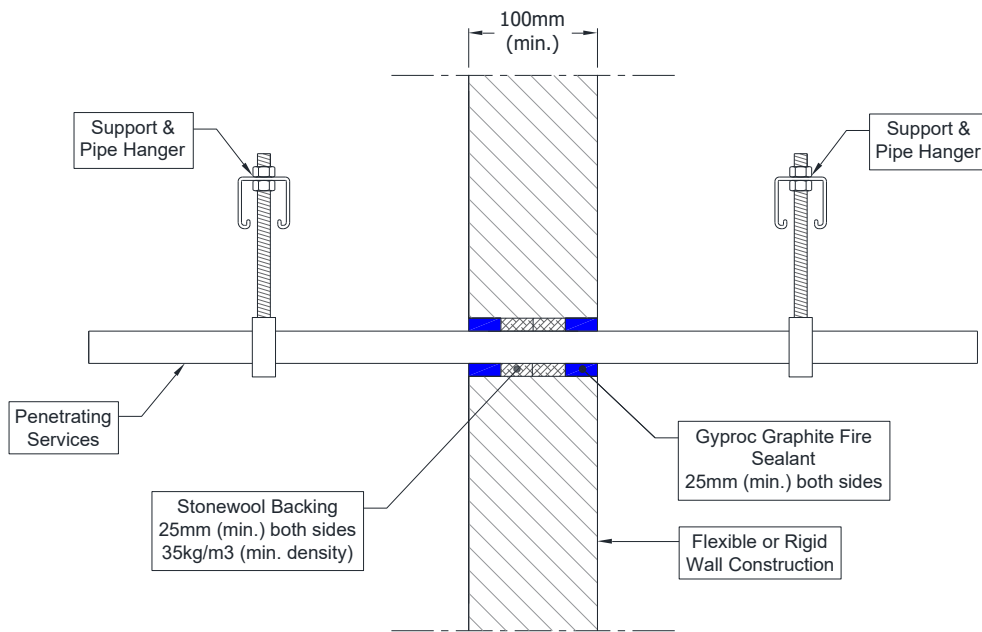
# ANNEX A – Resistance to Fire Classification – Gyproc Graphite Fire Sealant

## A.1 Flexible or rigid wall constructions with wall thickness of minimum 100 mm

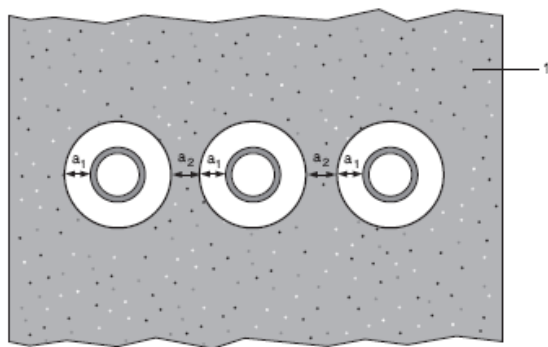
### A.1.1 Penetration seals, in drywalls\* and concrete/masonry walls

**Penetration Seal:** Combustible pipes sealed with Gyproc Graphite Fire Sealant, minimum 25 mm deep to both sides of the wall backed with Stone wool (minimum 35 kg/m<sup>3</sup> density), minimum 25 mm deep. Minimum separation between penetration seals of 30 mm (a<sub>2</sub>).

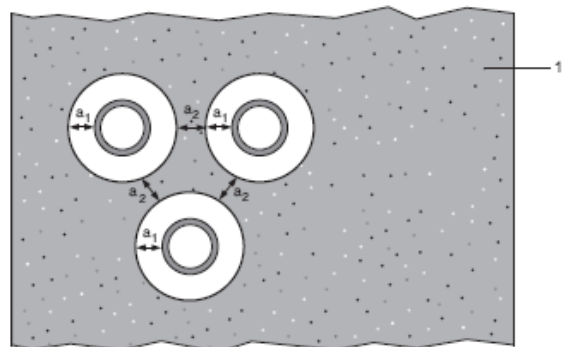
Construction details:



Configuration 1:



Configuration 2:



**Key**

1 Supporting construction

a<sub>1</sub> Pipe / edge of seal separation (annular space)

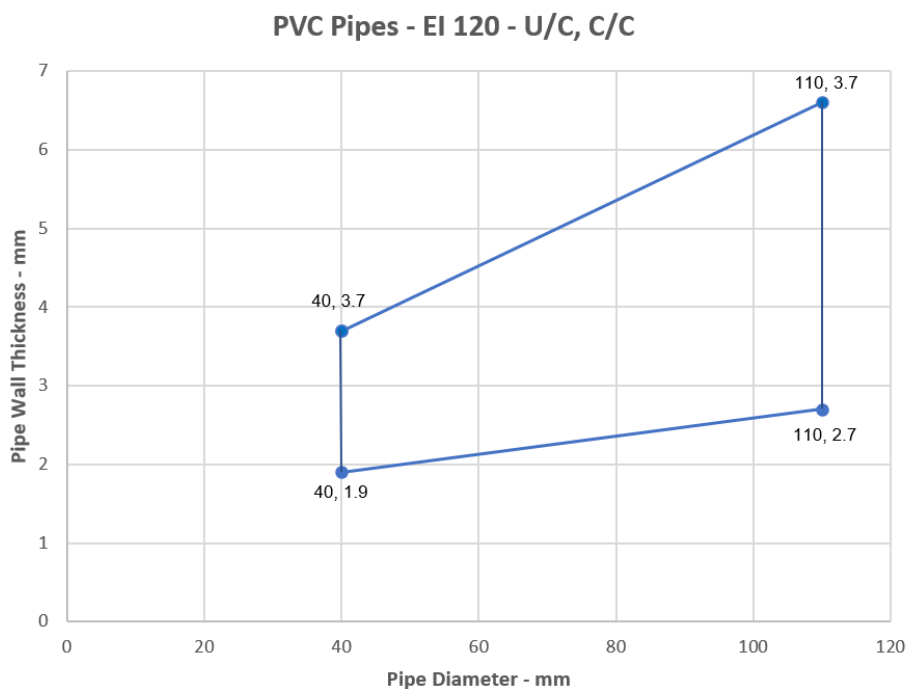
a<sub>2</sub> Separation between penetration seals

\* Partition wall must incorporate a core insulation as support for the backing material.

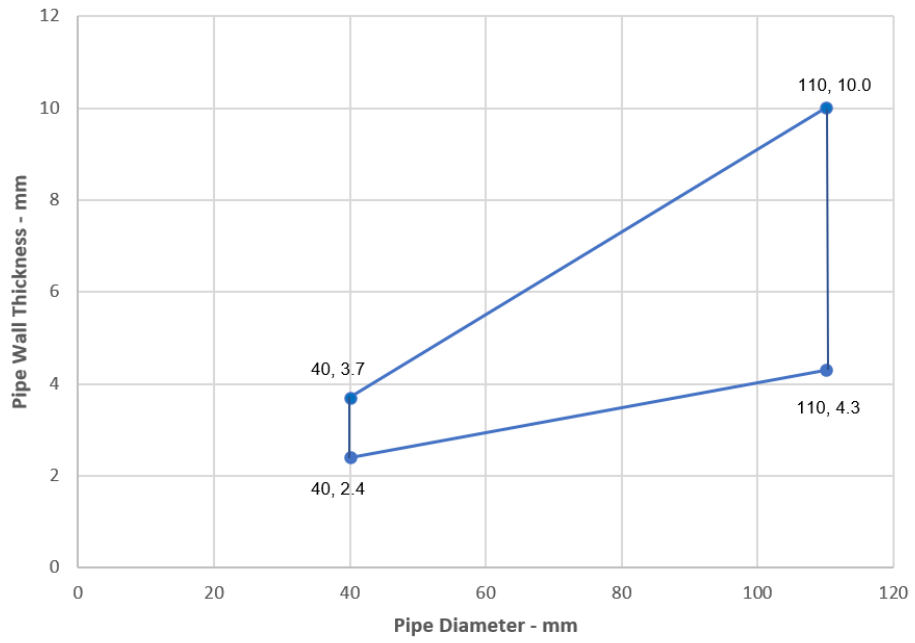
### A.1.1.1

Services	Seal & Backing width (a1)	Permitted configuration for seal separation	Classification
PVC-U pipe according to EN 1329-1, EN 1452-2 and EN 1453-1, PVC-C according to EN 1566-1			
Diameter 40 mm, wall thickness 1.9 – 3.7 mm to diameter 110 mm, wall thickness 2.7-6.6 mm *	10-30 mm	1 & 2	EI 120 U/C, EI 120 C/C
PE pipe according to EN 1519-1, EN 12201-2 and EN 12006-1, ABS according to EN 1455-1 and pipes made from SAN+PVC according to EN 1565-1			
Diameter 40 mm, wall thickness 2.4-3.7 mm	10-30 mm	1 & 2	EI 120 U/C, EI 120 C/C
Diameter 40, wall thickness 2.4-3.7 mm to diameter 110 mm, wall thickness 4.3-10 mm *		1 & 2	EI 60 U/C, EI 60 C/C
Diameter 110 mm, wall thickness 4.3-10 mm		1	E 120 U/C, E 120 C/C EI 90 U/C, EI 90 C/C
PP pipe according to EN 1852-1: 2009 or DIN8077/8078			
Diameter 110 mm, wall thickness 6.6 mm	30 mm	1 & 2	EI 120 U/C, EI 120 C/C
Diameter 40 mm, wall thickness 1.8 -5.5 mm	10 mm	1 & 2	EI 90 U/C

\*See below graph for interpolation pipe sizes



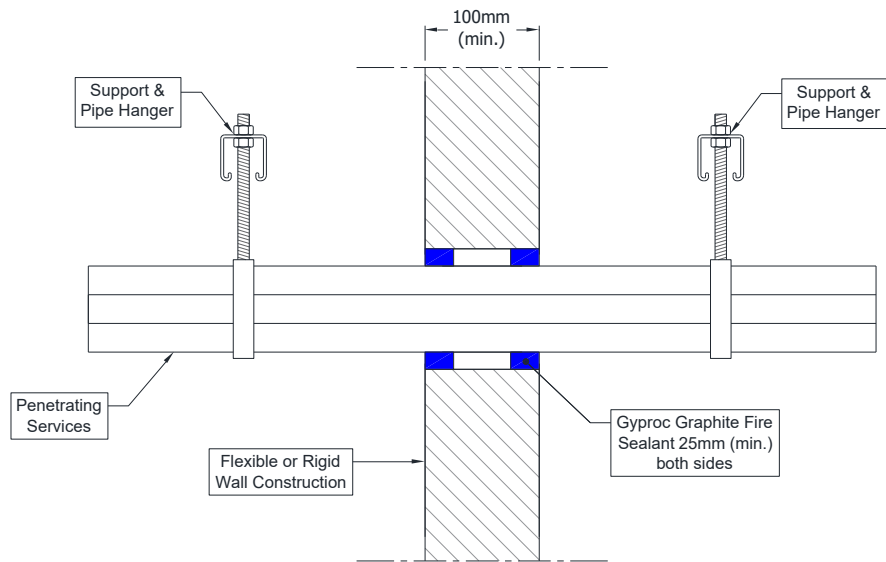
### PE Pipes - EI 60 - U/C, C/C



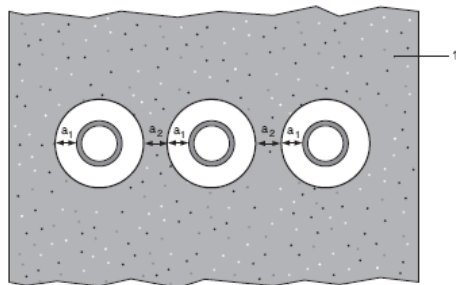
**A.1.2 Penetration seals with no backing material, in drywalls and concrete/masonry walls**

**Penetration Seal:** Combustible cable conduit or combustible pipes sealed with Gyproc Graphite Fire Sealant, minimum 25 mm deep to both sides of the wall without backing material. Minimum separation between penetration seals of 30 mm (a2).

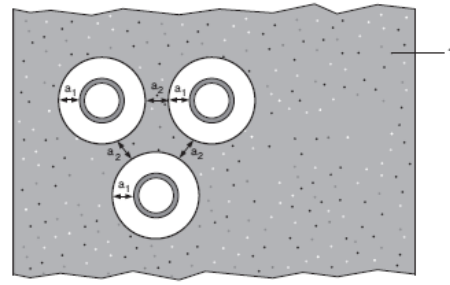
Construction details:



Configuration 1:



Configuration 2:



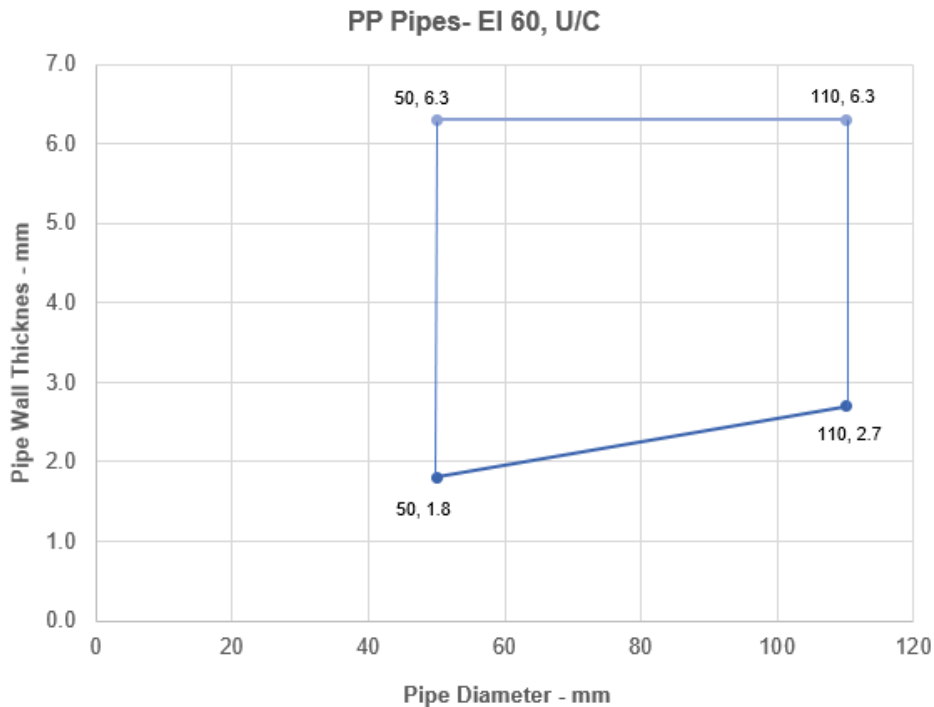
**Key**

- 1 Supporting construction
- a1 Pipe / edge of seal separation (annular space)
- a2 Separation between penetration seals

**A.1.2.1**

Services	Seal width (a1)	Permitted configuration for seal separation	Classification
PVC-U pipe according to EN 1329-1, EN 1452-2 and EN 1453-1, PVC-C according to EN 1566-1 or PP pipe according to EN 1852-1: 2009 or DIN8077/8078			
Maximum diameter 110 mm, wall thickness 1.9-6.6 mm for PVC pipes, fully or partially filled conduits with cables up to 20 mm diameter	10-30 mm	1 & 2	<b>EI 90 U/C</b>
Maximum diameter 110 mm, wall thickness 2.7-6.6 mm for PP pipes, fully or partially filled conduits with cables up to 20 mm diameter	10-30 mm	1 & 2	<b>EI 90 U/C</b>
PE pipe according to EN 1519-1, EN 12201-2 and EN 12006-1, ABS according to EN 1455-1 and pipes made from SAN+PVC according to EN 1565-1			
Maximum diameter 110 mm, wall thickness 2.4-10 mm, fully or partially filled conduits with cables up to 20 mm conduit	10-30 mm	1 & 2	<b>EI 60 U/C</b>
PVC-U pipe according to EN 1329-1, EN 1452-2 and EN 1453-1, PVC-C according to EN 1566-1			
Maximum 160 mm diameter, wall thickness 3.2-9.5 mm	10-30 mm	1 & 2	<b>EI 30 U/C</b>
Maximum 160 mm diameter, wall thickness 9.5 mm	10-30 mm	1 & 2	<b>EI 90 U/C</b>
PP pipe according to EN 1852-1: 2009 or DIN8077/8078			
Maximum 110 mm, wall thickness 2.7 mm	10-30 mm	1 & 2	<b>EI 60 C/C</b>
Maximum 110 mm*	10-30 mm	1 & 2	<b>EI 60 U/C</b>

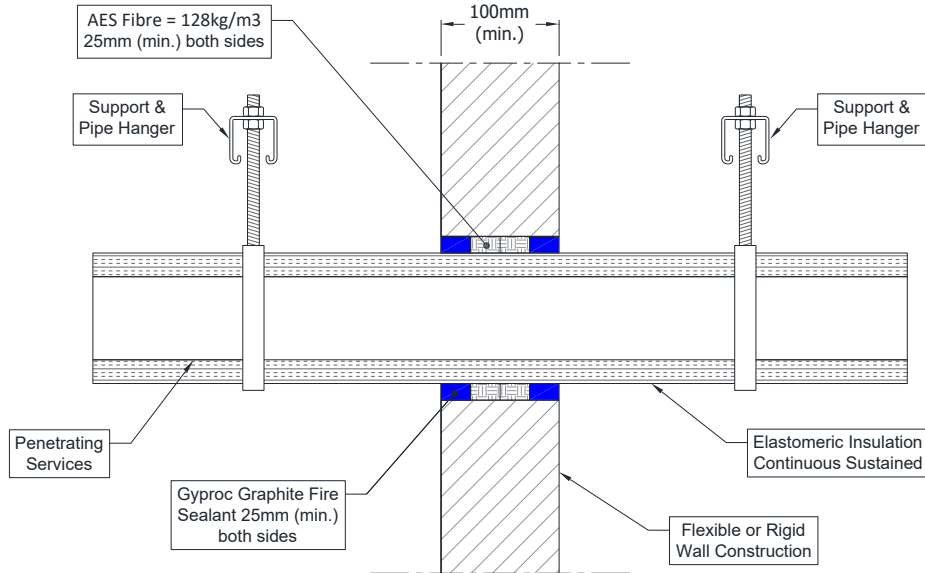
\*See below graph for interpolation pipe sizes



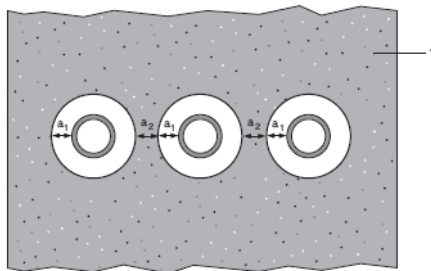
### A.1.3 Penetration seals in drywalls and concrete/masonry walls

**Penetration Seal:** Metallic pipes insulated with Elastomeric insulation, Continuous Sustained (CS), sealed with Gyproc Graphite Fire Sealant, minimum 25 mm deep to both sides of the wall backed with AES Fibre  $\geq 128 \text{ kg/m}^3$ , minimum 25 mm deep. Minimum separation between penetration seals of 30 mm (a2).

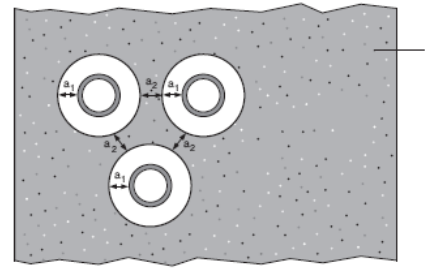
Construction details:



Configuration 1:



Configuration 2:



**Key**

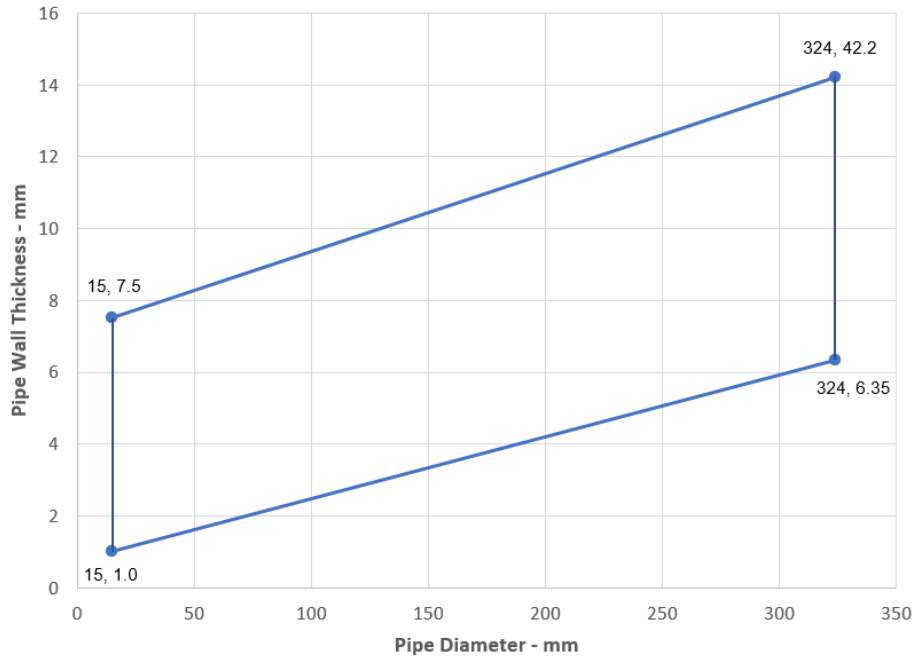
- 1 Supporting construction
- a1: Pipe / edge of seal separation (annular space)
- a2 Separation between penetration seals

#### A.1.3.1

Services	Seal & backing material width (a1)	Permitted configuration for seal separation	Insulation CS	Classification
Mild or stainless steel pipe, with Elastomeric insulation minimum class B-s3, d0				
Maximum 15 mm diameter, wall thickness minimum 1.0 mm	10 mm	1 & 2	25-50 mm Elastomeric insulation minimum class B-s3, d0	60 C/C
Maximum 324 mm diameter, wall thickness 1.0-14.2 mm*	10 mm	1 & 2	50 mm Elastomeric insulation minimum class B-s3, d0	EI 60 C/U

\*See below graph for interpolation pipe sizes

### Insulated Steel Pipes - EI 60 - C/U

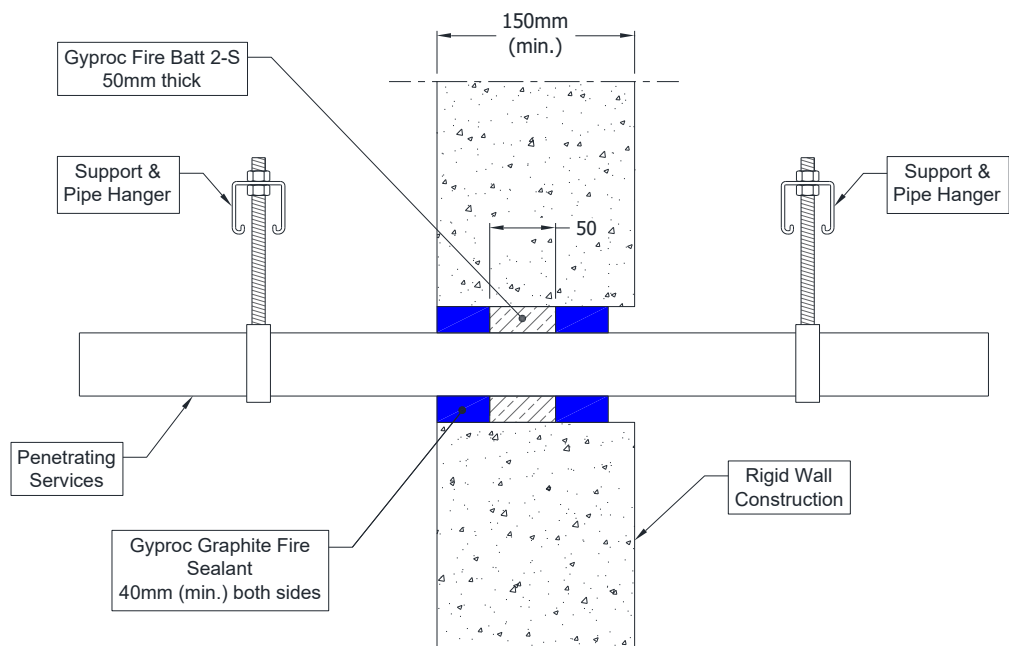


## A.2 Rigid walls constructions with wall thickness of minimum 150 mm

### A.2.1 Penetration seals for pipes, in concrete/masonry walls

**Penetration Seal:** Combustible pipes sealed with minimum 40 mm deep Gyproc Graphite Fire Sealant, to both sides of the wall backed with Gyproc Fire Batt 2S, 50 mm thick. Minimum separation between penetration seals of 30 mm.

Construction details:



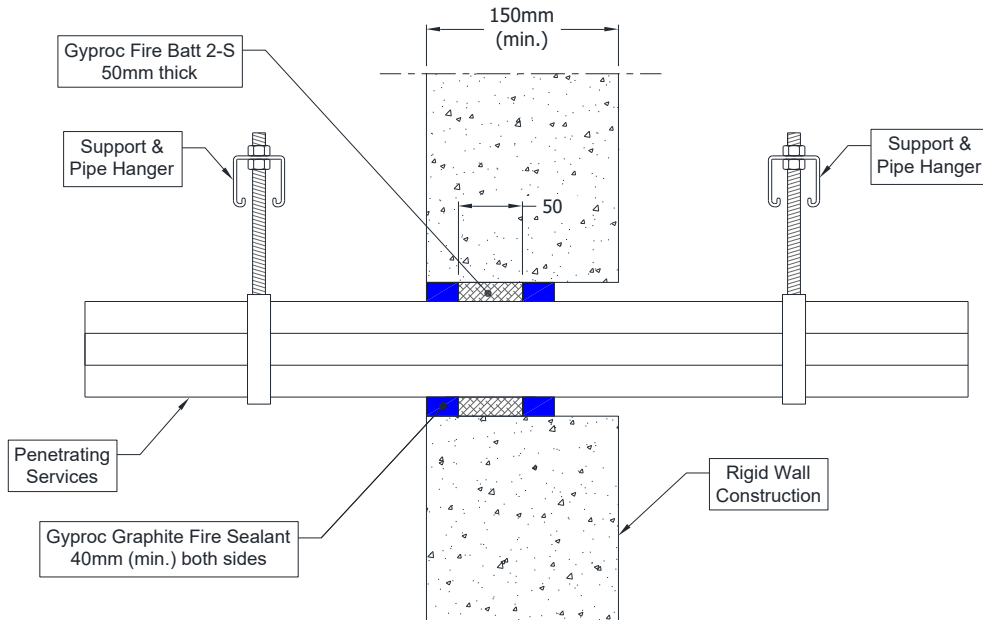
#### A.2.1.1

Services	Seal & Backing width	Classification
PVC-U pipe according to EN 1329-1, EN 1452-2 and EN 1453-1, PVC-C according to EN 1566-1		<b>EI 240 U/C, EI 240 C/C</b>
Diameter 48 mm, wall thickness 3.2 mm	17 mm	
Diameter 68 mm, wall thickness 2 mm	41 mm	
Diameter 110 mm, wall thickness 3.5 mm	22 mm	
PE pipe according to EN 1519-1, EN 12201-2 and EN 12006-1, ABS according to EN 1455-1 and pipes made from SAN+PVC according to EN 1565-1		<b>EI 240 U/C, EI 240 C/C</b>
Diameter 32 mm, wall thickness 3.2 mm	25 mm	
ABS pipe according to EN 1455-1		
Diameter 36 mm, wall thickness 2.3 mm	23 mm	<b>EI 240 U/C, EI 240 C/C</b>
Diameter 110 mm, wall thickness 3.5 mm	26 mm	

## A.2.2 Penetration seals for cables, in concrete/masonry walls

**Penetration Seal:** Cables sealed with minimum 40 mm deep Gyproc Graphite Fire Sealant, to both sides of the wall backed with Gyproc Fire Batt 2S, 50 mm thick. Minimum separation between penetration seals of 30 mm.

Construction details:



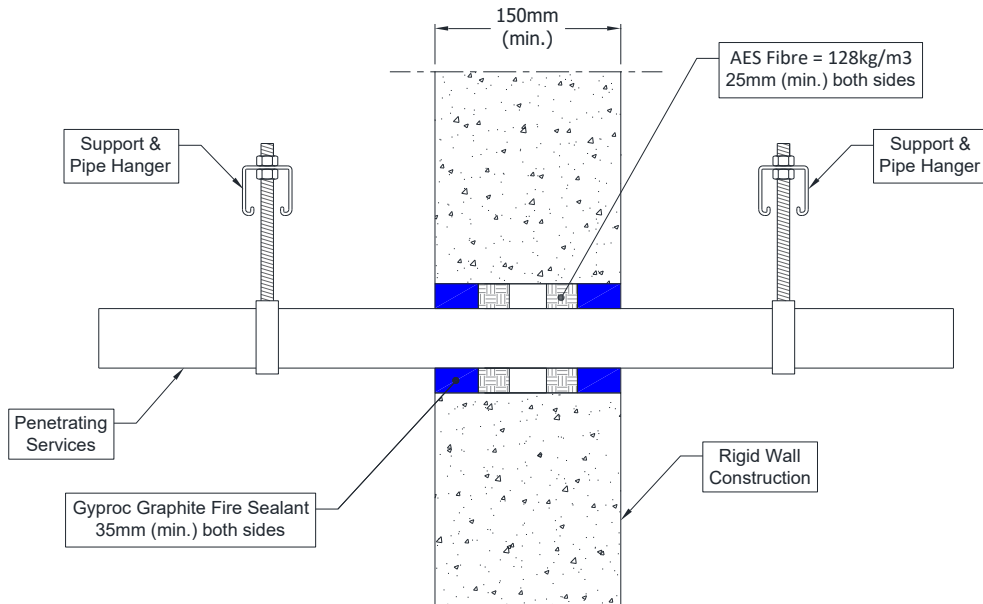
### A.2.2.1

Services	Seal size (WxH or diameter)	Classification
150 x 25 mm perforated steel cable tray	Maximum 200 x 100 mm	<b>E 240, EI 180</b>
20 mm diameter, single copper core armoured cable		
Twin/earth cable		
Ø 100 mm bundle of up to 4 no. 20mm diameter, single copper core armoured cable and 12 no. twin/earth cables	Maximum 150 mm Ø	<b>E240, EI 60</b>

### A.2.3 Penetration seals for pipes, in concrete/masonry walls

**Penetration Seal:** Combustible pipes sealed with minimum 35 mm deep Gyproc Graphite Fire Sealant, to both sides of the wall backed with AES Fibre  $\geq 128 \text{ kg/m}^3$  backing material, minimum 25 mm thick. Minimum separation between penetration seals of 30 mm.

Construction details:



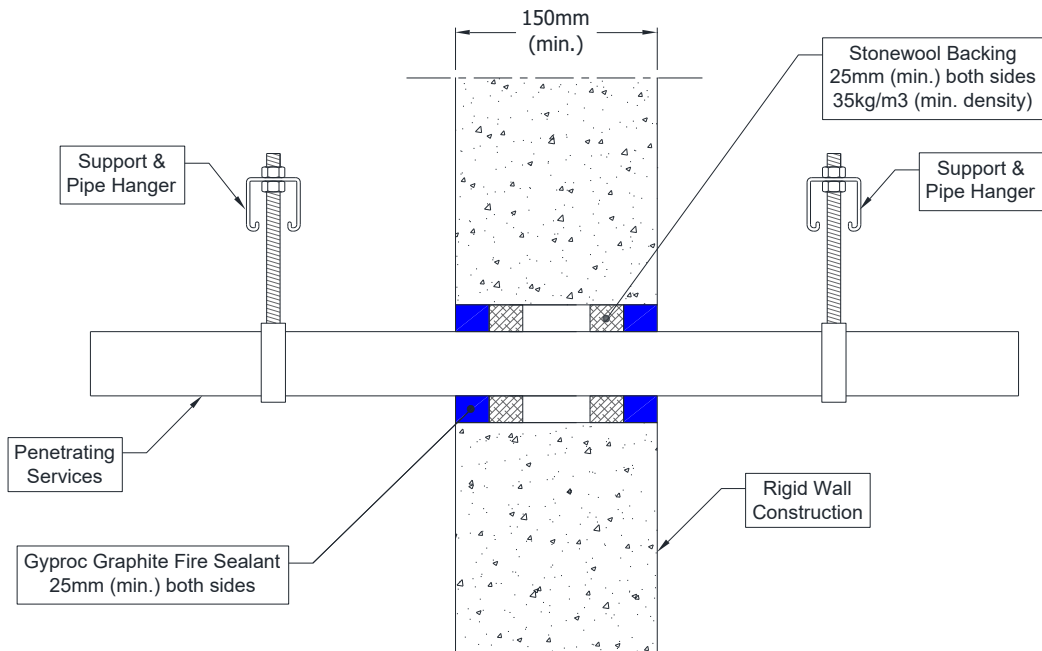
#### A.2.3.1

Services	Seal & Backing width (a1)	Classification
PVC-U pipe according to EN 1329-1, EN 1452-2 and EN 1453-1, PVC-C according to EN 1566-1		
Maximum 160 mm diameter, wall thickness 4.0-9.5 mm	10-30 mm	EI 90 U/C
Maximum 160 mm diameter, wall thickness 9.5 mm	10-30 mm	E 240, EI 180 U/C
PE pipe according to EN 1519-1, EN 12201-2 and EN 12006-1, ABS according to EN 1455-1 and pipes made from SAN+PVC according to EN 1565-1		
Maximum 160 mm diameter, wall thickness 4.9-9.5mm	10-30 mm	EI 30 U/C
PP pipe according to EN 1852-1: 2009 or DIN8077/8078		
Maximum 160 mm diameter, wall thickness 6.2-9.1 mm	10 mm	EI 30 U/C

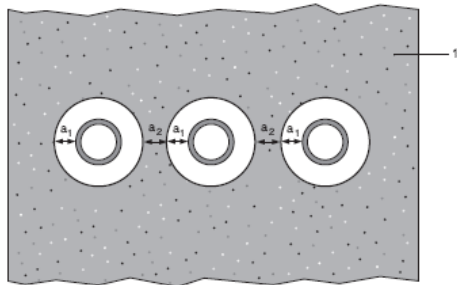
### A.2.4 Penetration seals for pipes, in concrete/masonry walls

**Penetration Seal:** Combustible pipes sealed with minimum 25 mm deep Gyproc Graphite Fire Sealant, to both sides of the wall backed with Stone wool (minimum 35 kg/m<sup>3</sup> density), minimum 25 mm deep. Minimum separation between penetration seals of 30 mm (a2).

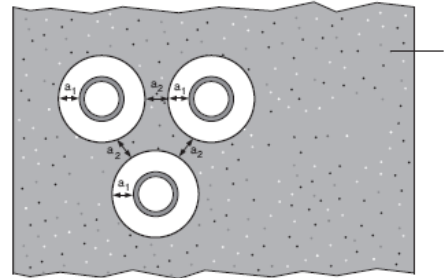
Construction details:



Configuration 1:



Configuration 2:



**Key**

- 1 Supporting construction
- a1 Pipe / edge of seal separation (annular space)
- a2 Separation between penetration seals

#### A.2.4.1

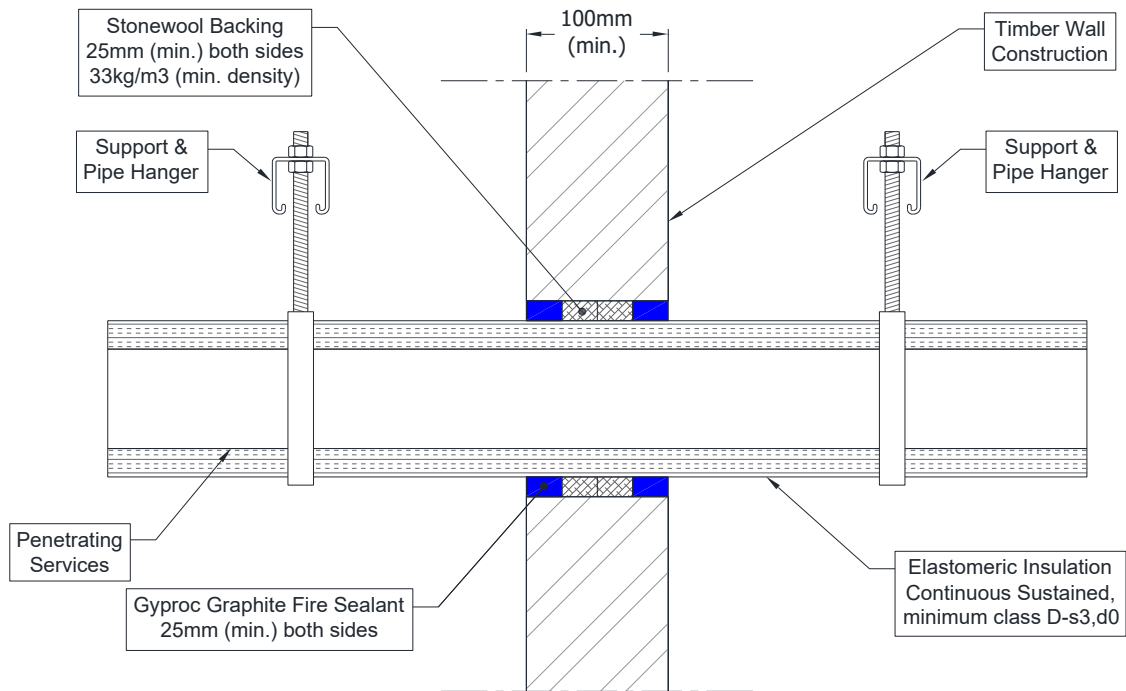
Services	Seal width (a1)	Permitted configuration for seal separation	Classification
PVC pipe			
Diameter 40 mm, wall thickness 1.9 – 3.7 mm to diameter 110 mm, wall thickness 2.7-6.6 mm, partially or fully filled conduits with cables up to 20 mm diameter	10-30 mm	1 & 2	<b>EI 120 U/C</b>
Diameter 110 mm, wall thickness 6.6 mm, fully filled conduits with cables up to 20 mm diameter	10 mm	1 & 2	<b>EI 240 U/C</b>
PE pipe			
Diameter 110 mm, wall thickness 4.2 mm, fully filled conduits with cables up to 20 mm diameter	10 mm	1 & 2	<b>EI 120 U/C</b>
PP pipe			
Diameter 110 mm, wall thickness 3.4 mm, fully filled conduits with cables up to 20 mm diameter	10 mm	1 & 2	<b>EI 120 U/C</b>

### A.3 Timber wall constructions with wall thickness of minimum 100 mm

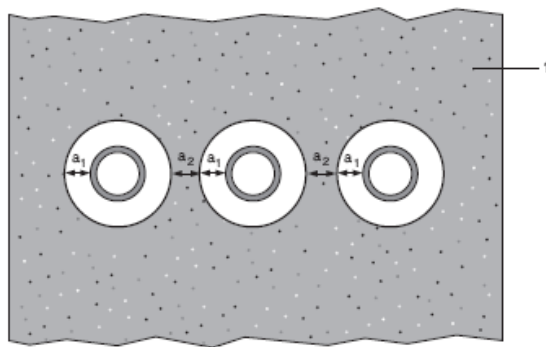
#### A.3.1 Pipe penetration seals, in timber walls

**Penetration Seal:** Metallic pipes insulated with Elastomeric insulation minimum class D-s3,d0, Continuous Sustained (CS), sealed with Gyproc Graphite Fire Sealant, minimum 25 mm deep to both sides of the wall and backed with Stone wool (minimum 33 kg/m<sup>3</sup> density), minimum 25 mm deep. Minimum separation between penetration seals of 30 mm (a<sub>2</sub>).

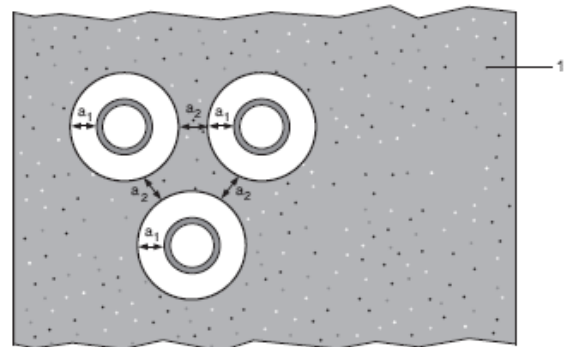
Construction details:



Configuration 1:



Configuration 2:



**Key**

1 Supporting construction

a<sub>1</sub> Pipe / edge of seal separation (annular space)

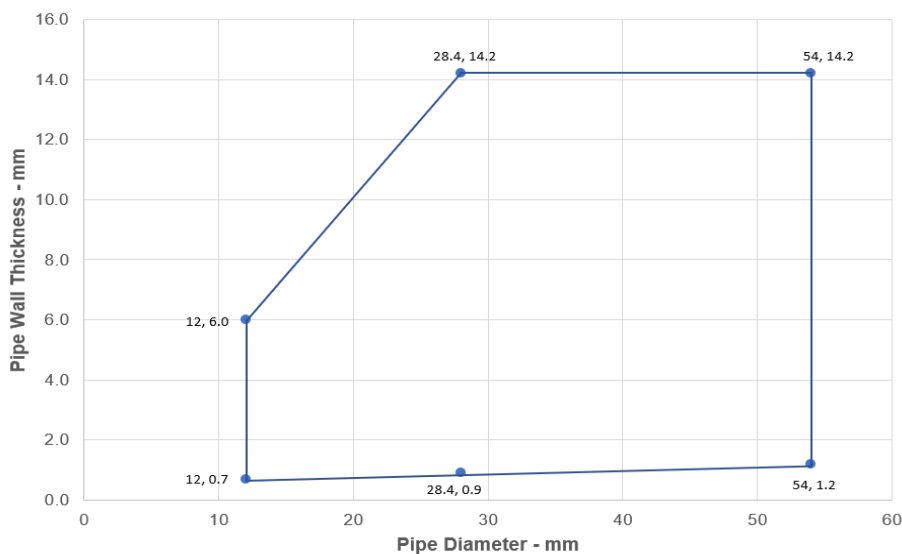
a<sub>2</sub> Separation between penetration seals

**A.3.1.1**

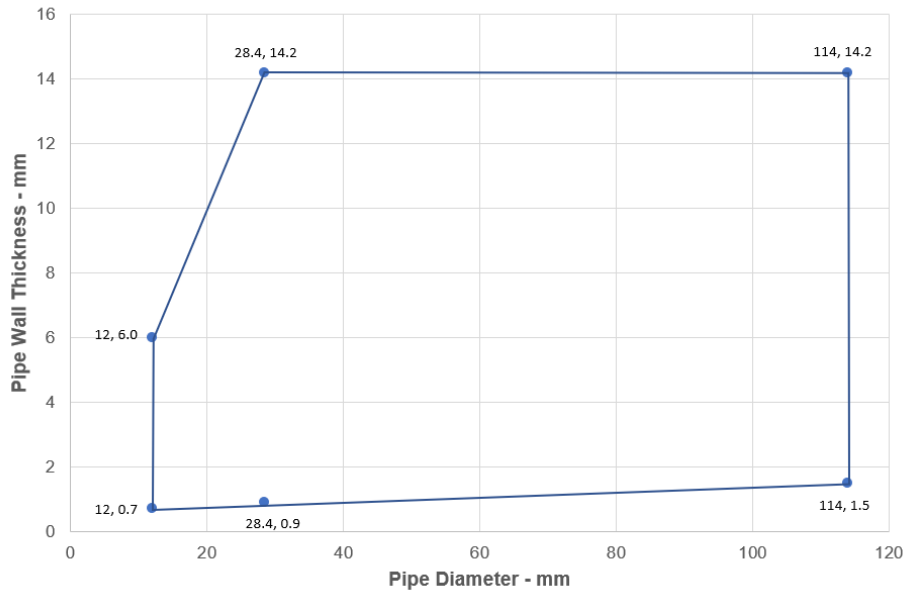
Services	Seal & backing material width (a1)	Permitted configuration for seal separation	Insulation CS	Classification
<b>Copper, mild or stainless steel pipe</b>				
Diameter 12 mm, wall thickness 0.7 mm	10 mm	1	13 mm Elastomeric insulation minimum class D-s3, d0	EI 120 C/C
Diameter 12-54 mm, wall thickness*				E 120 C/C, EI 90 C/C
Diameter 12-54 mm, wall thickness*			14-25 mm Elastomeric insulation minimum class D -s3, d0	E 120 C/C, EI 30 C/C
<b>Mild or stainless steel pipe, with Elastomeric insulation minimum class D-s3, d0</b>				
Diameter 12-114 mm, wall thickness*	10 mm	1	13 mm Elastomeric insulation minimum class D -s3, d0	EI 90 C/C
Diameter 12-114 mm, wall thickness*			14-25 mm Elastomeric insulation minimum class D-s3, d0	E 90 C/C, EI 45 C/C
Diameter 114 mm, wall thickness 1.5-14.2 mm			13 mm Elastomeric insulation minimum class D-s3, d0	EI 90 C/U
Diameter 114 mm, wall thickness 1.5-14.2 mm			13-25 mm Elastomeric insulation minimum class D-s3, d0	E 90 C/U, EI 45 C/U
<b>Alupex pipe, with Elastomeric insulation minimum class D-s3, d0</b>				
Diameter 16 mm, wall thickness 2.25 mm	10 mm	1	13 mm Elastomeric insulation minimum class D-s3, d0	EI 120 C/C
Diameter 16-75 mm, wall thickness*				E 120 C/C, EI 45 C/C
Diameter 16-75 mm, wall thickness*			14-24 mm Elastomeric insulation minimum class D-s3, d0	E 90 C/C, EI 45 C/C
Diameter 16-75 mm, wall thickness*			25 mm Elastomeric insulation minimum class D -s3, d0	EI 90 C/C

\*See below graph for interpolation pipe sizes

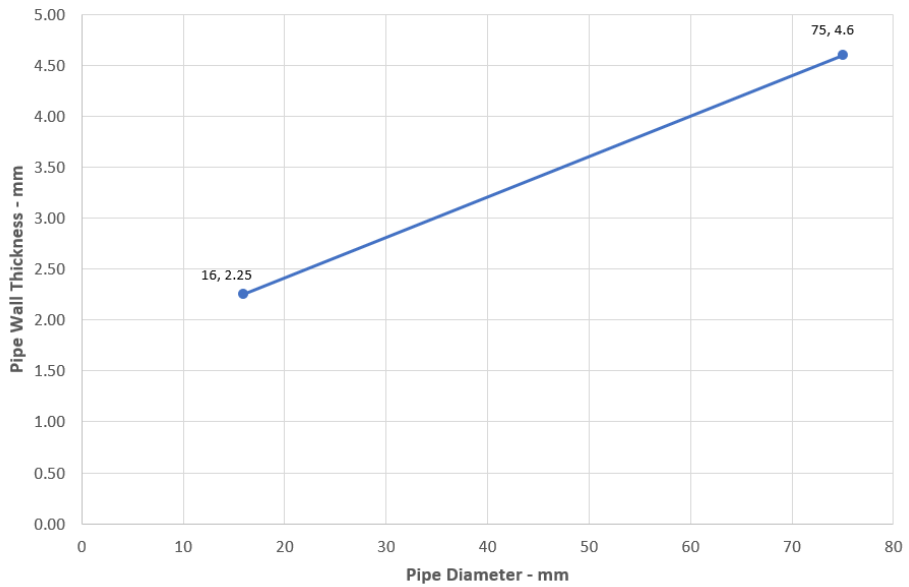
**Copper or Steel Pipes with Elastomeric Insulation - C/C**



### Steel Pipes with Elastomeric Insulation - C/C



### Alupex Pipes with Elastomeric Insulation - C/C

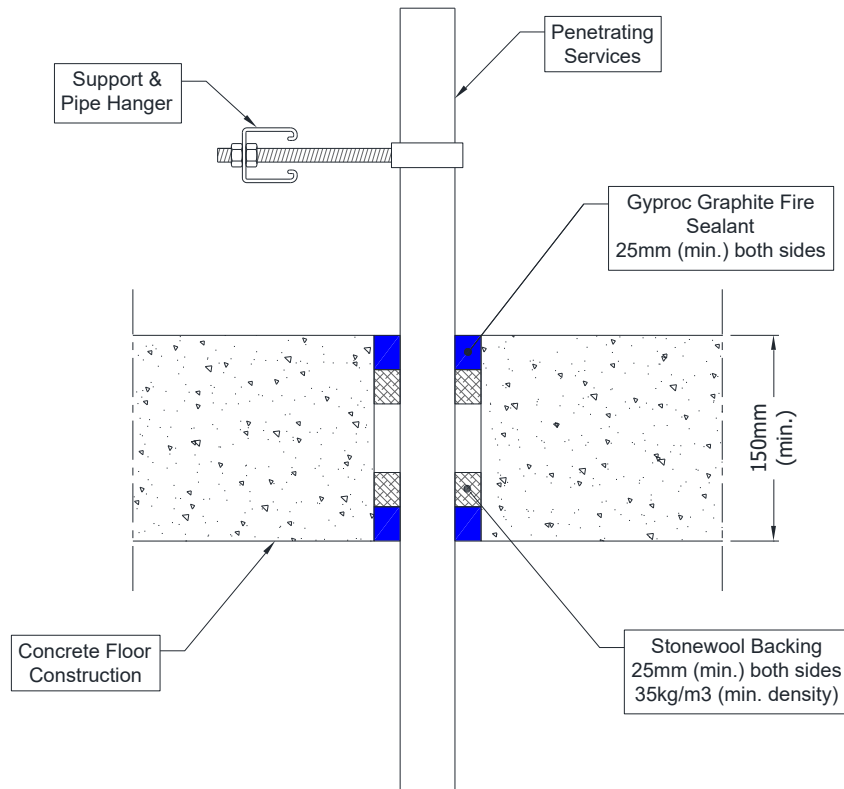


## A.4 Rigid floor constructions with floor thickness of minimum 150 mm

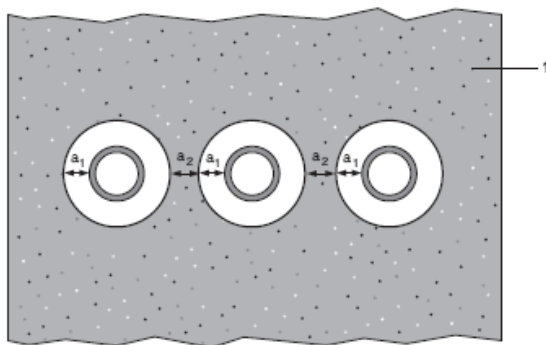
### A.4.1 Penetration seals, surface mounted in concrete floors

**Penetration Seal:** Combustible pipes sealed with Gyproc Graphite Fire Sealant, to both sides of the floor backed with Stone wool (minimum 35 kg/m<sup>3</sup> density), minimum 25 mm deep. Minimum separation between penetration seals of 30 mm.

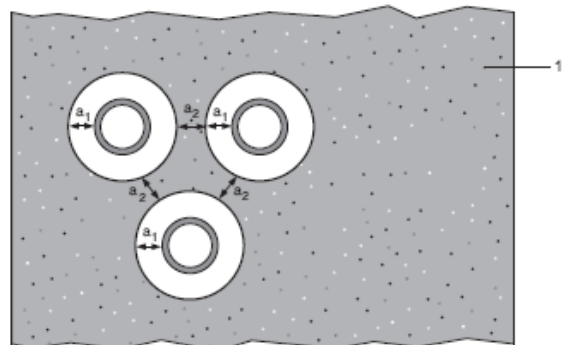
Construction details:



Configuration 1:



Configuration 2:



**Key**

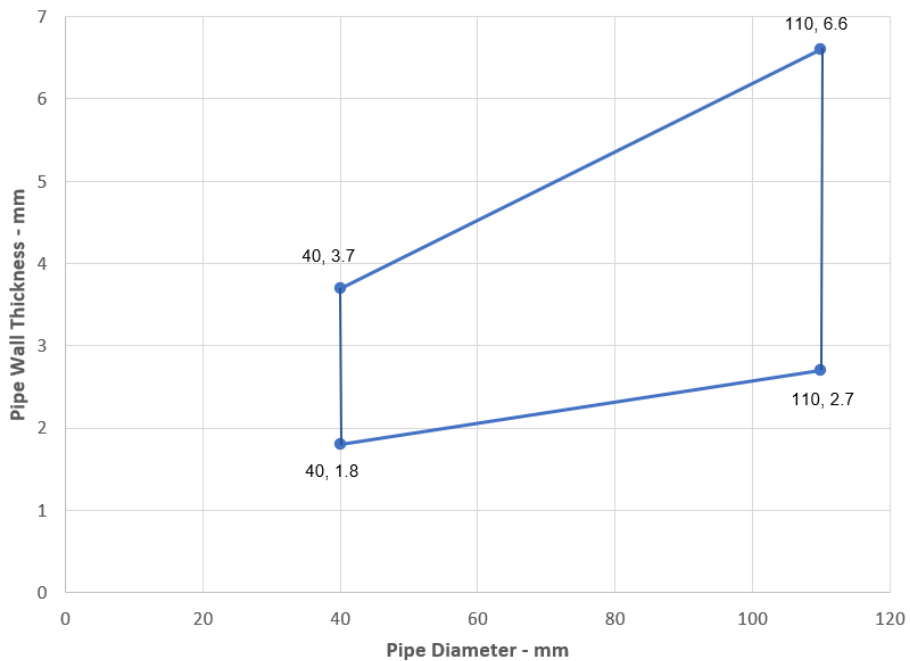
- 1 Supporting construction
- a<sub>1</sub> Pipe / edge of seal separation (annular space)
- a<sub>2</sub> Separation between penetration seals

### A.4.1.1

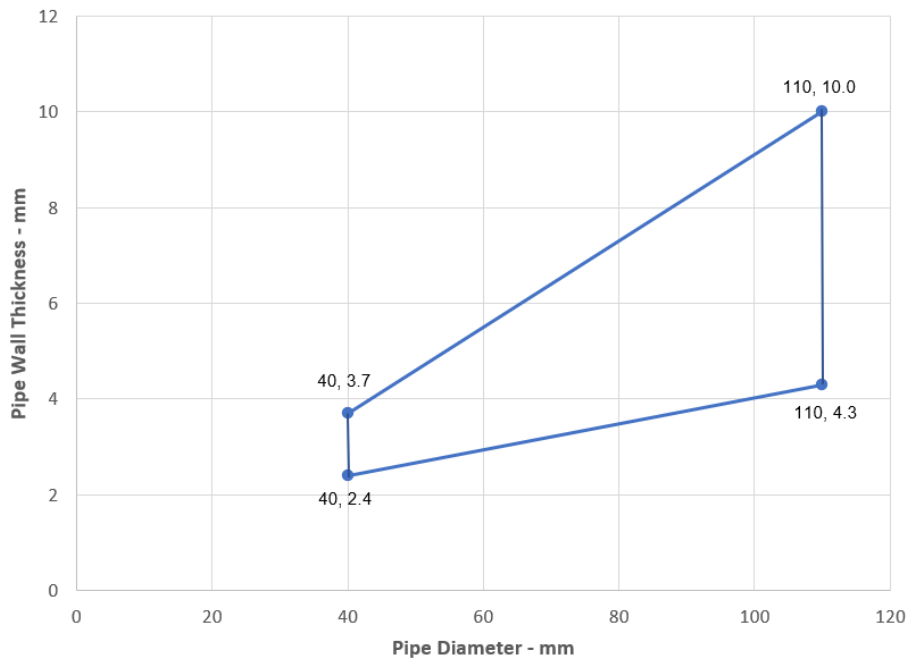
Services	Seal & Backing width	Permitted configuration for seal separation	Classification
PVC-U pipe according to EN 1329-1, EN 1452-2 and EN 1453-1, PVC-C according to EN 1566-1			
Diameter 40 mm, wall thickness 1.8 – 3.7 mm	10-30 mm	1 & 2	EI 240 U/U, EI 240 C/U, EI 240 U/C, EI 240 C/C
Diameter 40 mm, wall thickness 1.8 – 3.7 mm to diameter 110 mm, wall thickness 2.7-6.6 mm *		1 & 2	EI 90 C/U, EI 90 C/C
PE pipe according to EN 1519-1, EN 12201-2 and EN 12006-1, ABS according to EN 1455-1 and pipes made from SAN+PVC according to EN 1565-1			
Diameter 40 mm, wall thickness 2.4-3.7 mm	10-30 mm	1 & 2	EI 60 U/U, EI 60 C/U, EI 60 U/C, EI 60 C/C
			EI 240 U/C, EI 240 C/C
Diameter 40, wall thickness 2.4-3.7 mm to diameter 110 mm, wall thickness 4.3-10 mm *		1 & 2	EI 60 U/C, EI 60 C/C
Diameter 110 mm, wall thickness 4.3-10 mm		1 & 2	EI 90 U/C, EI 90 C/C
Diameter 110 mm, wall thickness 10 mm	EI 60 U/U, EI 60 C/U, EI 60 U/C, EI 60 C/C		

\*See below graph for interpolation pipe sizes

PVC Pipes - EI 90 - C/U, C/C



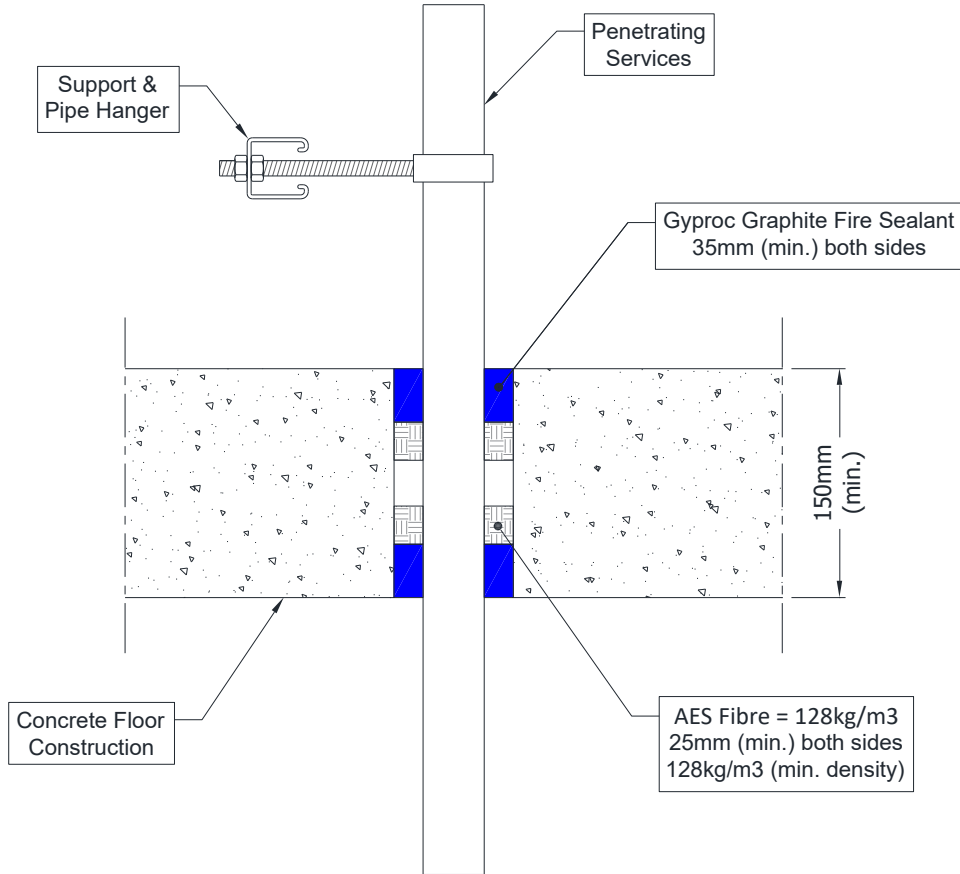
### PVC Pipes - EI 90 - C/U, C/C



#### A.4.2 Penetration seals, surface mounted in concrete floors

**Penetration Seal:** Combustible pipes sealed with Gyproc Graphite Fire Sealant, minimum 35 mm deep to both sides of the floor backed with AES Fibre (128 kg/m<sup>3</sup> density), minimum 25 mm deep. Minimum separation between penetration seals of 30 mm.

Construction details:



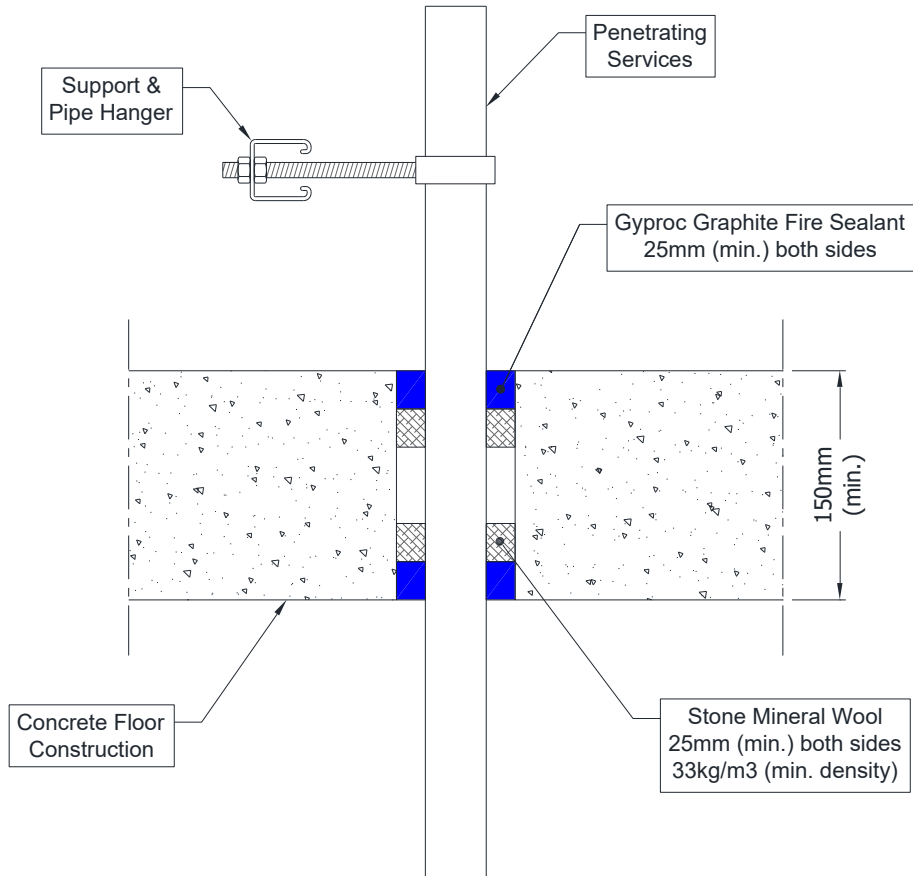
##### A.4.2.1

Services	Seal & Backing width (a1)	Classification
PVC-U pipe according to EN 1329-1, EN 1452-2 and EN 1453-1, PVC-C according to EN 1566-1		
Maximum 160 mm diameter, wall thickness 4.0-9.5 mm	10-30 mm	EI 60 U/C
PE pipe according to EN 1519-1, EN 12201-2 and EN 12006-1, ABS according to EN 1455-1 and pipes made from SAN+PVC according to EN 1565-1		
Maximum 160 mm diameter, wall thickness 4.9-14.6 mm	10-30 mm	EI 30 U/C
Maximum 160 mm diameter, wall thickness 14.6 mm	10-30 mm	EI 60 U/C

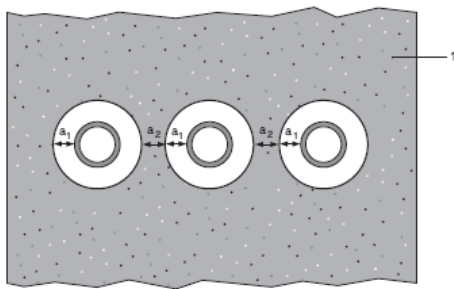
### A.4.3 Penetration seals, surfaces mounted in concrete floors

**Penetration Seal:** Combustible pipes sealed with Gyproc Graphite Fire Sealant, minimum 25 mm deep to both sides of the floor backed with stone mineral wool (minimum 33 kg/m<sup>3</sup> density), minimum 25 mm deep. Minimum separation between penetration seals of 30 mm (a2).

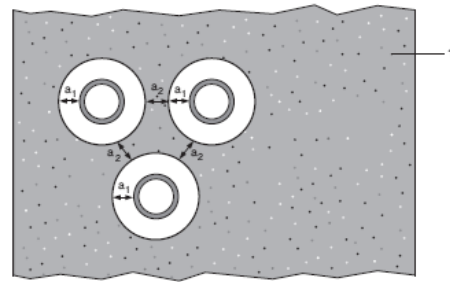
Construction details:



Configuration 1:



Configuration 2:



**Key**

- 1 Supporting construction
- a1 Pipe / edge of seal separation (annular space)
- a2 Separation between penetration seals

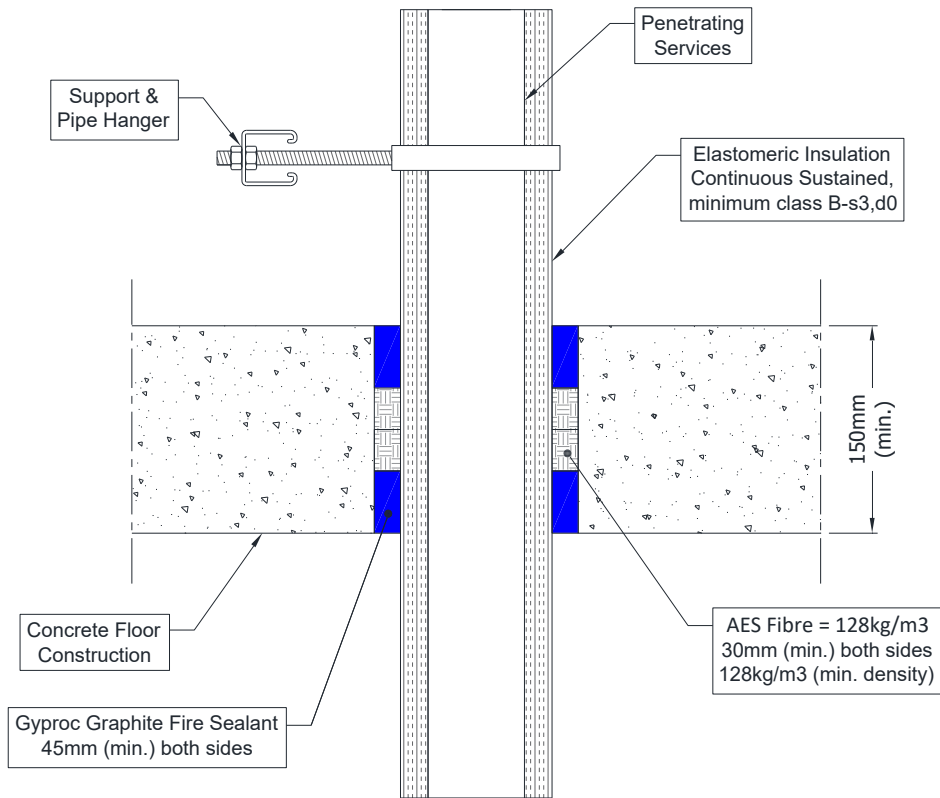
### A.4.3.1

Services	Seal width (a1)	Permitted configuration for seal separation	Classification
PVC-U pipe according to EN 1329-1, EN 1452-2 and EN 1453-1, PVC-C according to EN 1566-1 or PP pipe according to EN 1852-1: 2009 or DIN8077/8078			
Maximum diameter 110 mm, wall thickness 1.8-6.6 mm for PVC pipes, fully or partially filled conduits with cables up to 20 mm diameter	10-30 mm	1 & 2	<b>EI 90 U/C</b>
Maximum diameter 110 mm, wall thickness 2.7 mm for PP pipes, fully or partially filled conduits with cables up to 20 mm diameter	10-30 mm	1 & 2	<b>EI 90 U/C</b>
Maximum diameter 110 mm, wall thickness 1.8-6.3 mm for PP pipes, fully or partially filled conduits with cables up to 20 mm diameter	10-30 mm	1 & 2	<b>EI 30 U/C</b>
PE pipe according to EN 1519-1, EN 12201-2 and EN 12006-1, ABS according to EN 1455-1 and pipes made from SAN+PVC according to EN 1565-1			
Maximum diameter 110 mm, wall thickness 2.4-10 mm, fully or partially filled conduits with cables up to 20 mm diameter	10-30 mm	1 & 2	<b>EI 60 U/C</b>
PP pipe according to EN 1852-1: 2009 or DIN8077/8078			
Maximum 40 mm diameter, wall thickness 1.8 mm	10-30 mm	1 & 2	<b>EI 120 C/C</b>
Maximum 110 mm diameter, wall thickness 1.8-6.3 mm	10-30 mm	1 & 2	<b>EI 30 U/C</b>

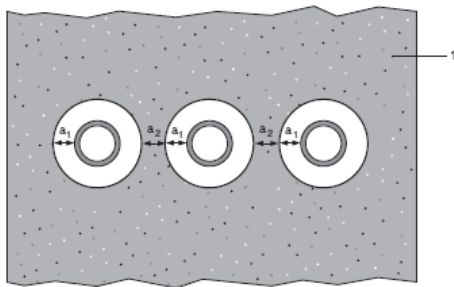
#### A.4.4 Penetration seals, surface mounted in concrete floors

**Penetration Seal:** Metallic pipes insulated with Elastomeric insulation minimum class B-s3, d0, Continuous Sustained (CS), sealed with Gyproc Graphite Fire Sealant, minimum 45 mm deep to both sides of the floor and backed with AES Fibre (128 kg/m<sup>3</sup> density), minimum 30 mm deep. Minimum separation between penetration seals of 30 mm (a<sub>2</sub>).

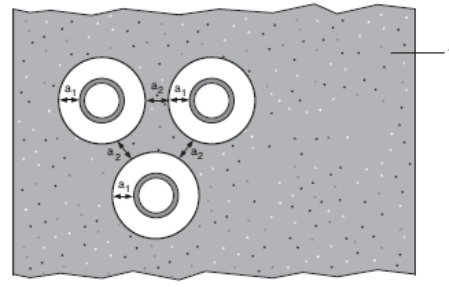
Construction details:



Configuration 1:



Configuration 2:



**Key**

- 1 Supporting construction
- a<sub>1</sub> Pipe / edge of seal separation (annular space)
- a<sub>2</sub> Separation between penetration seals

**A.4.4.1**

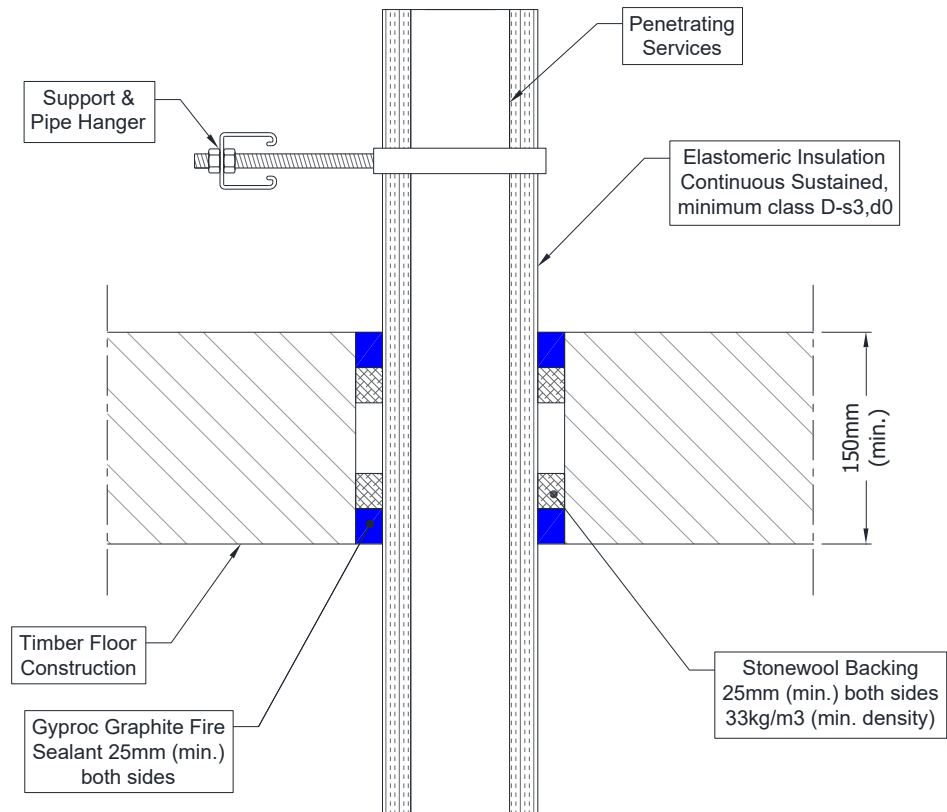
Services	Seal & backing material width (a1)	Permitted configuration for seal separation	Insulation CS	Classification
Mild or stainless steel pipe, with Elastomeric insulation minimum class B-s3, d0				
Maximum 324 mm diameter, wall thickness 1.0-14.2 mm	10-30 mm	1 & 2	25-50 mm Elastomeric insulation minimum class B-s3, d0	<b>EI 60 C/U</b>
Maximum 324 mm diameter, wall thickness 6.35-14.2 mm	10-30 mm	1 & 2	50 mm Elastomeric insulation minimum class B-s3, d0	<b>EI 120 C/U</b>

## A.5 Timber floor constructions with floor thickness of minimum 150 mm

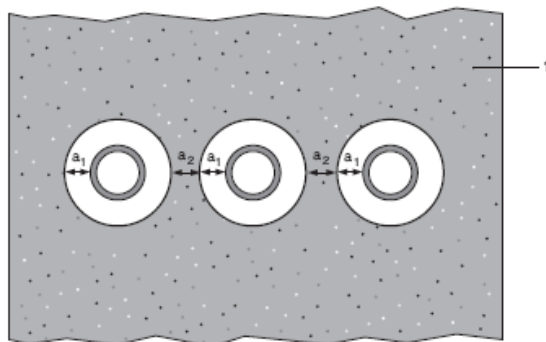
### A.5.1 Pipe penetration seals, in timber floors

**Penetration Seal:** Metallic pipes insulated with Elastomeric insulation minimum class D-s3,d0, Continuous Sustained (CS), sealed with Gyproc Graphite Fire Sealant, minimum 25 mm deep to both sides of the floor and backed with Stone wool (minimum 33 kg/m<sup>3</sup> density), minimum 25 mm deep. Minimum separation between penetration seals of 0 mm (a2).

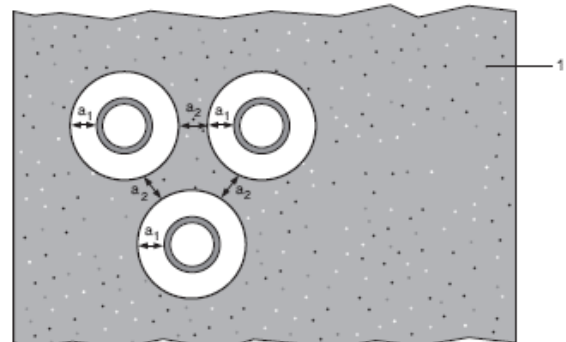
Construction details:



Configuration 1:



Configuration 2:



#### Key

1 Supporting construction

a<sub>1</sub> Pipe / edge of seal separation (annular space)

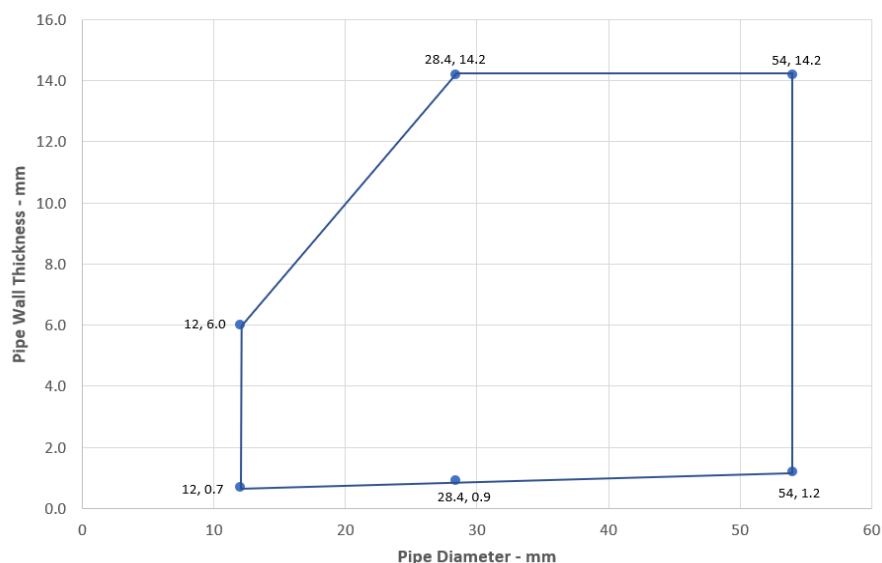
a<sub>2</sub> Separation between penetration seals

### A.5.1.1

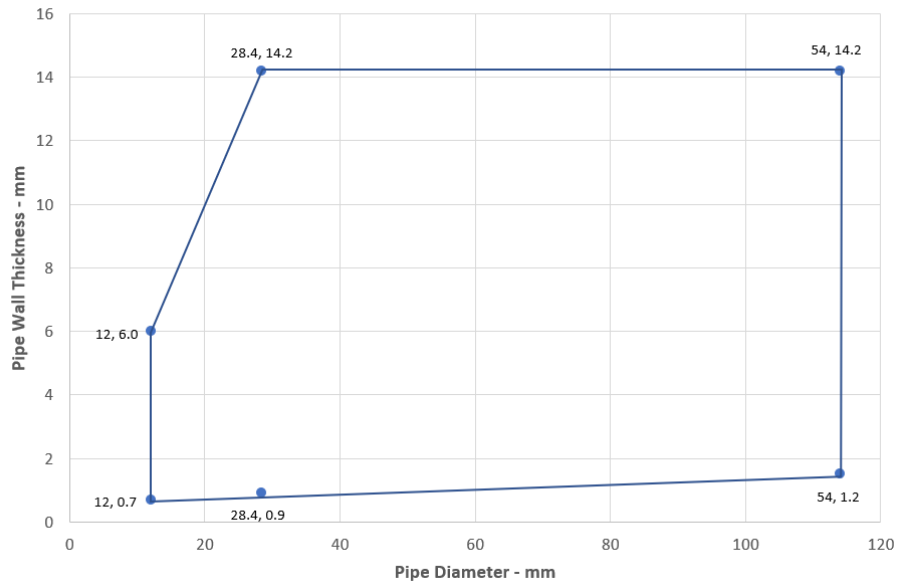
Services	Seal & backing material width (a1)	Permitted configuration for seal separation	Insulation CS	Classification
<b>Copper, mild or stainless steel pipe</b>				
Diameter 12 mm, wall thickness 0.7 mm	10 mm	1	9 mm Elastomeric insulation minimum class D-s3, d0	EI 120 C/C
Diameter 12-54 mm, wall thickness*				E 120 C/C, EI 45 C/C
Diameter 12-54 mm, wall thickness*			10-25 mm Elastomeric insulation minimum class D-s3, d0	E 120 C/C, EI 30 C/C
<b>Mild or stainless steel pipe, with Elastomeric insulation minimum class D-s3, d0</b>				
Diameter 12-114 mm, wall thickness*	10 mm	1	9-24 mm Elastomeric insulation minimum class D-s3, d0	E 120 C/C, EI 45 C/C
Diameter 12-114 mm, wall thickness*			25 mm Elastomeric insulation minimum class D-s3, d0	E 120 C/C, EI 60 C/C
Diameter 114 mm, wall thickness 1.5-14.2 mm			9-25 mm Elastomeric insulation minimum class D-s3, d0	E 120 C/U, EI 45 C/U
Diameter 114 mm, wall thickness 1.5-14.2 mm			25 mm Elastomeric insulation minimum class D-s3, d0	E 120 C/U, EI 60 C/U
<b>Alupex pipe, with Elastomeric insulation minimum class D-s3, d0</b>				
Diameter 16 mm, wall thickness 2.25 mm	10 mm	1	9 mm Elastomeric insulation minimum class D-s3, d0	EI 120 C/C
Diameter 16-75 mm, wall thickness*			9-24 mm Elastomeric insulation minimum class D-s3, d0	E 120 C/C, EI 60 C/C
Diameter 16-75 mm, wall thickness*			25 mm Elastomeric insulation minimum class D-s3, d0	E 120 C/C, EI 90 C/C

\*See below graph for interpolation pipe sizes

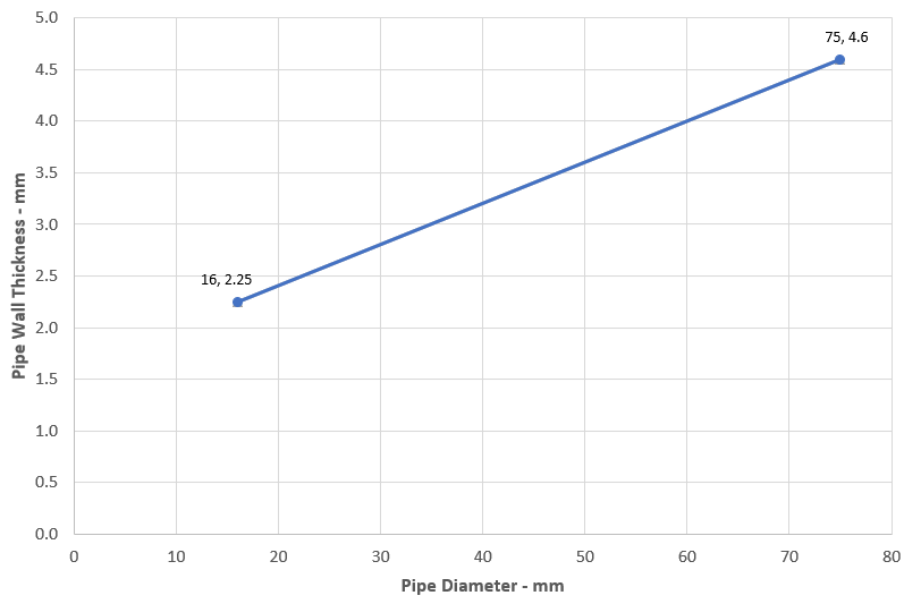
**Copper or Steel Pipes with Elastomeric Insulation - C/C**



### Steel Pipes with Elastomeric Insulation - C/C



### Alupex Pipes with Elastomeric Insulation - C/C



## ANNEX B – Air Permeability – Gyproc Graphite Fire Sealant

Product tested	25mm deep x 30mm wide Gyproc Graphite Fire Sealant		
	Summary of testing procedure		Result
	Pressure (Pa)	Leakage (m <sup>3</sup> /h)	Leakage (m <sup>3</sup> /m <sup>2</sup> /h)
Results under negative chamber pressure	25	0.00	0.00
	50	0.00	0.00
	100	0.00	0.00
	200	0.00	0.00
	300	0.02	0.56
	450	0.06	1.67
	600	0.12	3.33
Results under positive chamber pressure	25	0.00	0.00
	50	0.00	0.00
	100	0.00	0.00
	200	0.00	0.00
	300	0.00	0.00
	450	0.03	0.83
	600	0.13	3.61

