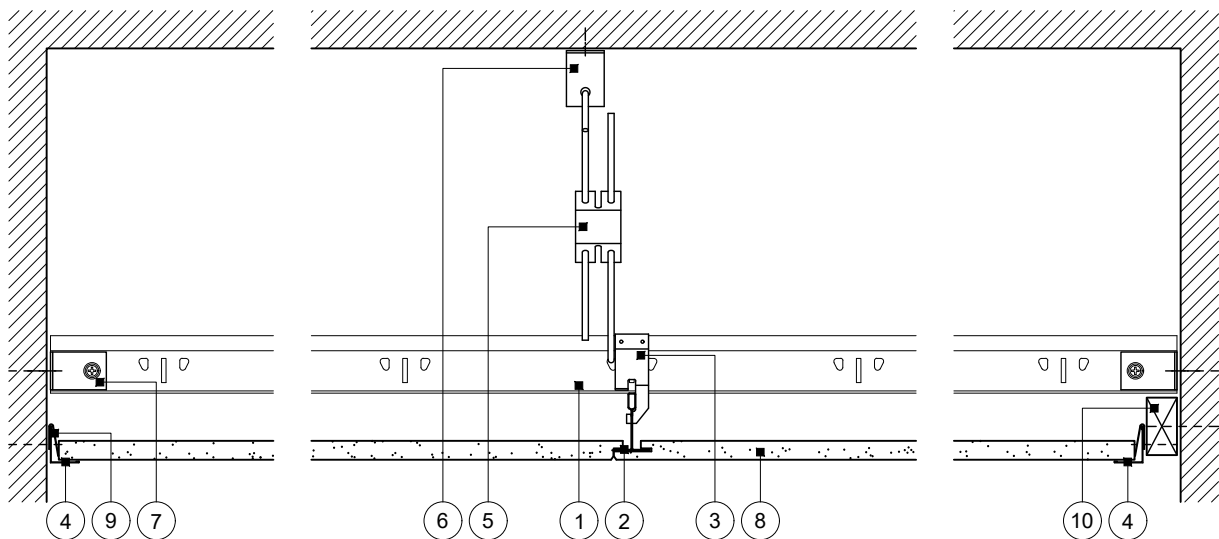


# Standard Detail

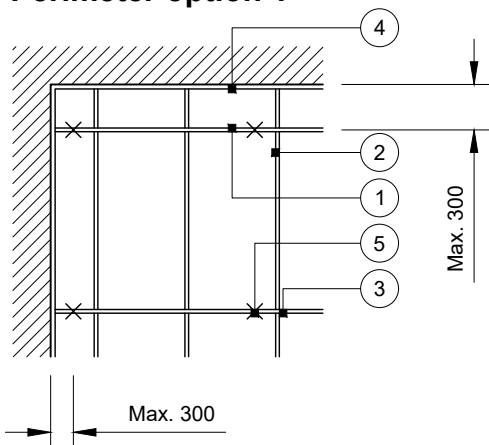
This drawing provides general guidance where no performance criteria is given and site specific conditions are not taken into account

## GypCeiling Concealed

- 1 CasoLine Quick-Lock Grid Main Tee at 1200mm centres
- 2 CasoLine Quick-Lock Grid Main Tee at 600mm centres
- 3 Cross Lock Connector at junction of main tees
- 4 CasoLine Quick-Lock Grid Wall Angle suitably fixed to wall/batten at 300mm centres
- 5 CasoLine Quick-Lock Grid Hanger or suspension wire (14 SWG) by others at 1200mm centres
- 6 Gypframe MF12 Soffit Cleat suitably fixed to soffit
- 7 Gypframe MF12 Soffit Cleat fixed to alternate main tees with suitable British Gypsum wafer head screws and suitably fixed to wall
- 8 Gypsum tiles with edge profile D2
- 9 Wall Spring
- 10 Timber batten suitably fixed to wall



**Perimeter option 1**



### Layout

1200 x 600mm module

**Perimeter option 2**

**Title:** GypCeiling Concealed  
Tile edge profile D2  
Standard details read with project specification

**Scale at A4:** 1:5  
**Date:** November 2022  
**Dwg No.:** ST-328-ZZD2-01

**Drawn:** MRC  
**Approved:** MBH  
**Revision:**

**Technical Support Team | british-gypsum.com**

This drawing is provided to customers free of charge and the details shown are subject to the accuracy of the information provided to British Gypsum at the time the drawing was originally requested. The drawing should therefore be approved by the project design and management authority before use to ensure that it meets with their specific project requirements. It should also be read in conjunction with British Gypsum's current literature available at [www.british-gypsum.com](http://www.british-gypsum.com). Taping and finishing in accordance with British Gypsum's current recommendations is assumed (with the exception of FireCase system). Please note the drawing may show British Gypsum products fixed by or to products that are non-British Gypsum products/fixings please refer to Specifying Authority for specification details. This drawing is valid at the time of issue, please check with British Gypsum for the latest version. No duty of care is owed to the recipient or any third party and British Gypsum excludes all liability in respect of the details shown save where death or personal injury is caused due to British Gypsum's negligence or for fraud.