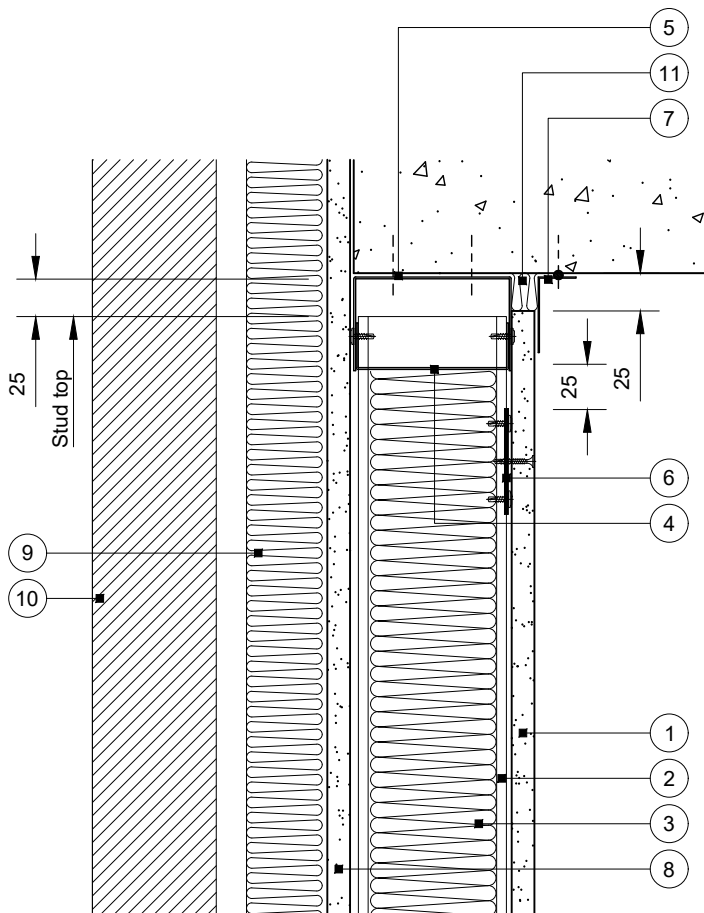


Standard Detail

This drawing provides general guidance where no performance criteria is given and site specific conditions are not taken into account

GypLyner Xternal

- 1 One layer Gyproc plasterboard or Glasroc specialist board fixed with suitable British Gypsum screws at 300mm centres (200mm centres at external angles)
- 2 Indicative Hadley SFS studs at specified centres
- 3 Isover insulation where required
- 4 Hadley Slip Klip fixed to channel with two suitable British Gypsum screws
- 5 Indicative Hadley SFS Channel suitably fixed to soffit
- 6 Gypframe GFS1 Fixing Strap fixed to each stud with two suitable British Gypsum wafer head screws to receive uppermost board fixings (no fixings into head channel)
- 7 Gypframe GA4 Steel Angle bedded on a continuous bead of Gyproc Sealant and suitably fixed to soffit at 600mm centres with fire resistant fixings
- 8 One layer 12.5mm Glasroc X Sheathing Board fixed with 25mm Glasroc X Screws (max. 2mm metal thickness) at 300mm centres. Continuous 6mm bead of Glasroc X Sealant at board joints
- 9 Isover Polterm Max Plus (thickness to suit specification) suitably fixed through board to SFS studs
- 10 Indicative external finish with appropriate cavity barriers by others
- 11 Stone mineral wool 33kg/m³ minimum density by others



A 25mm designed deflection head gap could accommodate approximately 20mm downward movement. This is due to the stone mineral wool in the head not being able to fully compress

Deflection head

20mm Downward movement

Important information

Fire resistance BS EN 1364-1

- Up to 60 minutes through wall subject to specification

Title: GypLyner Xternal
SFS studs and one layer board
Standard details read with project specification

Scale at A4: 1:5
Date: August 2022
Dwg No.: ST-225-ZZL1-01

Drawn: MBH
Approved: MFK JMC
Revision:

Technical Support Team | british-gypsum.com