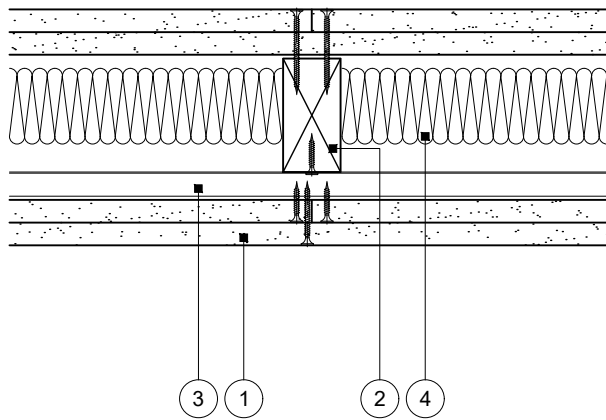


Standard Detail

This drawing provides general guidance where no performance criteria is given and site specific conditions are not taken into account

Timber stud partition with resilient bars

- 1 Two layers Gyproc plasterboard or Glasroc specialist board fixed with suitable British Gypsum screws at 300mm centres (200mm centres at external angles)
- 2 Timber studs at specified centres
- 3 Horizontal Gypframe RB1 Resilient Bars at specified centres fixed to all studs with suitable British Gypsum screws
- 4 Isover insulation where required



Intermediate stud

Title: Timber stud partition with resilient bars
Two layers board
Standard details read with project specification

Scale at A4: 1:5
Date: April 2024
Dwg No.: ST-134-ZBL2-01

Drawn: MRC
Approved: MBH
Revision:

Technical Support Team | british-gypsum.com

This drawing is provided to customers free of charge and the details shown are subject to the accuracy of the information provided to British Gypsum at the time the drawing was originally requested. The drawing should therefore be approved by the project design and management authority before use to ensure that it meets with their specific project requirements. It should also be read in conjunction with British Gypsum's current literature available at www.british-gypsum.com. Taping and finishing in accordance with British Gypsum's current recommendations is assumed (with the exception of FireCase system). Please note the drawing may show British Gypsum products fixed by or to products that are non-British Gypsum products/fixings please refer to Specifying Authority for specification details. This drawing is valid at the time of issue, please check with British Gypsum for the latest version. No duty of care is owed to the recipient or any third party and British Gypsum excludes all liability in respect of the details shown save where death or personal injury is caused due to British Gypsum's negligence or for fraud.