

GypWall Shaft

- 1

Two layers Gyproc plasterboard or Glasroc specialist board fixed with suitable British Gypsum screws at 300mm centres (200mm centres at external angles)
- 2

19mm Gyproc CoreBoard or 20mm Glasroc F FireCase
- 3

Gypframe 'I' studs (tabbed 'I' studs for 146mm) at specified centres
- 4

Gypframe Retaining Channel
- 5

Isover insulation where required
- 6

Gypframe Extra Deep Channel ('J' Channel for 62mm) suitably fixed through board to fixing strap or soffit at 300mm centres (at 600mm centres in two lines staggered by 300mm for 94mm and 148mm channels)
- 7

Gyproc Sealant for optimum sound insulation
- 8

Gyproc FireStrip
- 9

One or two channel width strip(s) of board (see table). Two strips pre-fixed to channel from underside with suitable British Gypsum screws at 600mm centres
- 10

Uppermost board fixing to studs
- 11

Two or three firestops (see table) 36/46/68/122mm width (to suit 60/70/92/146mm studs) cut from 19mm Gyproc CoreBoard or 20mm Glasroc F FireCase, installed between studs and fixed to channel with two suitable British Gypsum screws
- 12

Gypframe steel angle or timber batten suitably fixed to channel to retain insulation where required
- 13

Two 50mm width strips of Glasroc F FireCase fixed through board to fixing strap or soffit with suitable fire resistant fixings at 600mm centres, or Gypframe Steel Angle bedded on bead of Gyproc Sealant and fixed through board to fixing strap or soffit with suitable fire resistant fixings at 600mm centres (see table)
- 14

Profile sheet decking
- 15

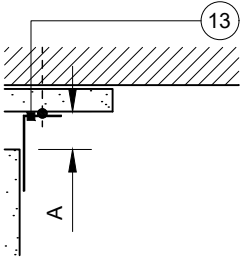
15mm Glasroc F FireCase suitably fixed to soffit at 150mm centres (min. 50mm overlap on soffit)
- 16

Gypframe GFS1 Fixing Strap suitably fixed to soffit with pairs of fixings at 600mm centres
- 17

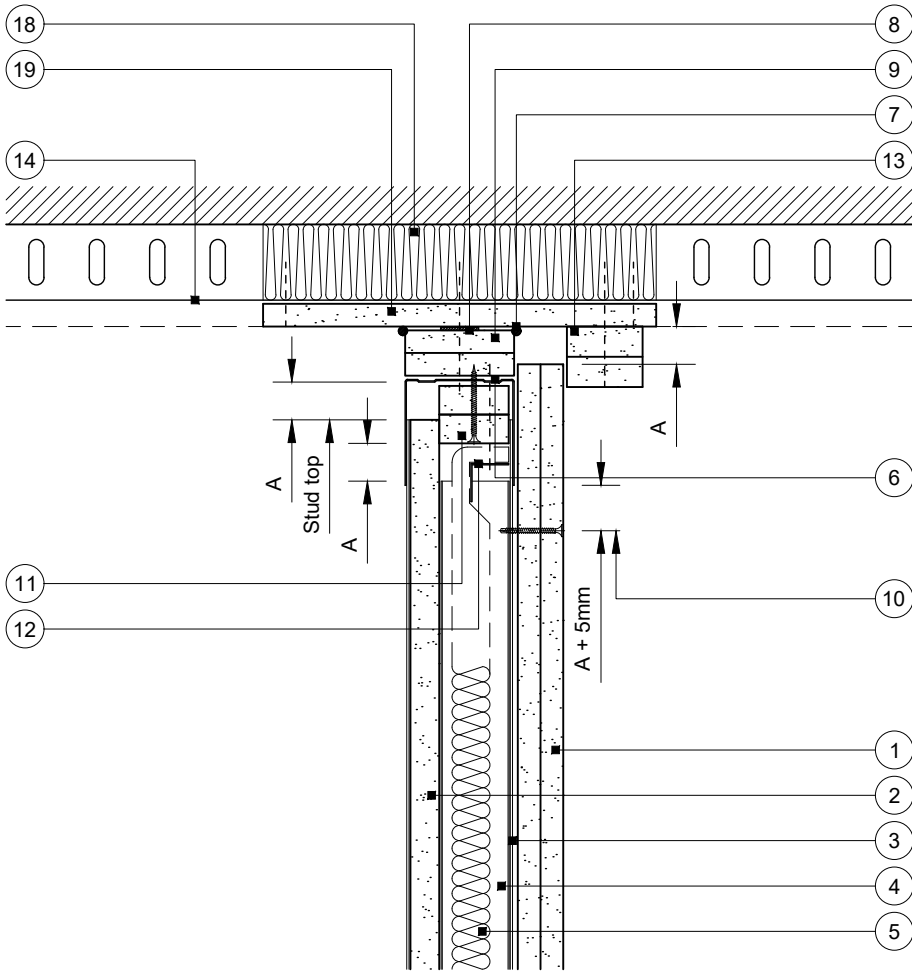
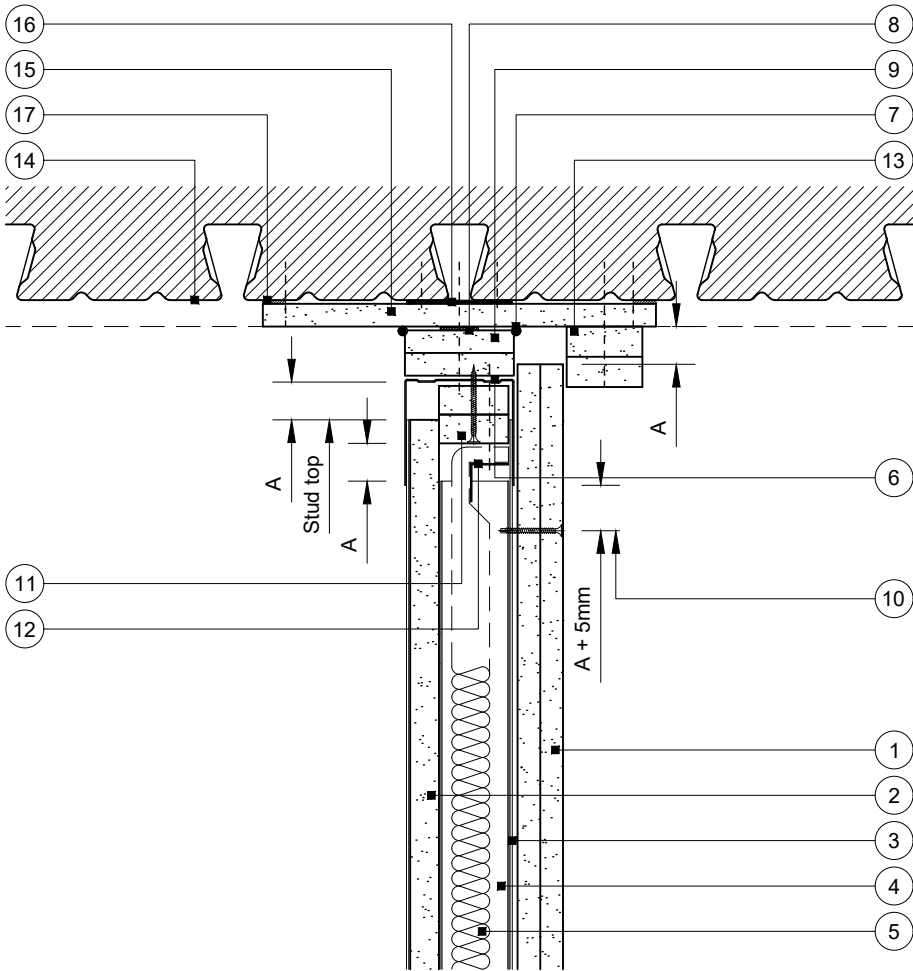
Fire resistant sealant manufactured and supplied by others
- 18

Suitable fire stopping material by others (see important information)
- 19

Packer of 15mm Glasroc F FireCase suitably fixed to soffit



Alternative cloaking detail



DEFLECTION (VERTICAL) HEAD DESIGN			
DEFLECTION DIM. A	DROPPED SOFFIT NOTE 9	FIRESTOP NOTE 11	CLOAKING ELEMENT NOTE 13
1-15mm	One 19mm ^A or 20mm ^B	Two	Optional GA4 ^C
16-20mm	Two 15mm ^B	Two	Two 15mm ^B or GA4
21-25mm	Two 15mm ^B	Two	Two 20mm ^B or GA4
26-30mm	Two 20mm ^B	Two	Two 20mm ^B or GA7
31-35mm ^D	Two 20mm ^B	Three	Two 25mm ^B or GA7
36-40mm ^D	Two 25mm ^B	Three	Two 25mm ^B or GA7
41-45mm ^D	Two 25mm ^B	Three	Two 30mm ^B or GA7
46-50mm ^D	Two 30mm ^B	Three	Two 30mm ^B or GA7

^A Gyproc CoreBoard
^B Glasroc F FireCase
^C For optimum sound insulation
^D Maximum 30mm for 'J' Channel

Important information

Fire resistance BS EN 1364-1

- 60 minutes through partition subject to specification
- 60 minutes evidence based opinion room to room through junction subject to partition specification

Performance is based on maintaining compartmentation through the British Gypsum partition up to the line of the abutting structural element. This is on the basis the structural element has at least the equivalent fire resistance performance to that of the partition. The drawing should be approved by the project design and management authority before use to ensure that it meets with their specific project requirements

Performance characteristics of the British Gypsum system must be maintained. It is important that a suitable fire stopping product with appropriate fire resistance substantiation is sought from a third party manufacturer

Deflection head parallel and perpendicular to dovetail profile soffit

Downward (vertical) movement

Rev. B 21.03.24 Added GA7 (MBH)

Title: Construction detail

Scale at A3: 1:5

Date: December 2021

Dwg No.: CN-129-004

Drawn: MRC

Approved: MKF JMC

Revision: B

Technical Support Team | british-gypsum.com

This drawing is provided to customers free of charge and the details shown are subject to the accuracy of the information provided to British Gypsum at the time the drawing was originally requested. The drawing should therefore be approved by the project design and management authority before use to ensure that it meets with their specific project requirements. It should also be read in conjunction with British Gypsum's current literature available at www.british-gypsum.com. Taping and finishing in accordance with British Gypsum's current recommendations is assumed (with the exception of FireCase system). Please note the drawing may show British Gypsum products fixed by or to products that are non-British Gypsum products/fixings please refer to Specifying Authority for specification details. This drawing is valid at the time of issue, please check with British Gypsum for the latest version. No duty of care is owed to the recipient or any third party and British Gypsum excludes all liability in respect of the details shown save where death or personal injury is caused due to British Gypsum's negligence or for fraud.