

Construction Detail

This drawing provides guidance to achieve indicative performance criteria for specific design conditions

GypWall Resilient

- 1

Two layers Gyproc plasterboard or Glasroc specialist board fixed with suitable British Gypsum screws at 300mm centres (200mm centres at external angles)
- 2

Gypframe stud type and centres as specified
- 3

Horizontal Gypframe RB1 Resilient Bars at specified centres fixed to all studs with suitable British Gypsum wafer head screws
- 4

Isover insulation where required
- 5

Gypframe Deep Channel or Extra Deep Channel (see table) suitably fixed through board to fixing channel or soffit at 600mm centres (in two lines staggered by 300mm for 94mm and 148mm channels)
- 6

Gyproc Sealant for optimum sound insulation
- 7

Gyproc FireStrip
- 8

One or two channel width +15mm (ie. 72+15mm) strip(s) of board (see table). Two strips pre-fixed to channel with suitable British Gypsum screws at 600mm centres
- 9

Gypframe GFS1 Fixing Strap fixed through board to studs with suitable British Gypsum screws at 1200mm centres to receive uppermost board fixings (no fixings into head channel)
- 10

Gypframe steel angle or timber batten suitably fixed to channel to retain insulation where required
- 11

Two 50mm width strips of Glasroc F FireCase fixed through board to fixing channel or soffit with suitable fire resistant fixings at 600mm centres, or Gypframe Steel Angle bedded on bead of Gyproc Sealant and fixed through board to fixing channel or soffit with suitable fire resistant fixings at 600mm centres (see table)
- 12

Profile sheet decking
- 13

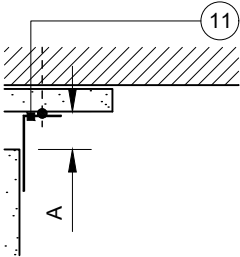
15mm Glasroc F FireCase suitably fixed to soffit at 150mm centres (min. 50mm overlap on soffit)
- 14

Gypframe 99 FC 50 Fixing Channel at 600mm centres (300mm centres for 94mm and 148mm channels) suitably fixed to soffit (flanges snipped and bent flat to facilitate fixing)
- 15

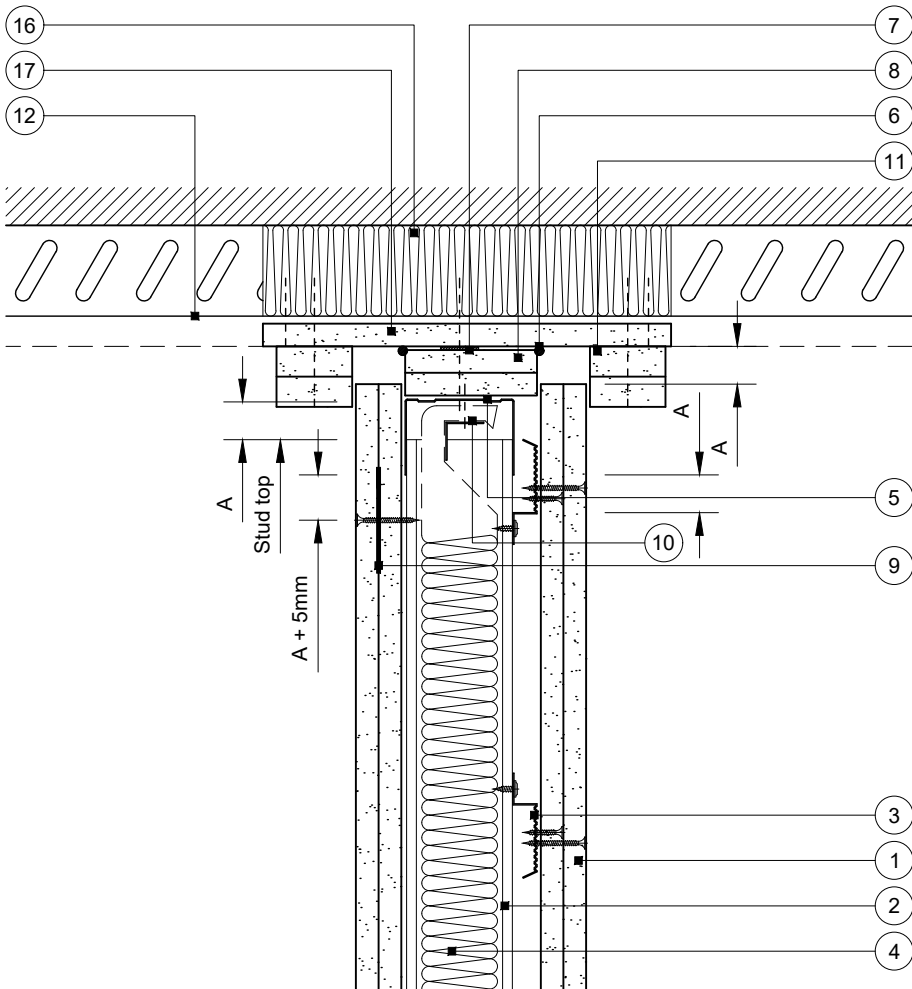
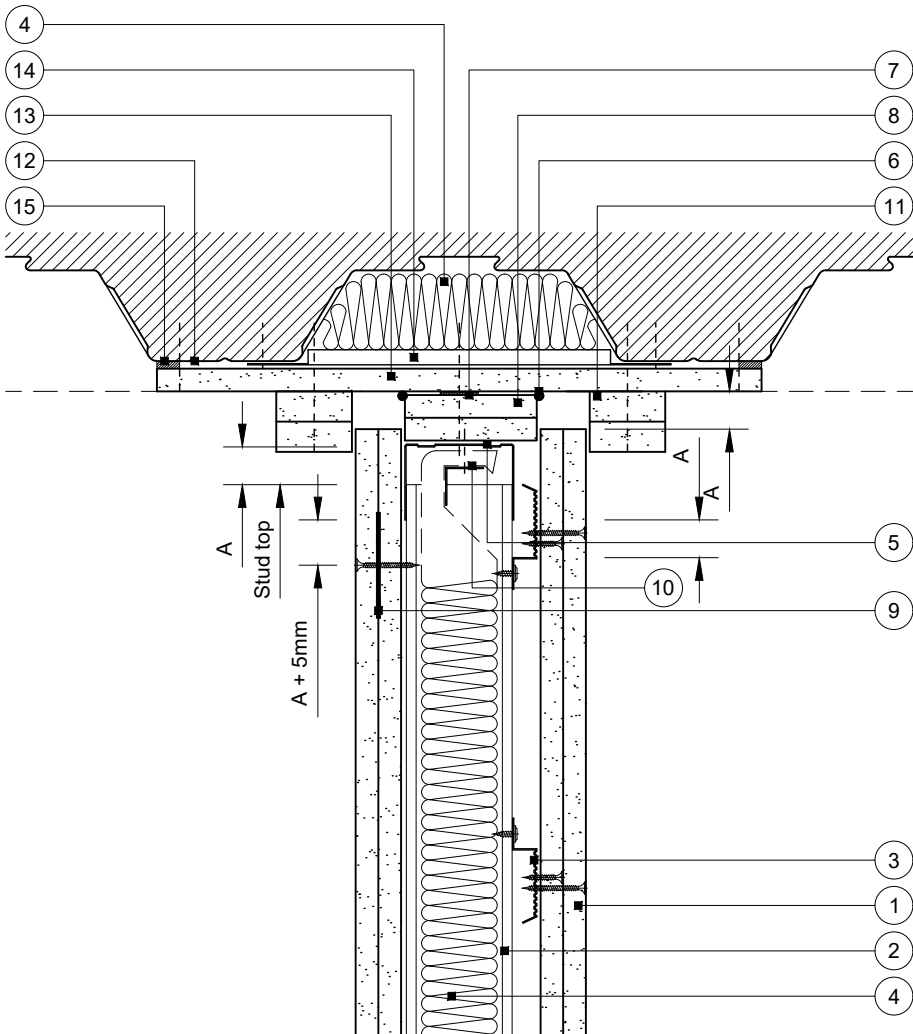
Fire resistant sealant manufactured and supplied by others
- 16

Suitable fire stopping material by others (see important information)
- 17

Packer of 15mm Glasroc F FireCase suitably fixed to soffit



Alternative cloaking detail



DEFLECTION (VERTICAL) HEAD DESIGN			
DEFLECTION DIM. A	DROPPED SOFFIT NOTE 8	CHANNEL NOTE 5	CLOAKING ELEMENT NOTE 11
1-15mm	One 19mm <sup>A</sup> or 20mm <sup>B</sup>	DC	Two 15mm <sup>B</sup> or GA4
16-20mm	Two 15mm <sup>B</sup>	DC	Two 15mm <sup>B</sup> or GA4
21-25mm	Two 15mm <sup>B</sup>	DC	Two 20mm <sup>B</sup> or GA4
26-30mm	Two 20mm <sup>B</sup>	DC	Two 20mm <sup>B</sup> or GA7
31-35mm	Two 20mm <sup>B</sup>	EDC	Two 25mm <sup>B</sup> or GA7
36-40mm	Two 25mm <sup>B</sup>	EDC	Two 25mm <sup>B</sup> or GA7
41-45mm	Two 25mm <sup>B</sup>	EDC	Two 30mm <sup>B</sup> or GA7
46-50mm	Two 30mm <sup>B</sup>	EDC	Two 30mm <sup>B</sup> or GA7

<sup>A</sup> Gyproc CoreBoard  
<sup>B</sup> Glasroc F FireCase

!

Important information

Fire resistance BS EN 1364-1

- 30 or 60 minutes through partition subject to specification
- 30 or 60 minutes evidence based opinion room to room through junction subject to partition specification

Performance is based on maintaining compartmentation through the British Gypsum partition up to the line of the abutting structural element. This is on the basis the structural element has at least the equivalent fire resistance performance to that of the partition. The drawing should be approved by the project design and management authority before use to ensure that it meets with their specific project requirements

Performance characteristics of the British Gypsum system must be maintained. It is important that a suitable fire stopping product with appropriate fire resistance substantiation is sought from a third party manufacturer

Deflection head parallel and perpendicular to trapezoidal profile soffit

Downward (vertical) movement

Rev. B 21.03.24 Added GA7 (MBH)

Title: Construction detail

Scale at A3: 1:5

Date: March 2022

Dwg No.: CN-124-002

Drawn: MRC

Approved: MKF JMC

Revision: B

Technical Support Team | british-gypsum.com

This drawing is provided to customers free of charge and the details shown are subject to the accuracy of the information provided to British Gypsum at the time the drawing was originally requested. The drawing should therefore be approved by the project design and management authority before use to ensure that it meets with their specific project requirements. It should also be read in conjunction with British Gypsum's current literature available at [www.british-gypsum.com](http://www.british-gypsum.com). Taping and finishing in accordance with British Gypsum's current recommendations is assumed (with the exception of FireCase system). Please note the drawing may show British Gypsum products fixed by or to products that are non-British Gypsum products/fixings please refer to Specifying Authority for specification details. This drawing is valid at the time of issue, please check with British Gypsum for the latest version. No duty of care is owed to the recipient or any third party and British Gypsum excludes all liability in respect of the details shown save where death or personal injury is caused due to British Gypsum's negligence or for fraud.