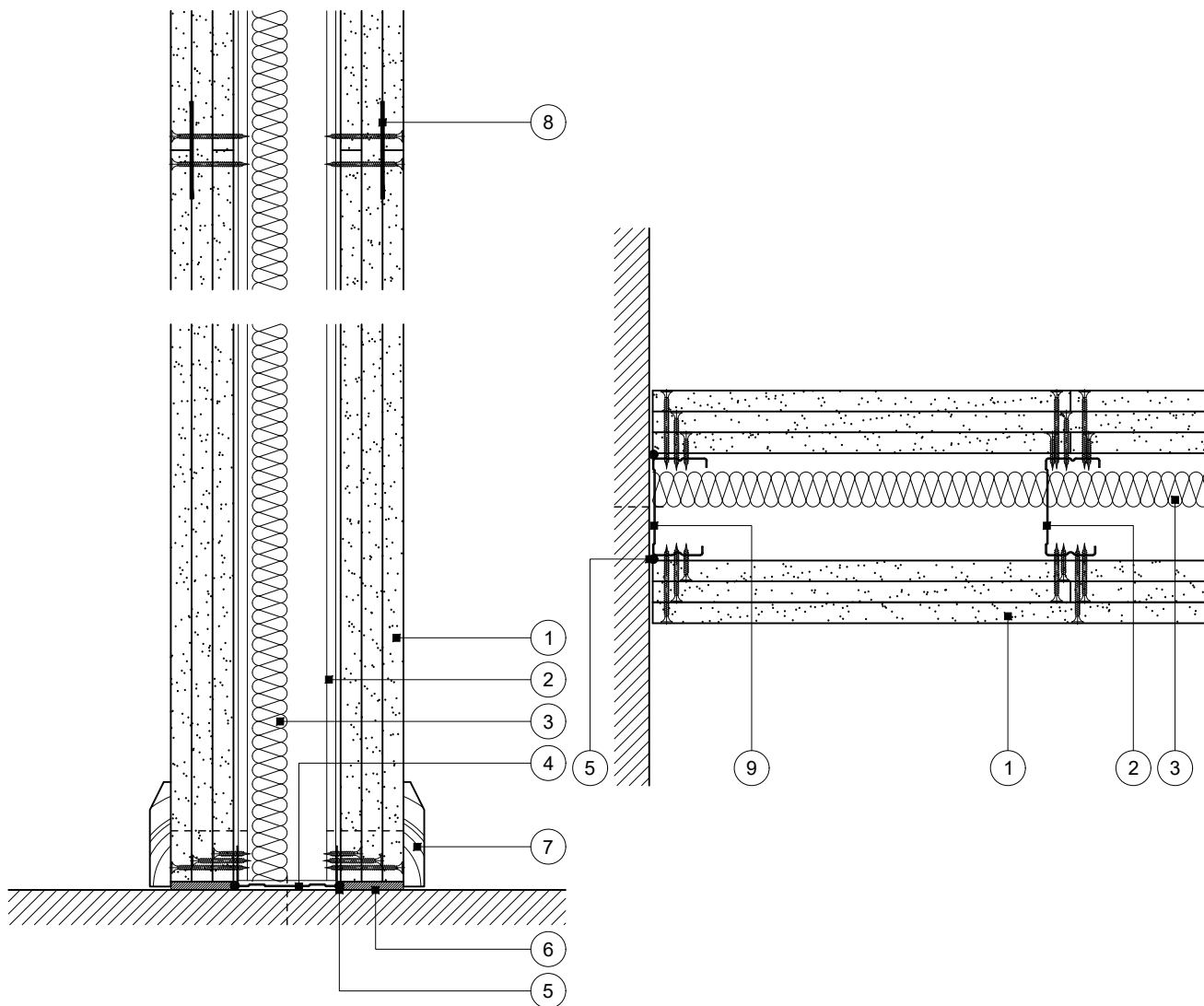


Standard Detail

This drawing provides general guidance where no performance criteria is given and site specific conditions are not taken into account

GypWall Single Frame

- | | | | |
|---|---|---|---|
| 1 | Three layers Gyproc plasterboard or Glasroc specialist board fixed with suitable British Gypsum screws at 300mm centres (200mm centres at external angles) | 6 | Gyproc jointing material bulk fill where gap exceeds 5mm |
| 2 | Gypframe 'C' studs at specified centres | 7 | Indicative skirting |
| 3 | Isover insulation where required | 8 | Gypframe GFS1 Fixing Strap progressively inserted between board layers to support outer layer horizontal board joints |
| 4 | Gypframe Channel suitably fixed to floor at 600mm centres (in two lines staggered by 300mm for 94mm and 148mm channels). Deep Channel for heights between 4200mm and 8000mm or Extra Deep Channel for heights over 8000mm | 9 | Gypframe 'C' stud suitably fixed to wall at 600mm centres (in two lines staggered by 300mm for 92mm and 146mm studs) |
| 5 | Gyproc Sealant for optimum sound insulation | | |



Base and horizontal board joint

Wall abutment

Title: GypWall Single Frame
'C' studs and three layers board
Standard details read with project specification

Scale at A4: 1:5
Date: January 2021
Dwg No.: ST-121-Z1L3-01

Drawn: MBH
Approved: DRM
Revision:

Technical Support Team | british-gypsum.com

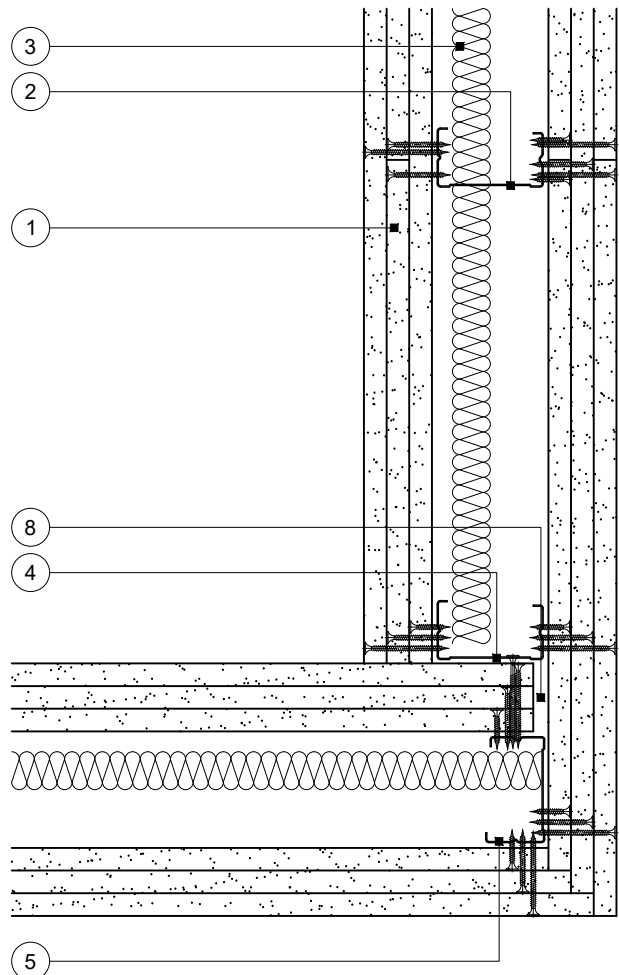
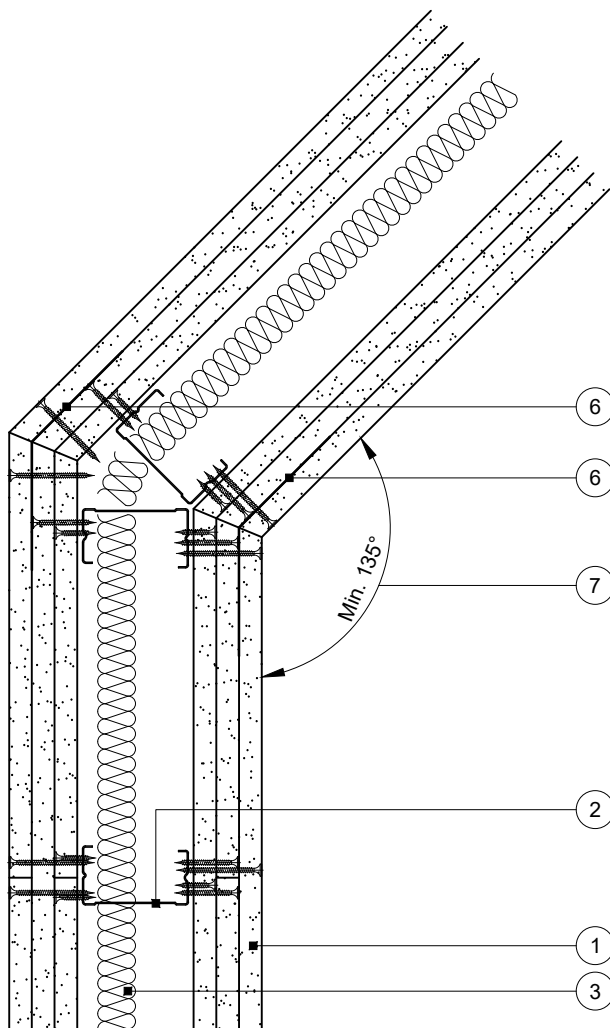
This drawing is provided to customers free of charge and the details shown are subject to the accuracy of the information provided to British Gypsum at the time the drawing was requested. The drawing should therefore be approved by the project design and management authority before use to ensure that it meets with the specific project requirements. It should also be read in conjunction with British Gypsum's current literature available at www.british-gypsum.com. Taping and finishing recommendations are given in accordance with British Gypsum's current recommendations and are subject to change without notice. No liability is accepted for any loss or damage that may be caused by the use of the drawing. No warranty is made and no responsibility is assumed (with the exception of FireCase systems). Please note the drawing may show British Gypsum products fixed by or to products that are non-British Gypsum products/finishes please refer to Specifying Authority for specification details. This drawing is valid at the time of issue, please check with British Gypsum for the latest version. No duty of care is owed to the recipient or any third party and British Gypsum excludes all liability in respect of the details shown save where death or personal injury is caused due to British Gypsum's negligence or for fraud.

Standard Detail

This drawing provides general guidance where no performance criteria is given and site specific conditions are not taken into account

GypWall Single Frame

- 1 Three layers Gyproc plasterboard or Glasroc specialist board fixed with suitable British Gypsum screws at 300mm centres (200mm centres at external angles)
- 2 Gypframe 'C' studs at specified centres
- 3 Isover insulation where required
- 4 Gypframe 'C' stud fixed through board to stud(s) with suitable British Gypsum screws at 600mm centres (in two lines staggered by 300mm for 92mm and 146mm studs)
- 5 Gypframe 'C' stud at junction (two for 92mm and 146mm studs in adjacent partition)
- 6 Gypframe GA6 Splayed Angle to receive outer layer board fixings
- 7 Minimum angle ensures Gypframe GA6 Splayed Angle is fixed to studs at external angle
- 8 Nominal 10mm gap between boards



Splayed angle

Corner

Optimum acoustic performance and reduced flanking transmission

Title: GypWall Single Frame
'C' studs and three layers board
Standard details read with project specification

Scale at A4: 1:5
Date: January 2021
Dwg No.: ST-121-Z1L3-02

Drawn: MBH
Approved: DRM
Revision:

Technical Support Team | british-gypsum.com

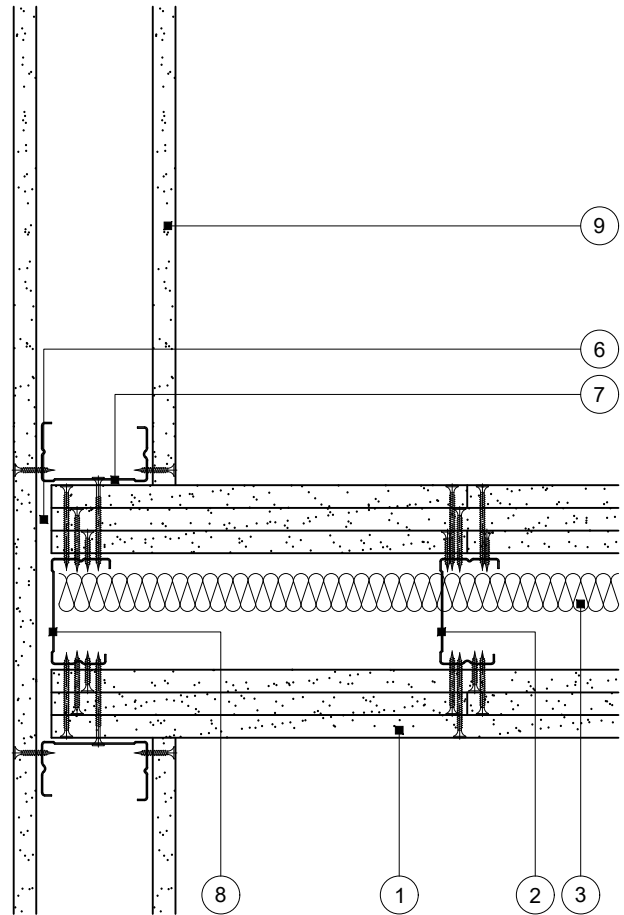
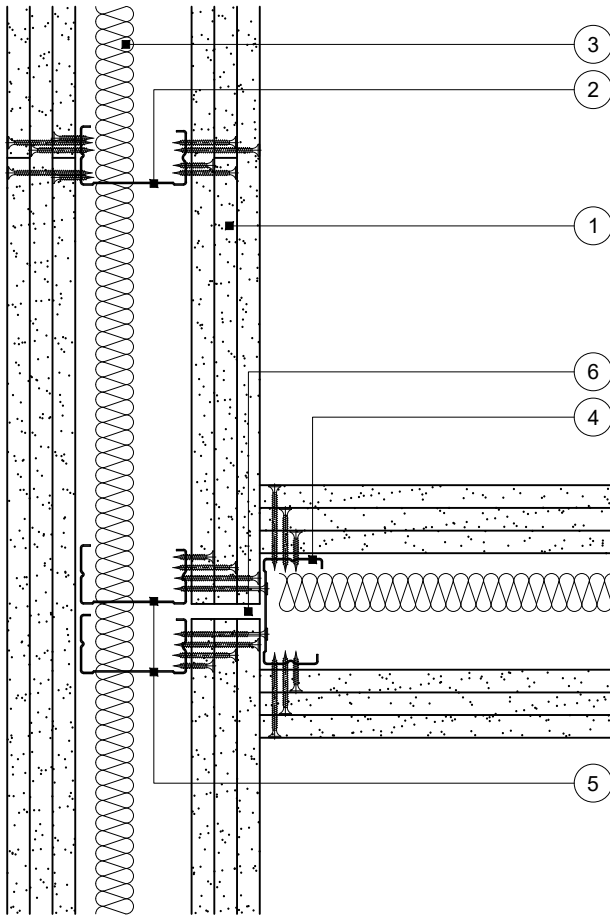
This drawing is provided to customers free of charge and the details shown are subject to the accuracy of the information provided to British Gypsum at the time the drawing was originally requested. The drawing should therefore be approved by the project design and management authority before use to ensure that it meets with their specific project requirements. It should also be read in conjunction with British Gypsum's current literature available at www.british-gypsum.com. Taping and finishing in accordance with British Gypsum's current recommendations is assumed (with the exception of FireCase system). Please note the drawing may show British Gypsum products fixed by or to products that are non-British Gypsum products/fixings please refer to Specifying Authority for specification details. This drawing is valid at the time of issue, please check with British Gypsum for the latest version. No duty of care is owed to the recipient or any third party and British Gypsum excludes all liability in respect of the details shown save where death or personal injury is caused due to British Gypsum's negligence or for fraud.

Standard Detail

This drawing provides general guidance where no performance criteria is given and site specific conditions are not taken into account

GypWall Single Frame

- 1 Three layers Gyproc plasterboard or Glasroc specialist board fixed with suitable British Gypsum screws at 300mm centres (200mm centres at external angles)
- 2 Gypframe 'C' studs at specified centres
- 3 Isover insulation where required
- 4 Gypframe 'C' stud fixed through board to studs with suitable British Gypsum screws at 600mm centres in two lines staggered by 300mm
- 5 Additional Gypframe 'C' studs at junction
- 6 Nominal 10mm gap between boards
- 7 Gypframe 'C' stud fixed through board to stud(s) with suitable British Gypsum screws at 600mm centres (in two lines staggered by 300mm for 92mm and 146mm studs)
- 8 Additional Gypframe 'C' stud at junction (two for 92mm and 146mm studs in adjacent partition)
- 9 One layer Gyproc plasterboard or Glasroc specialist board fixed with suitable British Gypsum screws at 300mm centres (200mm centres at external angles)



T-junction

Optimum acoustic performance and reduced flanking transmission

T-junction other partition

High meeting low acoustic performance

Title: GypWall Single Frame
'C' studs and three layers board
Standard details read with project specification

Scale at A4: 1:5
Date: January 2021
Dwg No.: ST-121-Z1L3-03

Drawn: MBH
Approved: DRM
Revision:

Technical Support Team | british-gypsum.com

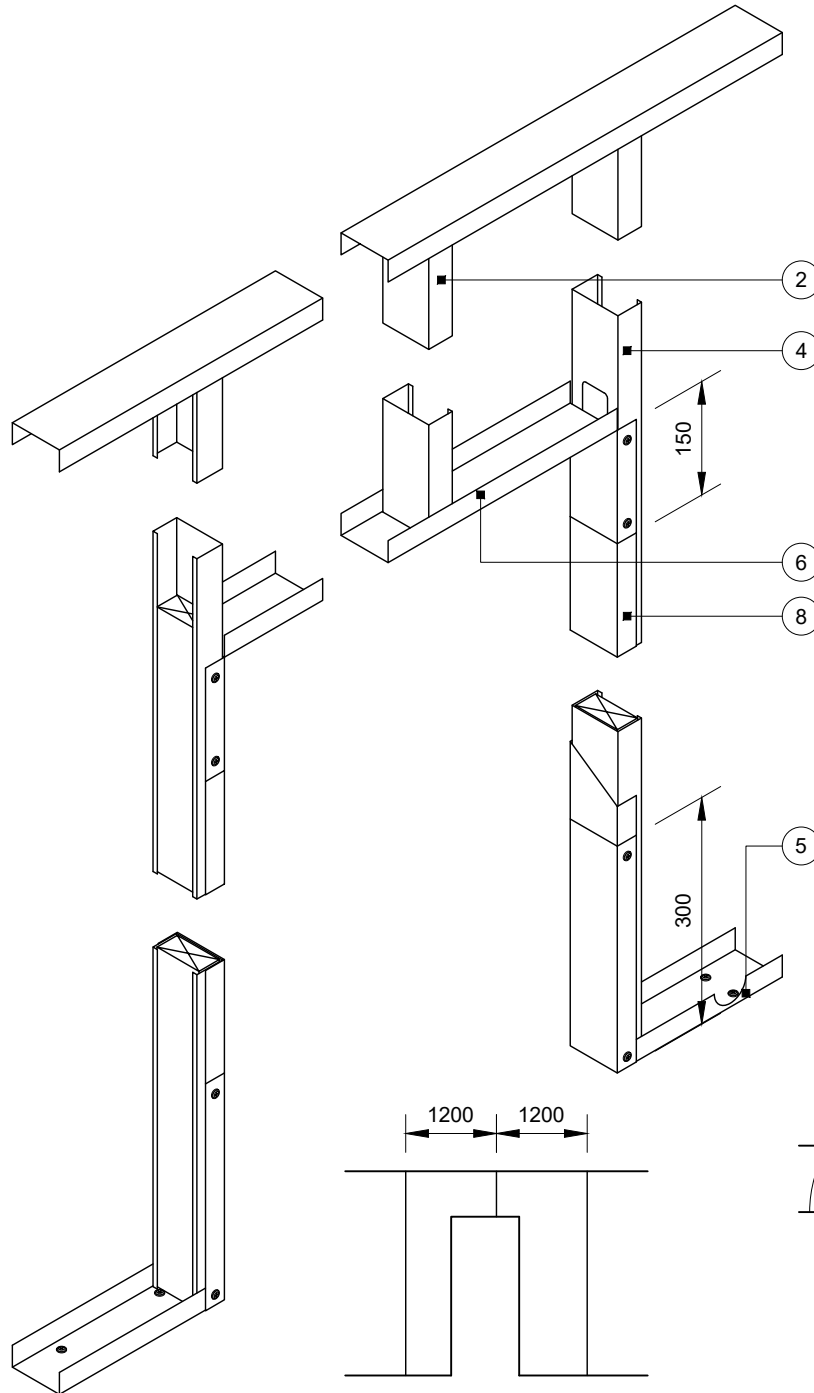
This drawing is provided to customers free of charge and the details shown are subject to the accuracy of the information provided to British Gypsum at the time the drawing was originally requested. The drawing should therefore be approved by the project design and management authority before use to ensure that it meets with their specific project requirements. It should also be read in conjunction with British Gypsum's current literature available at www.british-gypsum.com. Taping and finishing in accordance with British Gypsum's current recommendations is assumed (with the exception of FireCase system). Please note the drawing may show British Gypsum products fixed by or to products that are non-British Gypsum products/fixings please refer to Specifying Authority for specification details. This drawing is valid at the time of issue, please check with British Gypsum for the latest version. No duty of care is owed to the recipient or any third party and British Gypsum excludes all liability in respect of the details shown save where death or personal injury is caused due to British Gypsum's negligence or for fraud.

Standard Detail

This drawing provides general guidance where no performance criteria is given and site specific conditions are not taken into account

GypWall Single Frame

Advice should be sought from the door manufacturer or installer prior to construction of this detail

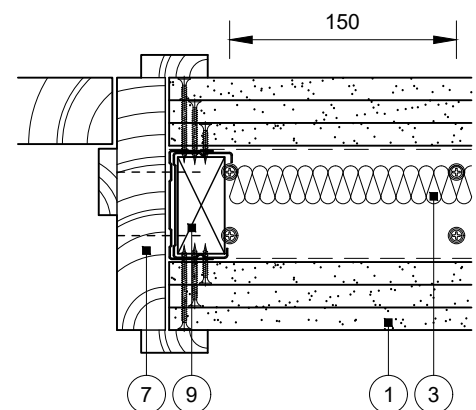


- 1 Three layers Gyproc plasterboard or Glasroc specialist board fixed with suitable British Gypsum screws at 300mm centres (200mm centres at external angles)
- 2 Gypframe 'C' studs at specified centres to maintain stud module
- 3 Isover insulation where required
- 4 Gypframe 'C' stud at jamb
- 5 Gypframe Channel suitably fixed to floor with two pairs of fixings at 150mm centres (four total) and at 600mm centres (in two lines staggered by 300mm for 94mm and 148mm channels) thereafter. Channel cut and bent to extend 300mm up stud and fixed through both flanges with two suitable British Gypsum wafer head screws. Deep Channel for heights between 4200mm and 8000mm or Extra Deep Channel for heights over 8000mm
- 6 Gypframe Channel cut and bent to extend 150mm down stud and fixed through both flanges with two suitable British Gypsum wafer head screws or crimped
- 7 Indicative timber door frame and architrave
- 8 Gypframe Channel sleeved over stud between returned channels at opening head and base
- 9 Optional indicative timber stud 42/64/86/140 x 30mm (to suit 48/70/92/146mm stud) to extend nominal 50mm above opening height

Partition elevation

Door opening width up to 1200mm

Maximum door weight 60kg to BS 5234: Parts 1 & 2: 1992 - Heavy and Severe Duty



Title: GypWall Single Frame
'C' studs and three layers board
Standard details read with project specification

Scale at A4: 1:5 1:10
Date: January 2021
Dwg No.: ST-121-Z1L3-04

Drawn: MBH
Approved: DRM
Revision:

Technical Support Team | british-gypsum.com

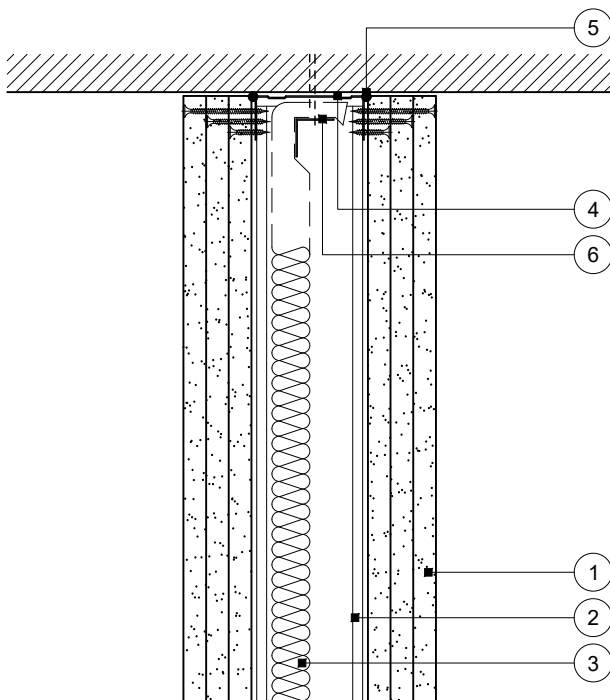
This drawing is provided to customers free of charge and the details shown are subject to the accuracy of the information provided to British Gypsum at the time the drawing was originally requested. The drawing should therefore be approved by the project design and management authority before use to ensure that it meets with their specific project requirements. It should also be read in conjunction with British Gypsum's current literature available at www.british-gypsum.com. Taping and finishing in accordance with British Gypsum's current recommendations is assumed (with the exception of FireCase system). Please note the drawing may show British Gypsum products fixed by or to products that are non-British Gypsum products/fixings please refer to Specifying Authority for specification details. This drawing is valid at the time of issue, please check with British Gypsum for the latest version. No duty of care is owed to the recipient or any third party and British Gypsum excludes all liability in respect of the details shown save where death or personal injury is caused due to British Gypsum's negligence or for fraud.

Standard Detail

This drawing provides general guidance where no performance criteria is given and site specific conditions are not taken into account

GypWall Single Frame

- 1 Three layers Gyproc plasterboard or Glasroc specialist board fixed with suitable British Gypsum screws at 300mm centres (200mm centres at external angles)
- 2 Gypframe 'C' studs at specified centres
- 3 Isover insulation where required
- 4 Gypframe Channel suitably fixed to soffit at 600mm centres (in two lines staggered by 300mm for 94mm and 148mm channels). Deep Channel for heights between 4200mm and 8000mm or Extra Deep Channel for heights over 8000mm
- 5 Gyproc Sealant for optimum sound insulation
- 6 Gypframe steel angle or timber batten suitably fixed to soffit to retain insulation where required



Head

No deflection allowance

Title: GypWall Single Frame
'C' studs and three layers board
Standard details read with project specification

Scale at A4: 1:5
Date: January 2021
Dwg No.: ST-121-Z1L3-05

Drawn: MBH
Approved: DRM
Revision:

Technical Support Team | british-gypsum.com

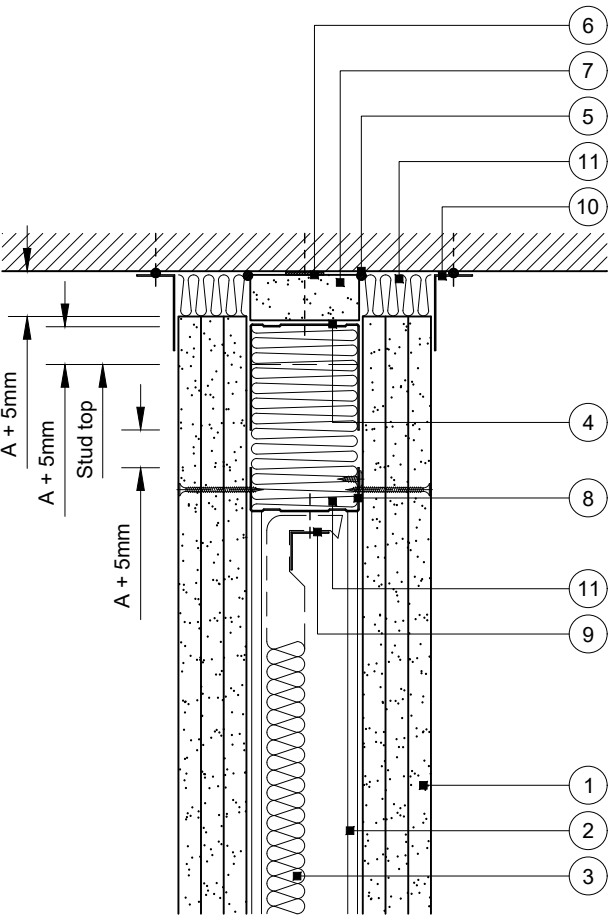
This drawing is provided to customers free of charge and the details shown are subject to the accuracy of the information provided to British Gypsum at the time the drawing was originally requested. The drawing should therefore be approved by the project design and management authority before use to ensure that it meets with their specific project requirements. It should also be read in conjunction with British Gypsum's current literature available at www.british-gypsum.com. Taping and finishing in accordance with British Gypsum's current recommendations is assumed (with the exception of FireCase system). Please note the drawing may show British Gypsum products fixed by or to products that are non-British Gypsum products/fixings please refer to Specifying Authority for specification details. This drawing is valid at the time of issue, please check with British Gypsum for the latest version. No duty of care is owed to the recipient or any third party and British Gypsum excludes all liability in respect of the details shown save where death or personal injury is caused due to British Gypsum's negligence or for fraud.

Standard Detail

This drawing provides general guidance where no performance criteria is given and site specific conditions are not taken into account

GypWall Single Frame

- 1 Three layers Gyproc plasterboard or Glasroc specialist board fixed with suitable British Gypsum screws at 300mm centres (200mm centres at external angles)
- 2 Gypframe 'C' studs at specified centres
- 3 Isover insulation where required
- 4 Gypframe Extra Deep Channel suitably fixed through board to soffit at 600mm centres (in two lines staggered by 300mm for 94mm and 148mm channels)
- 5 Gyproc Sealant for optimum sound insulation
- 6 Gyproc FireStrip
- 7 One channel width strip of 30mm Glasroc F FireCase
- 8 Gypframe Channel noggings with ends notched around studs and fixed with suitable British Gypsum wafer head screws, to receive uppermost board fixings (no fixings into head channel). Alternatively Gypframe stud noggings tightly fitted between studs
- 9 Gypframe steel angle or timber batten suitably fixed to nogging to retain insulation where required
- 10 Gypframe GA4 Steel Angle bedded on bead of Gyproc Sealant and fixed to soffit with suitable fire resistant fixings at 600mm centres
- 11 Stone mineral wool 100kg/m³ minimum density by others



DEFLECTION (VERTICAL) HEAD DESIGN

DEFLECTION DIM. A	DROPPED SOFFIT NOTE 7	CHANNEL NOTE 4	CLOAKING ELEMENT NOTE 10
1-15mm	One 30mm Glasroc F FireCase	EDC	GA4



Important information

Fire resistance BS EN 1364-1

- Estimated 180 minutes through partition subject to specification

Deflection head

Downward (vertical) movement

Rev. A 01.08.22 Annotation update (MBH)

Title: GypWall Single Frame
'C' studs and three layers board
Standard details read with project specification

Scale at A4: 1:5
Date: February 2022
Dwg No.: ST-121-Z1L3-11

Drawn: MBH
Approved: MRC
Revision: A

Technical Support Team | british-gypsum.com

This drawing is provided to customers free of charge and the details shown are subject to the accuracy of the information provided to British Gypsum at the time the drawing was originally requested. The drawing should therefore be approved by the project design and management authority before use to ensure that it meets with their specific project requirements. It should also be read in conjunction with British Gypsum's current literature available at www.british-gypsum.com. Taping and finishing in accordance with British Gypsum's current recommendations is assumed (with the exception of FireCase system). Please note the drawing may show British Gypsum products fixed by or to products that are non-British Gypsum products/fixings please refer to Specifying Authority for specification details. This drawing is valid at the time of issue, please check with British Gypsum for the latest version. No duty of care is owed to the recipient or any third party and British Gypsum excludes all liability in respect of the details shown save where death or personal injury is caused due to British Gypsum's negligence or for fraud.