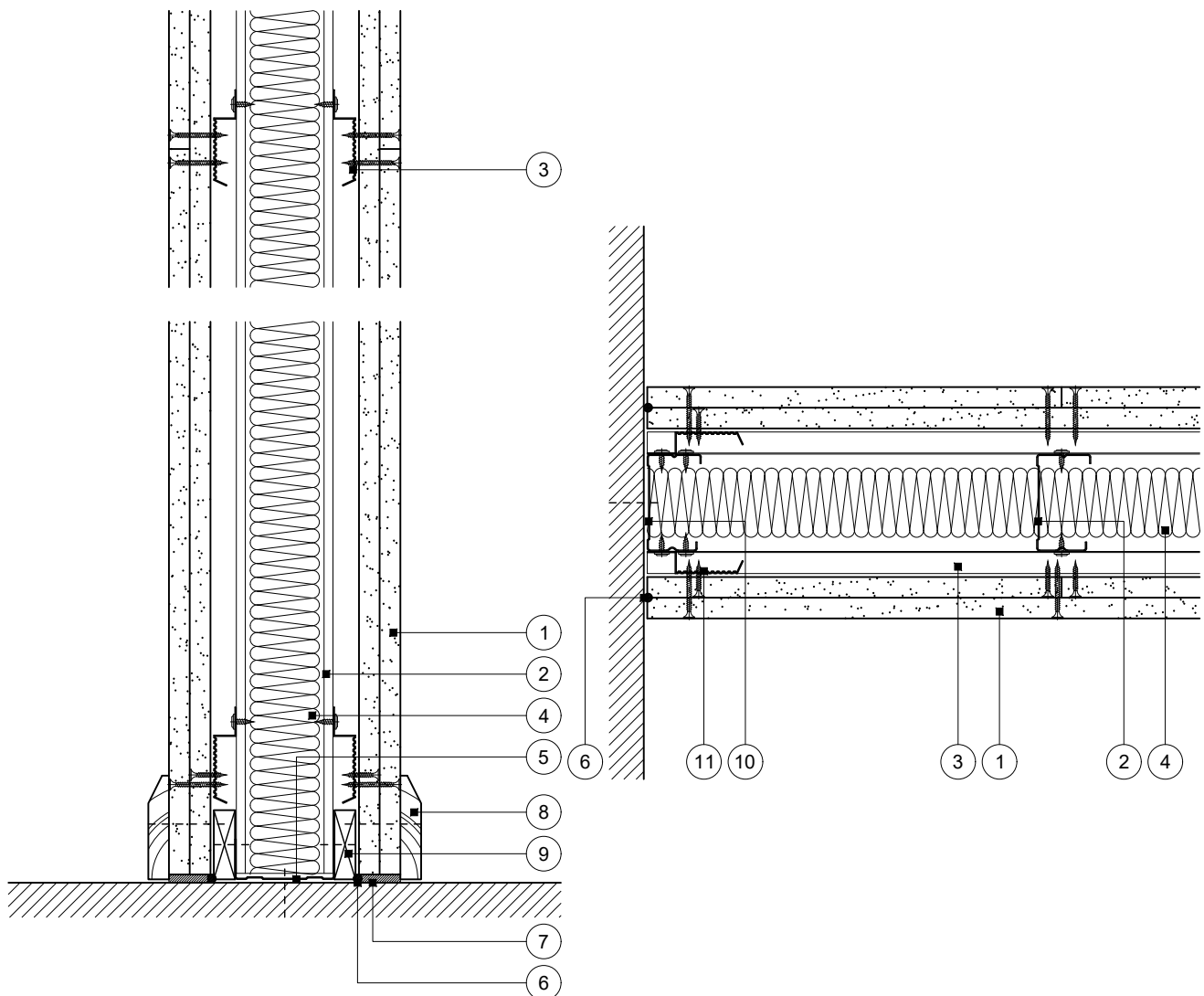


Standard Detail

This drawing provides general guidance where no performance criteria is given and site specific conditions are not taken into account

GypWall Resilient

- 1 Two layers Gyproc plasterboard or Glasroc specialist board fixed with suitable British Gypsum screws at 300mm centres (200mm centres at external angles)
- 2 Gyproframe 'C' studs at specified centres
- 3 Horizontal Gyproframe RB1 Resilient Bars at specified centres fixed to all studs with suitable British Gypsum wafer head screws
- 4 Isover insulation where required
- 5 Gyproframe Channel suitably fixed to floor at 600mm centres (in two lines staggered by 300mm for 94mm and 148mm channels). Deep Channel for heights between 4200mm and 8000mm
- 6 Gyproc Sealant for optimum sound insulation
- 7 Gyproc jointing material bulk fill where gap exceeds 5mm
- 8 Indicative skirting
- 9 15 x 50mm timber packer suitably fixed to metal framework
- 10 Gyproframe 'C' stud suitably fixed to wall at 600mm centres (in two lines staggered by 300mm for 92mm and 146mm studs)
- 11 Short lengths of Gyproframe RB1 Resilient Bar between horizontal lengths fixed to studs with suitable British Gypsum wafer head screws



Base and horizontal board joint

Wall abutment

Title: GypWall Resilient
'C' studs with resilient bars two sides and two layers board
Standard details read with project specification

Scale at A4: 1:5
Date: October 2021
Dwg No.: ST-124-Z5L2-01

Drawn: MRC
Approved: DRM
Revision:

Technical Support Team | british-gypsum.com

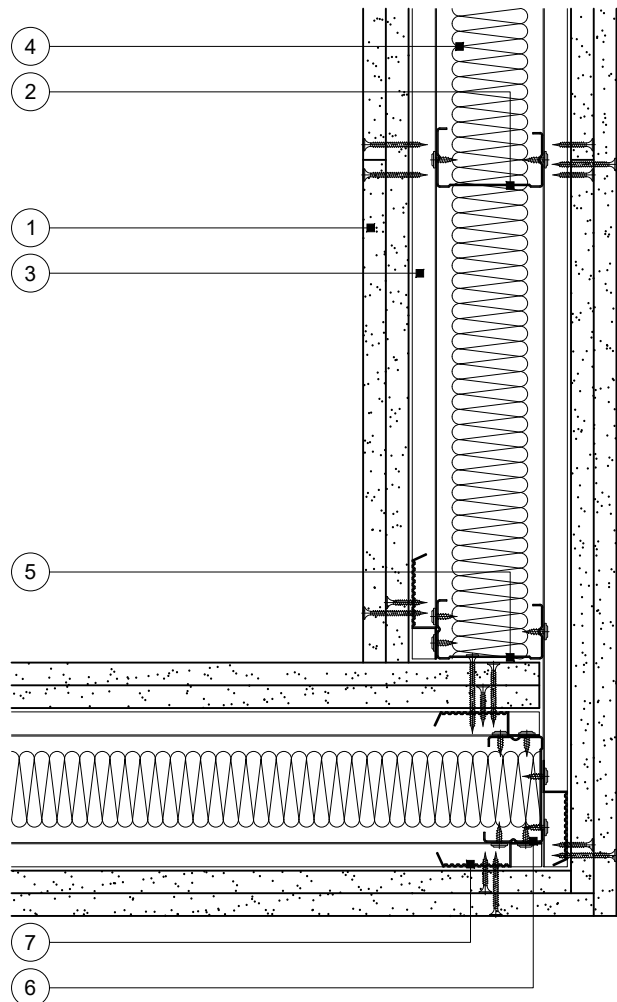
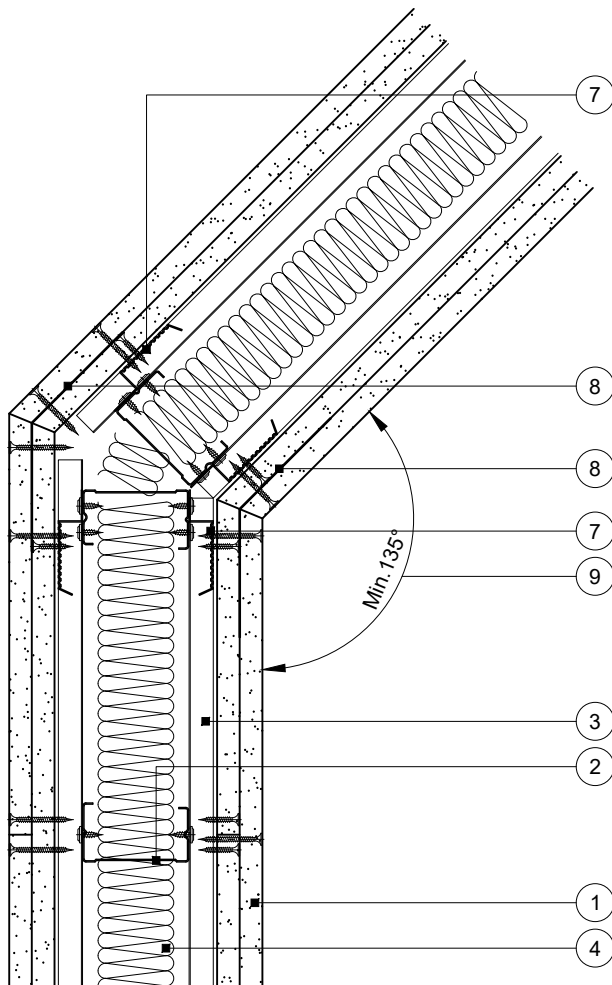
This drawing is provided to customers free of charge and the details shown are subject to the accuracy of the information provided to British Gypsum at the time the drawing was originally requested. The drawing should therefore be approved by the project design and management authority before use to ensure that it meets with their specific project requirements. It should also be read in conjunction with British Gypsum's current literature available at www.british-gypsum.com. Taping and finishing in accordance with British Gypsum's current recommendations is assumed (with the exception of FireCase system). Please note the drawing may show British Gypsum products fixed by or to products that are non-British Gypsum products/fixings please refer to Specifying Authority for specification details. This drawing is valid at the time of issue, please check with British Gypsum for the latest version. No duty of care is owed to the recipient or any third party and British Gypsum excludes all liability in respect of the details shown save where death or personal injury is caused due to British Gypsum's negligence or for fraud.

Standard Detail

This drawing provides general guidance where no performance criteria is given and site specific conditions are not taken into account

GypWall Resilient

- 1 Two layers Gyproc plasterboard or Glasroc specialist board fixed with suitable British Gypsum screws at 300mm centres (200mm centres at external angles)
- 2 Gypframe 'C' studs at specified centres
- 3 Horizontal Gypframe RB1 Resilient Bars at specified centres fixed to all studs with suitable British Gypsum wafer head screws
- 4 Isover insulation where required
- 5 Gypframe 'C' stud fixed through board to resilient bars with suitable British Gypsum screws at 600mm centres (in two lines for 92mm and 146mm studs)
- 6 Gypframe 'C' stud at junction
- 7 Short lengths of Gypframe RB1 Resilient Bar between horizontal lengths fixed to studs with suitable British Gypsum wafer head screws
- 8 Gypframe GA6 Splayed Angle to receive outer layer board fixings
- 9 Minimum angle ensures Gypframe GA6 Splayed Angle is fixed to studs at external angle



Splayed angle

Corner

Title: GypWall Resilient
'C' studs with resilient bars two sides and two layers board
Standard details read with project specification

Scale at A4: 1:5
Date: October 2021
Dwg No.: ST-124-Z5L2-02

Drawn: MRC
Approved: DRM
Revision:

Technical Support Team | british-gypsum.com

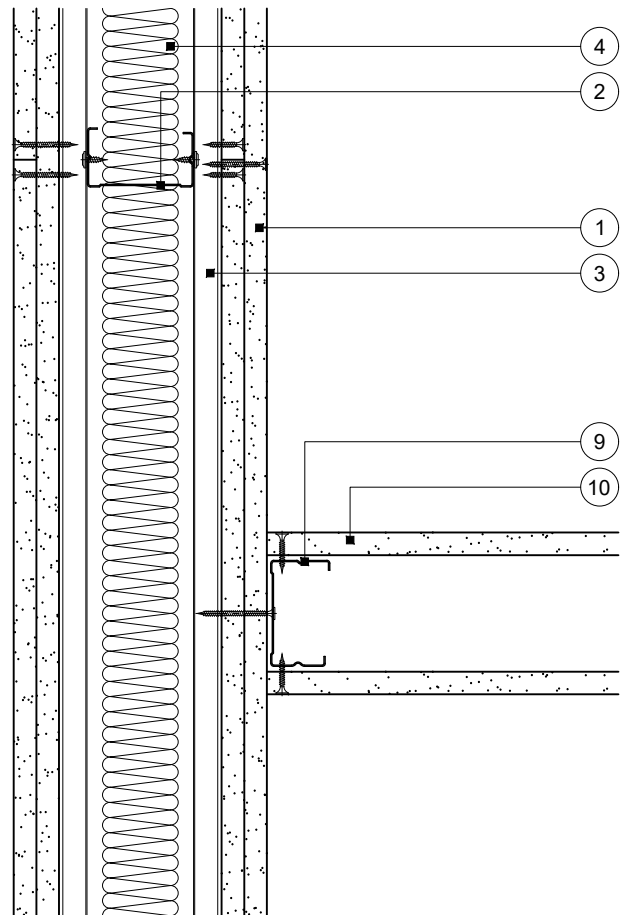
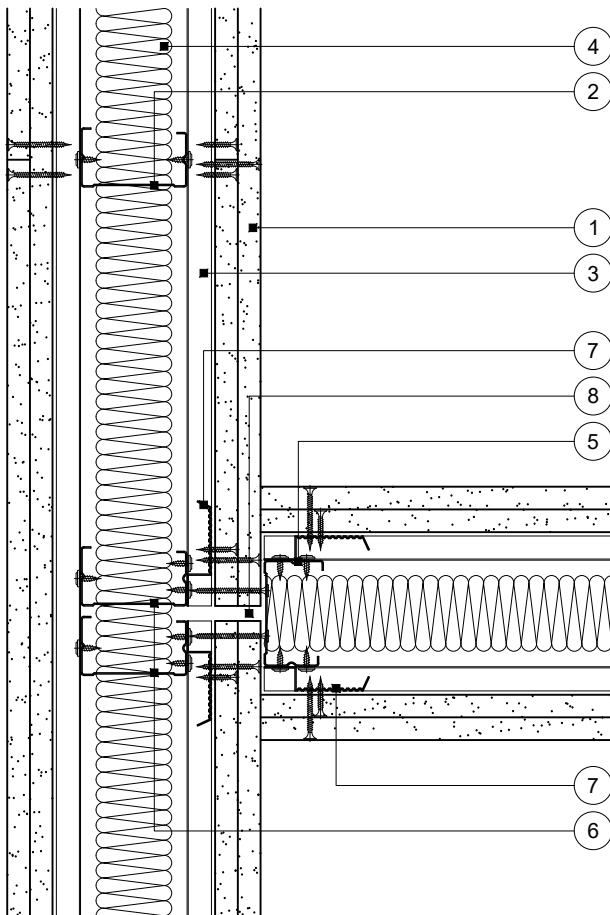
This drawing is provided to customers free of charge and the details shown are subject to the accuracy of the information provided to British Gypsum at the time the drawing was originally requested. The drawing should therefore be approved by the project design and management authority before use to ensure that it meets with their specific project requirements. It should also be read in conjunction with British Gypsum's current literature available at www.british-gypsum.com. Taping and finishing in accordance with British Gypsum's current recommendations is assumed (with the exception of FireCase system). Please note the drawing may show British Gypsum products fixed by or to products that are non-British Gypsum products/fixings please refer to Specifying Authority for specification details. This drawing is valid at the time of issue, please check with British Gypsum for the latest version. No duty of care is owed to the recipient or any third party and British Gypsum excludes all liability in respect of the details shown save where death or personal injury is caused due to British Gypsum's negligence or for fraud.

Standard Detail

This drawing provides general guidance where no performance criteria is given and site specific conditions are not taken into account

GypWall Resilient

- 1 Two layers Gyproc plasterboard or Glasroc specialist board fixed with suitable British Gypsum screws at 300mm centres (200mm centres at external angles)
- 2 Gyproframe 'C' studs at specified centres
- 3 Horizontal Gyproframe RB1 Resilient Bars at specified centres fixed to all studs with suitable British Gypsum wafer head screws
- 4 Isover insulation where required
- 5 Gyproframe 'C' stud fixed through board to resilient bars with suitable British Gypsum screws at 600mm centres in two lines
- 6 Additional Gyproframe 'C' studs at junction
- 7 Short lengths of Gyproframe RB1 Resilient Bar between horizontal lengths fixed to studs with suitable British Gypsum wafer head screws
- 8 Nominal 10mm gap between boards
- 9 Gyproframe 'C' stud fixed through board to resilient bars with suitable British Gypsum screws at 600mm centres (in two lines for 92mm and 146mm studs)
- 10 One layer Gyproc plasterboard or Glasroc specialist board fixed with suitable British Gypsum screws at 300mm centres (200mm centres at external angles)



T-junction

T-junction with other partition

Title: GypWall Resilient
'C' studs with resilient bars two sides and two layers board
Standard details read with project specification

Scale at A4: 1:5
Date: October 2021
Dwg No.: ST-124-Z5L2-03

Drawn: MRC
Approved: DRM
Revision:

Technical Support Team | british-gypsum.com

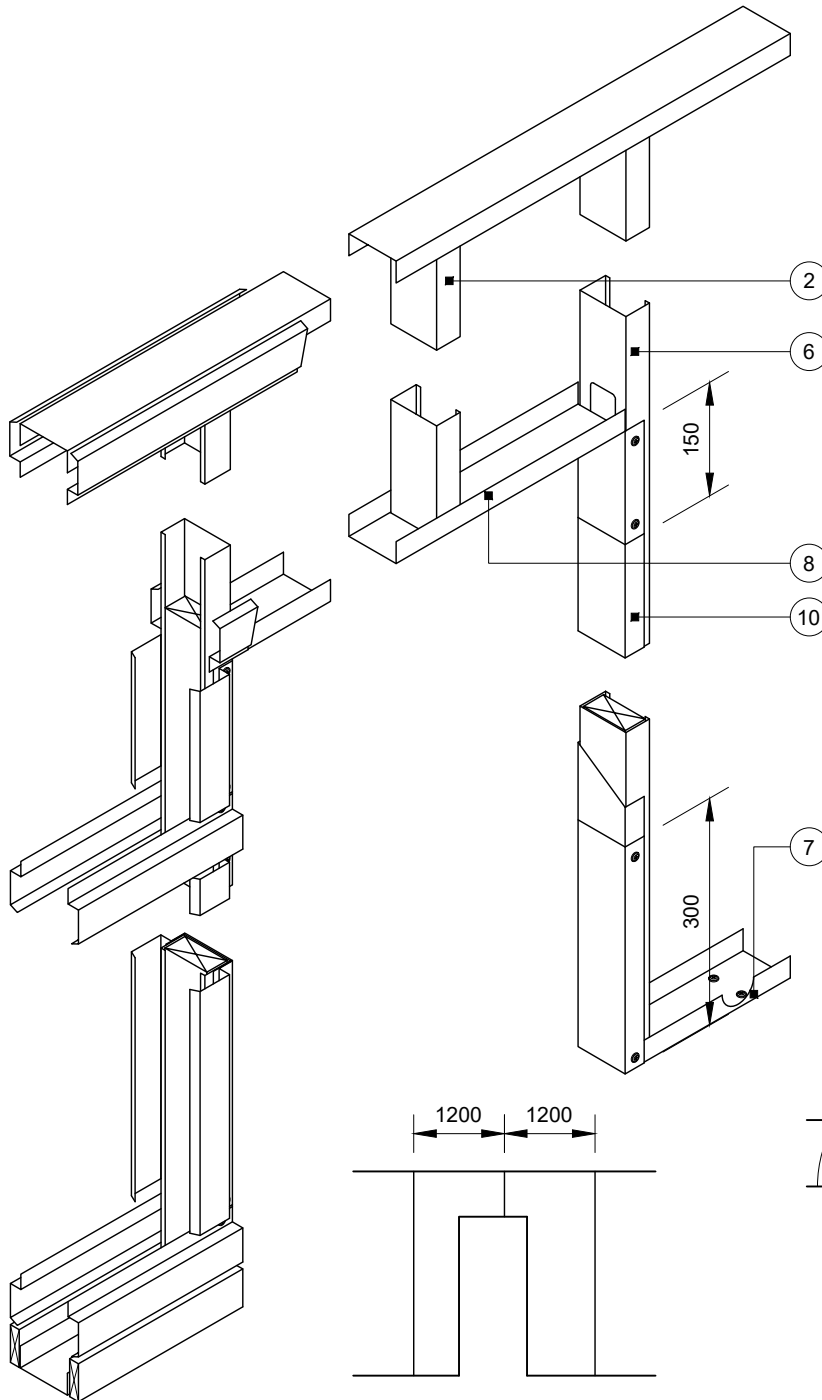
This drawing is provided to customers free of charge and the details shown are subject to the accuracy of the information provided to British Gypsum at the time the drawing was originally requested. The drawing should therefore be approved by the project design and management authority before use to ensure that it meets with their specific project requirements. It should also be read in conjunction with British Gypsum's current literature available at www.british-gypsum.com. Taping and finishing in accordance with British Gypsum's current recommendations is assumed (with the exception of FireCase system). Please note the drawing may show British Gypsum products fixed by or to products that are non-British Gypsum products/fixings please refer to Specifying Authority for specification details. This drawing is valid at the time of issue, please check with British Gypsum for the latest version. No duty of care is owed to the recipient or any third party and British Gypsum excludes all liability in respect of the details shown save where death or personal injury is caused due to British Gypsum's negligence or for fraud.

Standard Detail

This drawing provides general guidance where no performance criteria is given and site specific conditions are not taken into account

GypWall Resilient

Advice should be sought from the door manufacturer or installer prior to construction of this detail

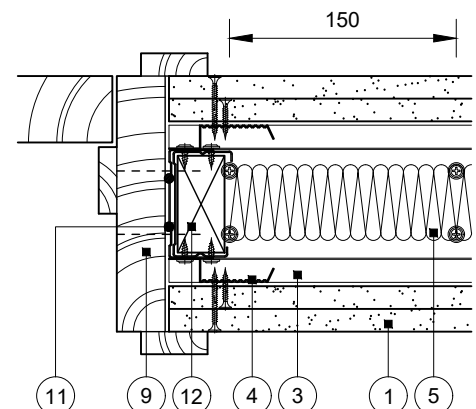


Partition elevation

Door opening width up to 1200mm

Maximum door weight 60kg to BS 5234: Parts 1 & 2: 1992 - Heavy and Severe Duty

- 1 Two layers Gyproc plasterboard or Glasroc specialist board fixed with suitable British Gypsum screws at 300mm centres (200mm centres at external angles)
- 2 Gyproframe 'C' studs at specified centres to maintain stud module
- 3 Horizontal Gyproframe RB1 Resilient Bars at 600mm centres fixed to all studs with British Gypsum Wafer Head Drywall Screws
- 4 Short lengths of Gyproframe RB1 Resilient Bar between horizontal lengths fixed to studs with suitable British Gypsum wafer head screws
- 5 Isover insulation where required
- 6 Gyproframe 'C' stud at jamb
- 7 Gyproframe Channel suitably fixed to floor with two pairs of fixings at 150mm centres (four total) and at 600mm centres (in two lines staggered by 300mm for 94mm and 148mm channels) thereafter. Channel cut and bent to extend 300mm up stud and fixed through both flanges with two suitable British Gypsum wafer head screws
- 8 Gyproframe Channel cut and bent to extend 150mm down stud and fixed through both flanges with two suitable British Gypsum wafer head screws or crimped
- 9 Indicative timber door frame and architrave
- 10 Gyproframe Channel sleeved over stud between returned channels at opening head and base
- 11 Suitable solvent based construction adhesive with instant grab by others
- 12 Optional indicative timber stud 64/86/140 x 30mm (to suit 70/92/146mm stud) to extend nominal 50mm above opening height



Title: GypWall Resilient
'C' studs with resilient bars two sides and two layers board
Standard details read with project specification

Scale at A4: 1:5 1:10
Date: October 2021
Dwg No.: ST-124-Z5L2-04

Drawn: MRC
Approved: DRM
Revision:

Technical Support Team | british-gypsum.com

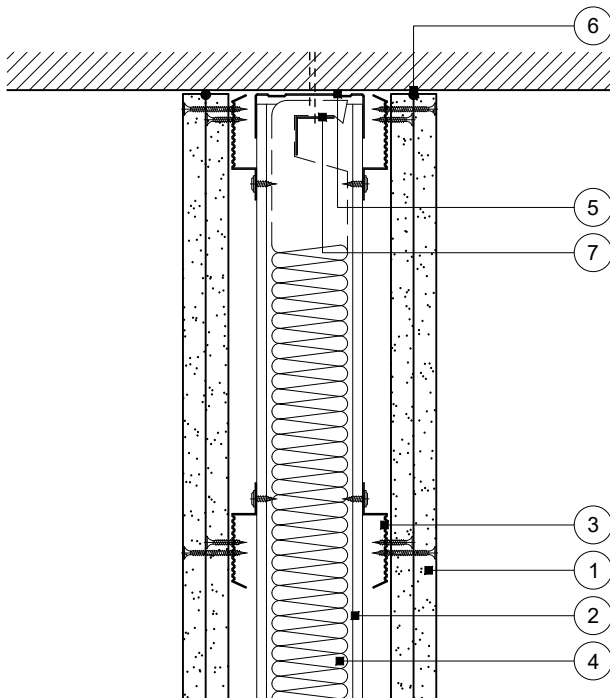
This drawing is provided to customers free of charge and the details shown are subject to the accuracy of the information provided to British Gypsum at the time the drawing was originally requested. The drawing should therefore be approved by the project design and management authority before use to ensure that it meets with their specific project requirements. It should also be read in conjunction with British Gypsum's current literature available at www.british-gypsum.com. Taping and finishing in accordance with British Gypsum's current recommendations is assumed (with the exception of FireCase system). Please note the drawing may show British Gypsum products fixed by or to products that are non-British Gypsum products/fixings please refer to Specifying Authority for specification details. This drawing is valid at the time of issue, please check with British Gypsum for the latest version. No duty of care is owed to the recipient or any third party and British Gypsum excludes all liability in respect of the details shown save where death or personal injury is caused due to British Gypsum's negligence or for fraud.

Standard Detail

This drawing provides general guidance where no performance criteria is given and site specific conditions are not taken into account

GypWall Resilient

- 1 Two layers Gyproc plasterboard or Glasroc specialist board fixed with suitable British Gypsum screws at 300mm centres (200mm centres at external angles)
- 2 Gypframe 'C' studs at specified centres
- 3 Horizontal Gypframe RB1 Resilient Bars at specified centres fixed to all studs with suitable British Gypsum wafer head screws
- 4 Isover insulation where required
- 5 Gypframe Channel suitably fixed to soffit at 600mm centres (in two lines staggered by 300mm for 94mm and 148mm channels). Deep Channel for heights between 4200mm and 8000mm
- 6 Gyproc Sealant for optimum sound insulation
- 7 Gypframe steel angle or timber batten suitably fixed to soffit to retain insulation where required



Head

No deflection allowance

Title: GypWall Resilient
'C' studs with resilient bars two sides and two layers board
Standard details read with project specification

Scale at A4: 1:5
Date: October 2021
Dwg No.: ST-124-Z5L2-05

Drawn: MRC
Approved: DRM
Revision:

Technical Support Team | british-gypsum.com

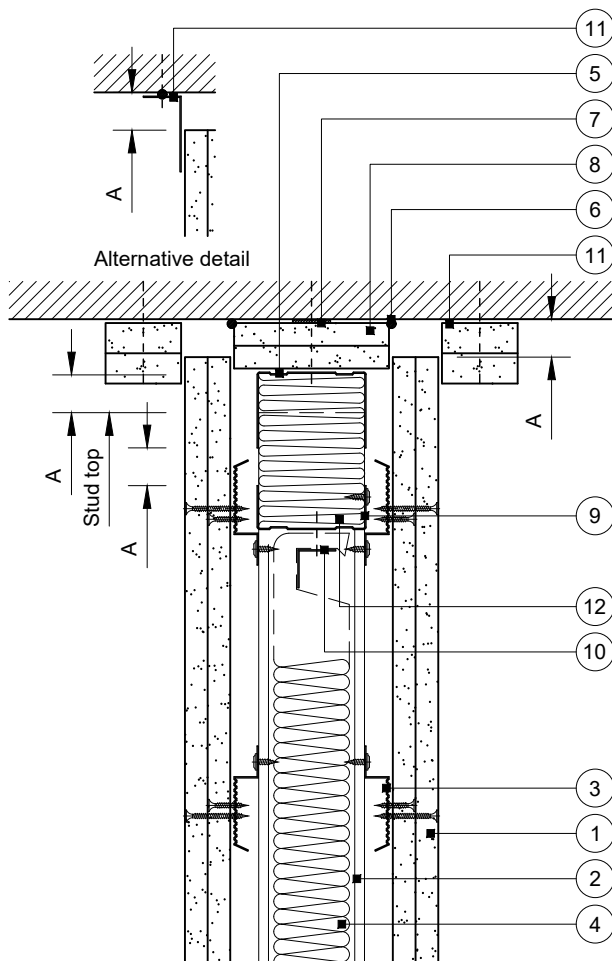
This drawing is provided to customers free of charge and the details shown are subject to the accuracy of the information provided to British Gypsum at the time the drawing was originally requested. The drawing should therefore be approved by the project design and management authority before use to ensure that it meets with their specific project requirements. It should also be read in conjunction with British Gypsum's current literature available at www.british-gypsum.com. Taping and finishing in accordance with British Gypsum's current recommendations is assumed (with the exception of FireCase system). Please note the drawing may show British Gypsum products fixed by or to products that are non-British Gypsum products/fixings please refer to Specifying Authority for specification details. This drawing is valid at the time of issue, please check with British Gypsum for the latest version. No duty of care is owed to the recipient or any third party and British Gypsum excludes all liability in respect of the details shown save where death or personal injury is caused due to British Gypsum's negligence or for fraud.

Standard Detail

This drawing provides general guidance where no performance criteria is given and site specific conditions are not taken into account

GypWall Resilient

- Two layers Gyproc plasterboard or Glasroc specialist board fixed with suitable British Gypsum screws at 300mm centres (200mm centres at external angles)
- Gypframe 'C' studs at specified centres
- Horizontal Gypframe RB1 Resilient Bars at specified centres fixed to all studs with suitable British Gypsum wafer head screws
- Isover insulation where required
- Gypframe Deep Channel or Extra Deep Channel (see table) suitably fixed through board to soffit at 600mm centres (in two lines staggered by 300mm for 94mm and 148mm channels)
- Gyproc Sealant for optimum sound insulation
- Gyproc FireStrip
- One or two channel width +30mm (ie. 72+30mm) strip(s) of board (see table). Two strips pre-fixed to channel with suitable British Gypsum screws at 600mm centres
- Gypframe Channel noggings with ends notched around studs and fixed with suitable British Gypsum wafer head screws, to receive uppermost board fixings (no fixings into head channel)
- Gypframe steel angle or timber batten suitably fixed to nogging to retain insulation where required
- Two 50mm width strips of Glasroc F FireCase fixed to soffit with suitable fire resistant fixings at 600mm centres, or Gypframe GA4 Steel Angle bedded on bead of Gyproc Sealant and fixed to soffit with suitable fire resistant fixings at 600mm centres (see table)
- Stone mineral wool 33kg/m³ minimum density by others



DEFLECTION (VERTICAL) HEAD DESIGN

DEFLECTION DIM. A	DROPPED SOFFIT NOTE 8	CHANNEL NOTE 5	CLOAKING ELEMENT NOTE 11
1-15mm	One 19mm ^A or 20mm ^B	DC	Two 15mm ^B or GA4
16-20mm	Two 15mm ^B	DC	Two 15mm ^B
21-25mm	Two 15mm ^B	DC	Two 20mm ^B
26-30mm	Two 20mm ^B	DC	Two 20mm ^B
31-35mm	Two 20mm ^B	EDC	Two 25mm ^B
36-40mm	Two 25mm ^B	EDC	Two 25mm ^B
41-45mm	Two 25mm ^B	EDC	Two 30mm ^B
46-50mm	Two 30mm ^B	EDC	Two 30mm ^B

^A Gyproc CoreBoard
^B Glasroc F FireCase

Important information

Fire resistance BS EN 1364-1

- 90 or 120 minutes through partition subject to specification

Deflection head

Downward (vertical) movement

Rev. A 01.08.22 Annotation update (AJC)

Title: GypWall Resilient
'C' studs with resilient bars two sides and two layers board
Standard details read with project specification

Scale at A4: 1:5
Date: October 2021
Dwg No.: ST-124-Z5L2-09

Drawn: MRC
Approved: DRM
Revision: A

Technical Support Team | british-gypsum.com

This drawing is provided to customers free of charge and the details shown are subject to the accuracy of the information provided to British Gypsum at the time the drawing was originally requested. The drawing should therefore be approved by the project design and management authority before use to ensure that it meets with their specific project requirements. It should also be read in conjunction with British Gypsum's current literature available at www.british-gypsum.com. Taping and finishing in accordance with British Gypsum's current recommendations is assumed (with the exception of FireCase system). Please note the drawing may show British Gypsum products fixed by or to products that are non-British Gypsum products/fixings please refer to Specifying Authority for specification details. This drawing is valid at the time of issue, please check with British Gypsum for the latest version. No duty of care is owed to the recipient or any third party and British Gypsum excludes all liability in respect of the details shown save where death or personal injury is caused due to British Gypsum's negligence or for fraud.