

# Standard Detail

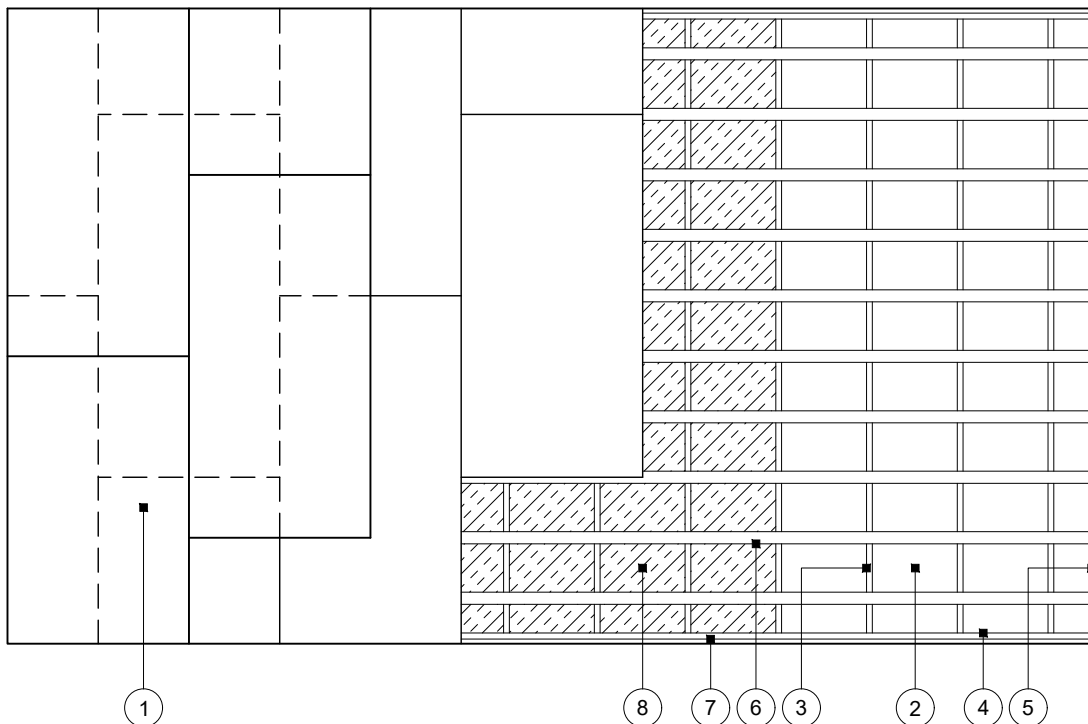
This drawing provides general guidance where no performance criteria is given and site specific conditions are not taken into account

## GypCeiling Shaft

- 1 Two layers Gyproc plasterboard fixed with suitable British Gypsum screws at 230mm centres in field of board and 150mm centres at board ends and ceiling perimeter
- 2 19mm Gyproc CoreBoard secured with Gypframe G102 Retaining Channel
- 3 Gypframe 146 TI 90 tabbed 'I' studs at 600mm centres fixed into channel through bottom flange with two suitable British Gypsum wafer head screws
- 4 Gypframe 148 EDC 80 Extra Deep Channel suitably fixed to wall at 600mm centres in two lines staggered by 300mm
- 5 Gypframe 146 TSC 90 Tabbed Starter Channel suitably fixed to wall at 600mm centres in two lines staggered by 300mm
- 6 Gypframe MF5 Ceiling Sections at max. 450mm centres fixed to each stud with two suitable British Gypsum wafer head screws
- 7 Gypframe MF6 Perimeter Channel suitably fixed to wall at 600mm centres
- 8 Isover insulation where required

### ! Important information

This construction must not be used for material storage or access for personnel



## Lower frame reflected ceiling plan

**Title:** GypCeiling Shaft  
Twin frame 146mm 'I' studs and combined four layers board  
Standard details read with project specification

**Scale at A4:** 1:50  
**Date:** October 2021  
**Dwg No.:** ST-325-52L4-01

**Drawn:** MRC  
**Approved:** MBH  
**Revision:**

Technical Support Team | [british-gypsum.com](http://british-gypsum.com)

This drawing is provided to customers free of charge and the details shown are subject to the accuracy of the information provided to British Gypsum at the time the drawing was originally requested. The drawing should therefore be approved by the project design and management authority before use to ensure that it meets with their specific project requirements. It should also be read in conjunction with British Gypsum's current literature available at [www.british-gypsum.com](http://www.british-gypsum.com). Taping and finishing in accordance with British Gypsum's current recommendations is assumed (with the exception of FireCase system). Please note the drawing may show British Gypsum products fixed by or to products that are non-British Gypsum products/fixings please refer to Specifying Authority for specification details. This drawing is valid at the time of issue, please check with British Gypsum for the latest version. No duty of care is owed to the recipient or any third party and British Gypsum excludes all liability in respect of the details shown save where death or personal injury is caused due to British Gypsum's negligence or for fraud.

# Standard Detail

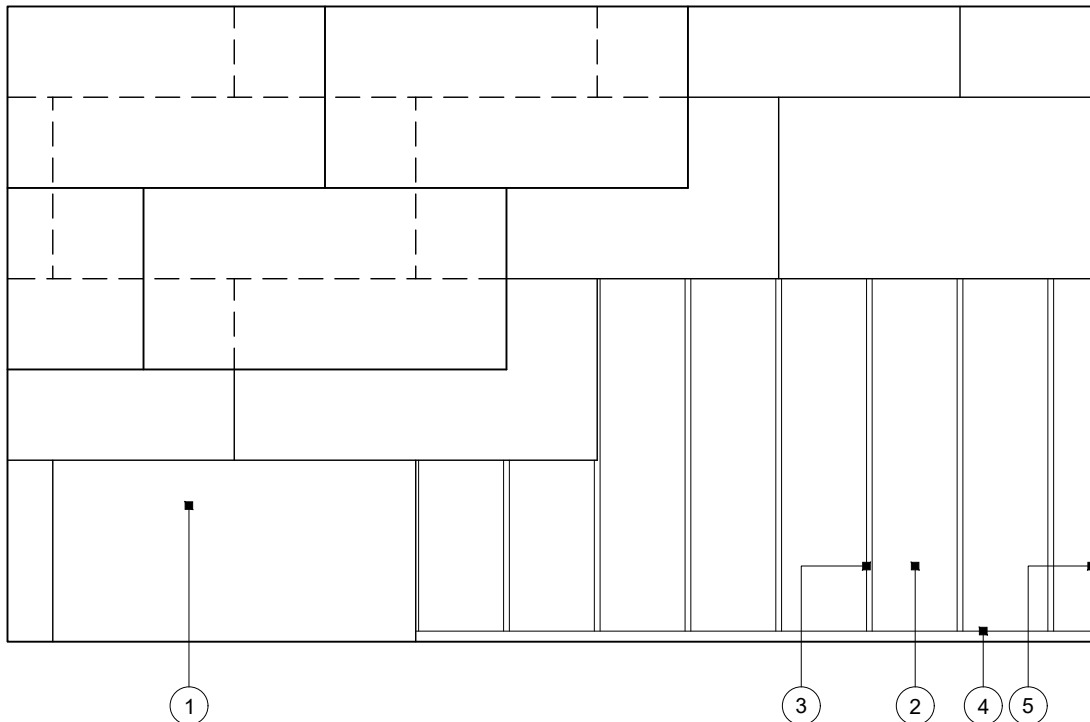
This drawing provides general guidance where no performance criteria is given and site specific conditions are not taken into account

## GypCeiling Shaft

- 1 Two layers Gyproc plasterboard fixed with suitable British Gypsum screws at 230mm centres in field of board and 150mm centres at board ends and ceiling perimeter
- 2 19mm Gyproc CoreBoard secured with Gypframe G102 Retaining Channel
- 3 Gypframe 146 TI 90 tabbed 'I' studs at 600mm centres fixed into channel through bottom flange with two suitable British Gypsum wafer head screws
- 4 Gypframe 148 EDC 80 Extra Deep Channel suitably fixed to wall at 600mm centres in two lines staggered by 300mm
- 5 Gypframe 146 TSC 90 Tabbed Starter Channel suitably fixed to wall at 600mm centres in two lines staggered by 300mm

### ! Important information

This construction must not be used for material storage or access for personnel



## Upper frame reflected ceiling plan

**Title:** GypCeiling Shaft  
Twin frame 146mm 'I' studs and combined four layers board  
Standard details read with project specification

**Scale at A4:** 1:50  
**Date:** October 2021  
**Dwg No.:** ST-325-52L4-02

**Drawn:** MRC  
**Approved:** MBH  
**Revision:**

Technical Support Team | [british-gypsum.com](http://british-gypsum.com)

This drawing is provided to customers free of charge and the details shown are subject to the accuracy of the information provided to British Gypsum at the time the drawing was originally requested. The drawing should therefore be approved by the project design and management authority before use to ensure that it meets with their specific project requirements. It should also be read in conjunction with British Gypsum's current literature available at [www.british-gypsum.com](http://www.british-gypsum.com). Taping and finishing in accordance with British Gypsum's current recommendations is assumed (with the exception of FireCase system). Please note the drawing may show British Gypsum products fixed by or to products that are non-British Gypsum products/fixings please refer to Specifying Authority for specification details. This drawing is valid at the time of issue, please check with British Gypsum for the latest version. No duty of care is owed to the recipient or any third party and British Gypsum excludes all liability in respect of the details shown save where death or personal injury is caused due to British Gypsum's negligence or for fraud.

# Standard Detail

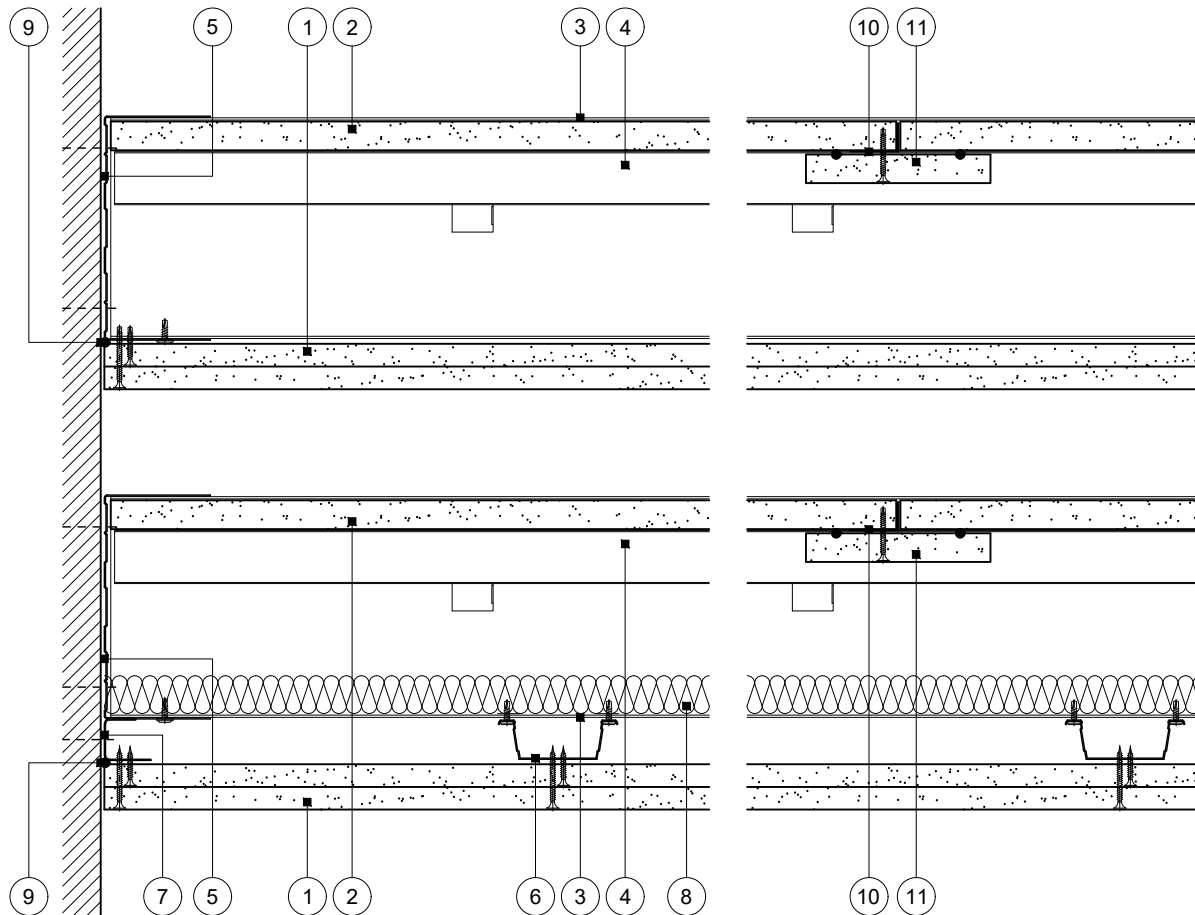
This drawing provides general guidance where no performance criteria is given and site specific conditions are not taken into account

## GypCeiling Shaft

- 1 Two layers Gyproc plasterboard fixed with suitable British Gypsum screws at 230mm centres in field of board and 150mm centres at board ends and ceiling perimeter
- 2 19mm Gyproc CoreBoard
- 3 Gypframe 146 TI 90 tabbed 'I' studs at 600mm centres fixed into channel through bottom flange with two suitable British Gypsum wafer head screws
- 4 Gypframe G102 Retaining Channel
- 5 Gypframe 148 EDC 80 Extra Deep Channel suitably fixed to wall at 600mm centres in two lines staggered by 300mm
- 6 Gypframe MF5 Ceiling Sections at max. 450mm centres fixed to each stud with two suitable British Gypsum wafer head screws
- 7 Gypframe MF6 Perimeter Channel suitably fixed to wall at 600mm centres
- 8 Isover insulation where required
- 9 Gyproc Sealant for optimum sound insulation
- 10 Gypframe GA3 Steel Angle at board end joint and secured by retaining channel at each end
- 11 122mm wide strip of 19mm Gyproc CoreBoard bedded on two beads of Gyproc Sealant and fixed to angle with three suitable British Gypsum screws

### ! Important information

This construction must not be used for material storage or access for personnel



### Perimeter 1

Studs perpendicular to wall

### Coreboard joint

**Title:** GypCeiling Shaft  
Twin frame 146mm 'I' studs and combined four layers board  
Standard details read with project specification

**Scale at A4:** 1:5  
**Date:** October 2021  
**Dwg No.:** ST-325-52L4-03

**Drawn:** MRC  
**Approved:** MBH  
**Revision:**

Technical Support Team | british-gypsum.com

This drawing is provided to customers free of charge and the details shown are subject to the accuracy of the information provided to British Gypsum at the time the drawing was originally requested. The drawing should therefore be approved by the project design and management authority before use to ensure that it meets with their specific project requirements. It should also be read in conjunction with British Gypsum's current literature available at [www.british-gypsum.com](http://www.british-gypsum.com). Taping and finishing in accordance with British Gypsum's current recommendations is assumed (with the exception of FireCase system). Please note the drawing may show British Gypsum products fixed by or to products that are non-British Gypsum products/fixings please refer to Specifying Authority for specification details. This drawing is valid at the time of issue, please check with British Gypsum for the latest version. No duty of care is owed to the recipient or any third party and British Gypsum excludes all liability in respect of the details shown save where death or personal injury is caused due to British Gypsum's negligence or for fraud.

# Standard Detail

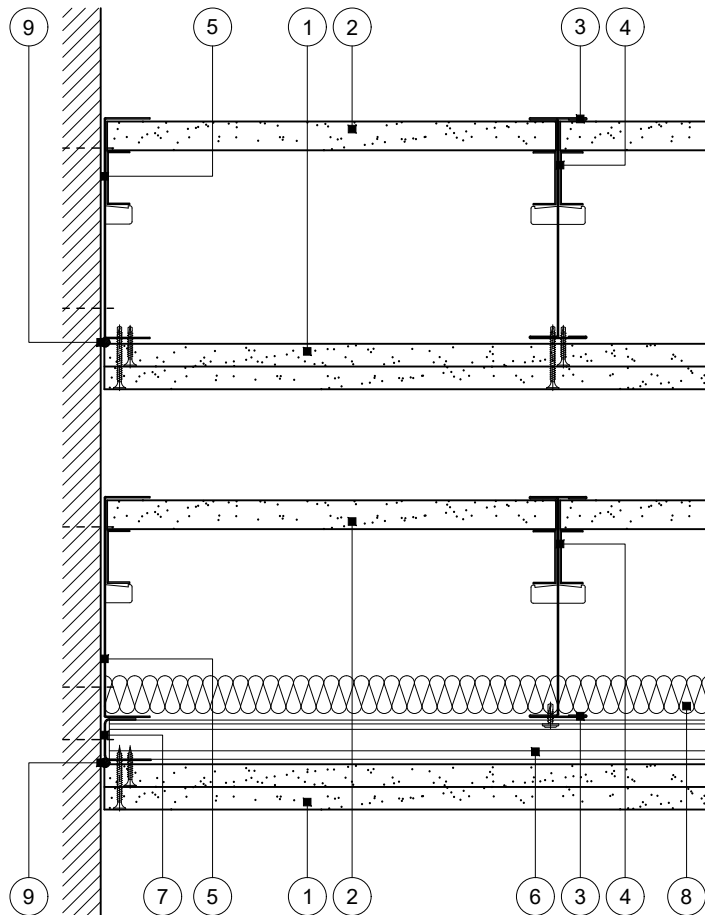
This drawing provides general guidance where no performance criteria is given and site specific conditions are not taken into account

## GypCeiling Shaft

- 1 Two layers Gyproc plasterboard fixed with suitable British Gypsum screws at 230mm centres in field of board and 150mm centres at board ends and ceiling perimeter
- 2 19mm Gyproc CoreBoard
- 3 Gypframe 146 TI 90 tabbed 'I' studs at 600mm centres fixed into channel through bottom flange with two suitable British Gypsum wafer head screws
- 4 Gypframe G102 Retaining Channel
- 5 Gypframe 146 TSC 90 Tabbed Starter Channel suitably fixed to wall at 600mm centres in two lines staggered by 300mm
- 6 Gypframe MF5 Ceiling Sections at max. 450mm centres fixed to each stud with two suitable British Gypsum wafer head screws
- 7 Gypframe MF6 Perimeter Channel suitably fixed to wall at 600mm centres
- 8 Isover insulation where required
- 9 Gyproc Sealant for optimum sound insulation

### ! Important information

This construction must not be used for material storage or access for personnel



### Perimeter 2

Studs parallel to wall

**Title:** GypCeiling Shaft  
Twin frame 146mm 'I' studs and combined four layers board  
Standard details read with project specification

**Scale at A4:** 1:5  
**Date:** October 2021  
**Dwg No.:** ST-325-52L4-04

**Drawn:** MRC  
**Approved:** MBH  
**Revision:**

Technical Support Team | british-gypsum.com

This drawing is provided to customers free of charge and the details shown are subject to the accuracy of the information provided to British Gypsum at the time the drawing was originally requested. The drawing should therefore be approved by the project design and management authority before use to ensure that it meets with their specific project requirements. It should also be read in conjunction with British Gypsum's current literature available at [www.british-gypsum.com](http://www.british-gypsum.com). Taping and finishing in accordance with British Gypsum's current recommendations is assumed (with the exception of FireCase system). Please note the drawing may show British Gypsum products fixed by or to products that are non-British Gypsum products/fixings please refer to Specifying Authority for specification details. This drawing is valid at the time of issue, please check with British Gypsum for the latest version. No duty of care is owed to the recipient or any third party and British Gypsum excludes all liability in respect of the details shown save where death or personal injury is caused due to British Gypsum's negligence or for fraud.