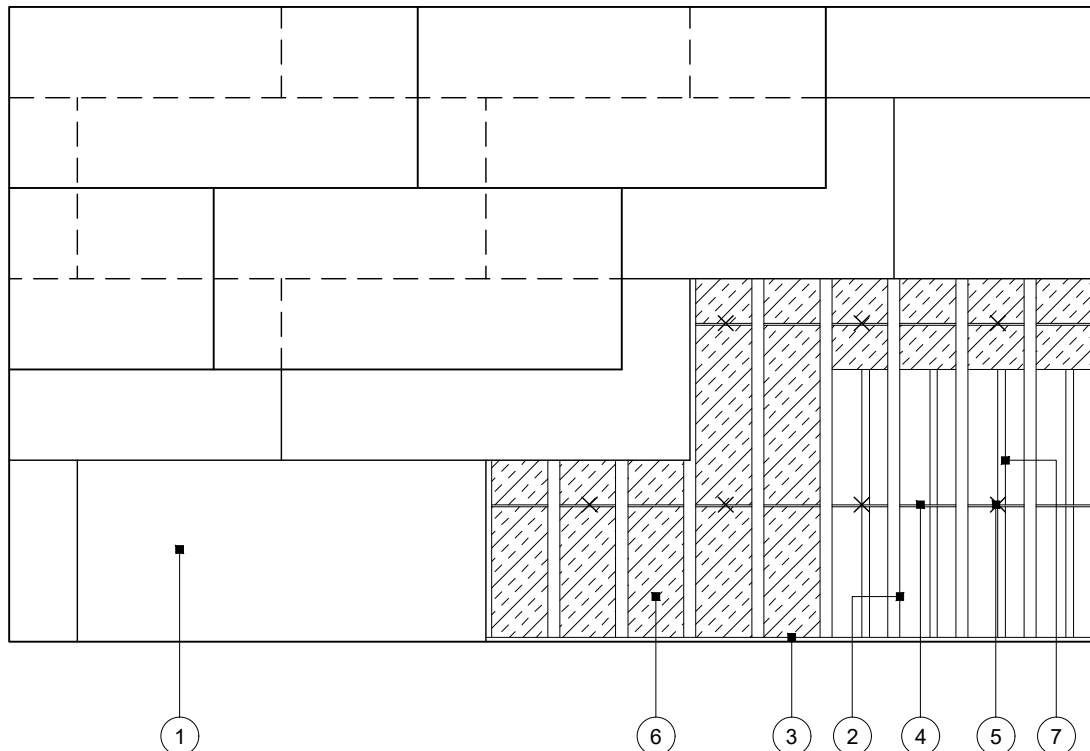


Standard Detail

This drawing provides general guidance where no performance criteria is given and site specific conditions are not taken into account

GypCeiling MF

- 1 Three layers Gyproc plasterboard or Glasroc specialist board fixed with suitable British Gypsum screws at 230mm centres in field of board and 150mm centres at board ends
- 2 Gypframe MF5 Ceiling Sections at max. 450mm centres fixed to each MF7 with two suitable British Gypsum wafer head screws or MF9 Connecting Clip
- 3 Gypframe MF6 Perimeter Channel suitably fixed to wall at 600mm centres
- 4 Gypframe MF7 Primary Support Channels at specified centres
- 5 Gypframe FEA1 Steel Angle hangers at specified centres fixed to MF7 with two suitable British Gypsum wafer head screws and fixed to joists with two suitable British Gypsum screws (min. 35mm from bottom of joist)
- 6 Isover insulation where required
- 7 Timber joists



Reflected ceiling plan

Title: GypCeiling MF
Timber joist floor and three layers board
Standard details read with project specification

Scale at A4: 1:50
Date: January 2022
Dwg No.: ST-321-HAL3-01

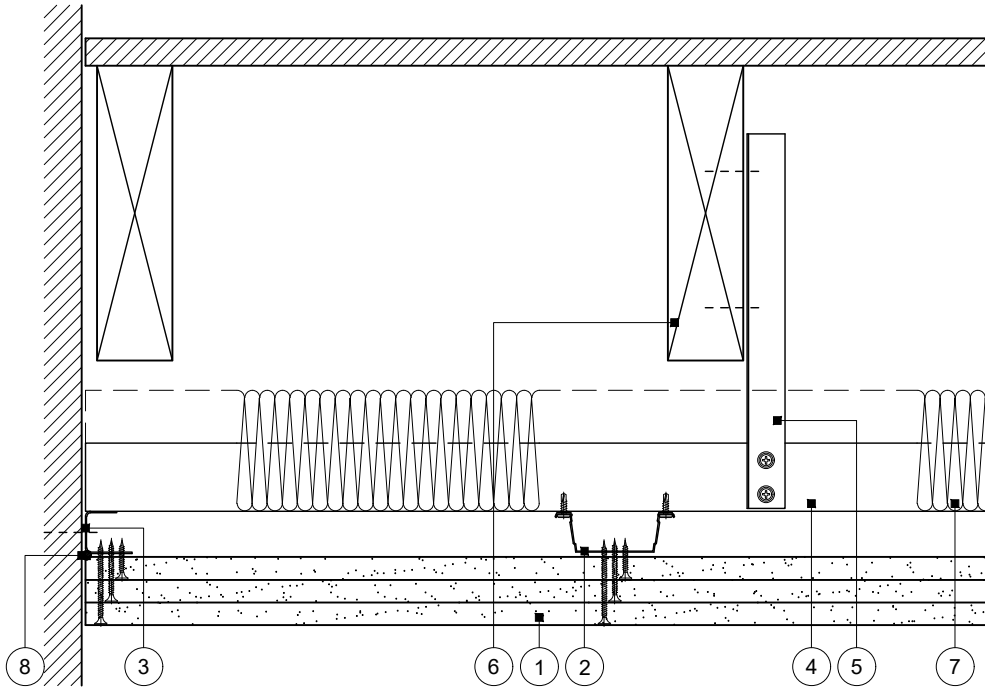
Drawn: MBH
Approved: DRM
Revision:

Technical Support Team | british-gypsum.com

Standard Detail

This drawing provides general guidance where no performance criteria is given and site specific conditions are not taken into account

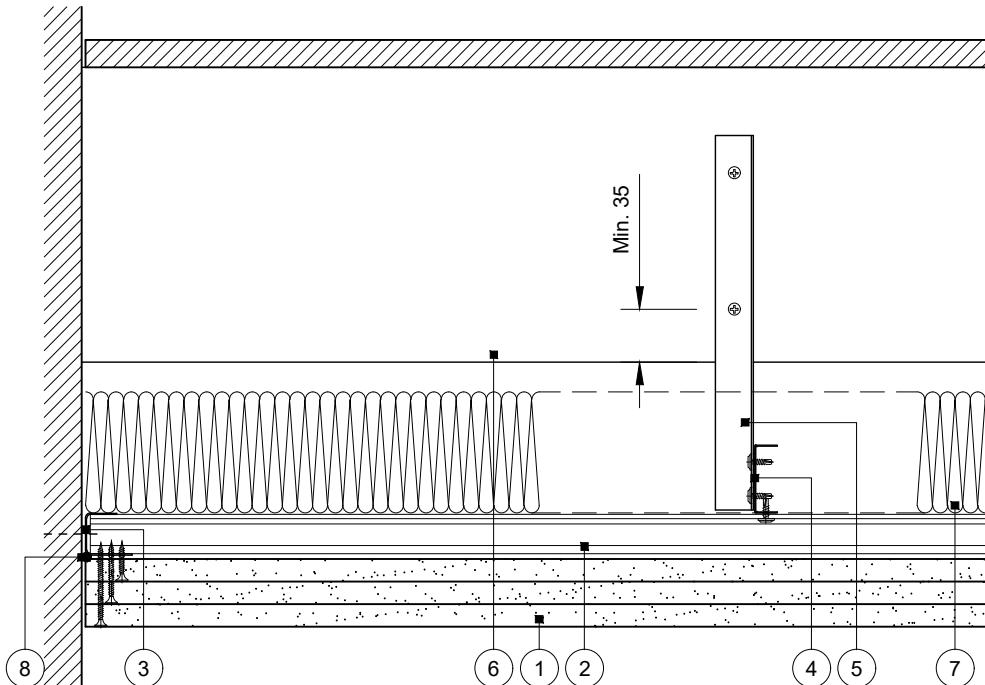
GypCeiling MF



- 1 Three layers Gyproc plasterboard or Glasroc specialist board fixed with suitable British Gypsum screws at 230mm centres in field of board and 150mm centres at board ends
- 2 Gypframe MF5 Ceiling Sections at max. 450mm centres fixed to each MF7 with two suitable British Gypsum wafer head screws or MF9 Connecting Clip
- 3 Gypframe MF6 Perimeter Channel suitably fixed to wall at 600mm centres
- 4 Gypframe MF7 Primary Support Channels at specified centres
- 5 Gypframe FEA1 Steel Angle hangers at specified centres fixed to MF7 with two suitable British Gypsum wafer head screws and fixed to joists with two suitable British Gypsum screws (min. 35mm from bottom of joist)
- 6 Timber joist floor with wood board flooring
- 7 Isover insulation where required
- 8 Gyproc Sealant for optimum sound insulation

Perimeter 1

MF5 parallel to wall



Perimeter 2

MF5 perpendicular to wall

Title: GypCeiling MF
Timber joist floor and three layers board
Standard details read with project specification

Scale at A4: 1:5
Date: January 2022
Dwg No.: ST-321-HAL3-02

Drawn: MBH
Approved: DRM
Revision:

Technical Support Team | british-gypsum.com