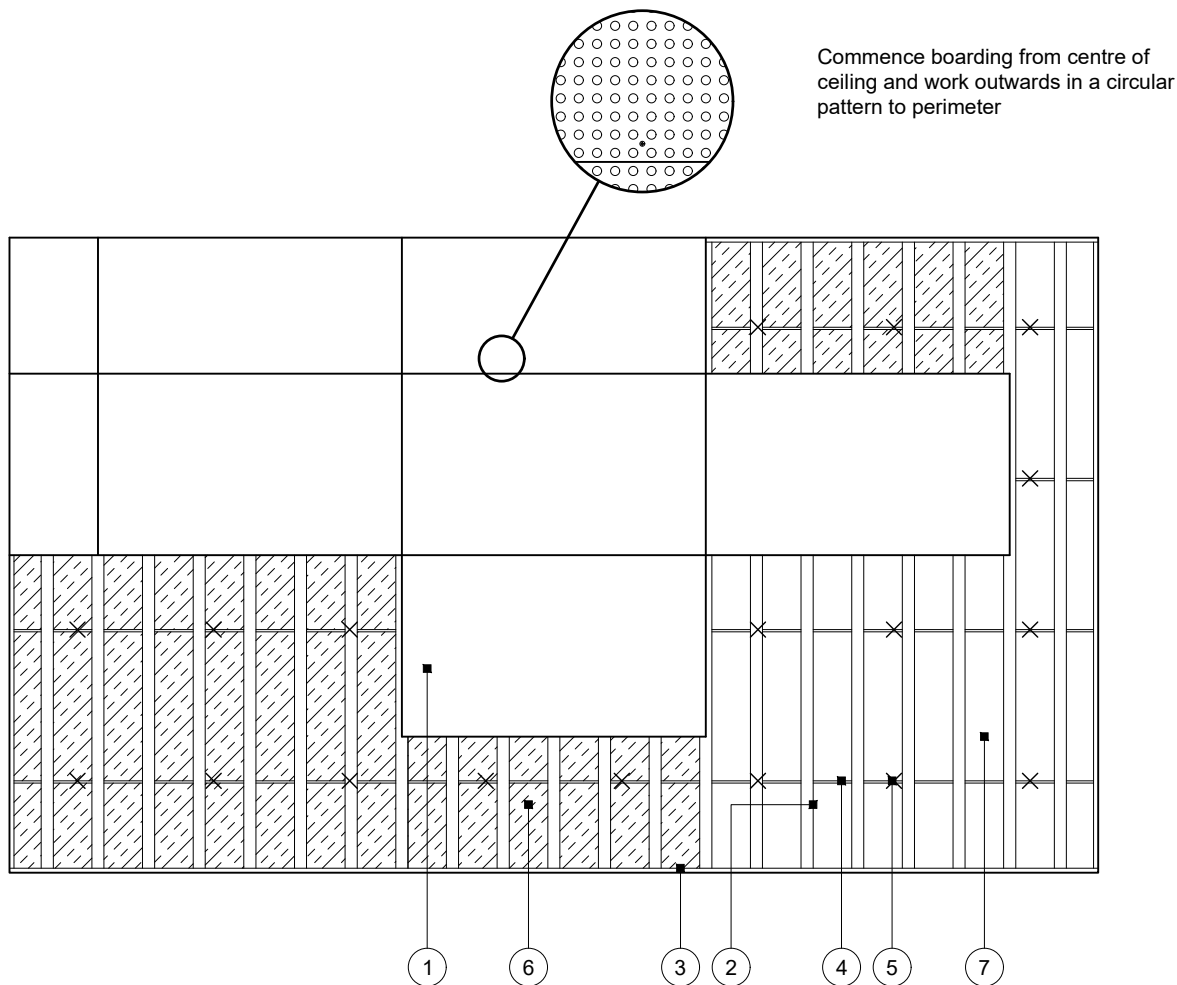


# Standard Detail

This drawing provides general guidance where no performance criteria is given and site specific conditions are not taken into account

## GypCeiling MF

- 1 One layer Rigitone perforated gypsum board fixed with Rigitone Screws at 230mm centres in field of board and 150mm centres at board ends
- 2 Gyprframe MF5 Ceiling Sections at nominal 330mm centres (to suit board length) fixed to each MF7 with two suitable British Gypsum wafer head screws or MF9 Connecting Clip. MF5 ends butted together with 300mm length of MF5 inserted behind and fixed with 4 no. suitable British Gypsum wafer head screws
- 3 Gyprframe MF6 Perimeter Channel suitably fixed to wall at 600mm centres
- 4 Gyprframe MF7 Primary Support Channels at 1000mm centres
- 5 Gyprframe MF8 Strap Hanger or FEA1 Steel Angle hangers at 900mm centres fixed to MF7 with two suitable British Gypsum wafer head screws. Gyprframe MF12 Soffit Cleat fixed to hanger with MF11 Nut and Bolt and suitably fixed to soffit
- 6 Isover insulation where required
- 7 Concrete soffit



## Reflected ceiling plan

**Title:** GypCeiling MF  
Concrete soffit and Rigitone perforated board  
Standard details read with project specification

**Scale at A4:** 1:50  
**Date:** October 2021  
**Dwg No.:** ST-321-CTRT-01

**Drawn:** MRC  
**Approved:** MBH  
**Revision:**

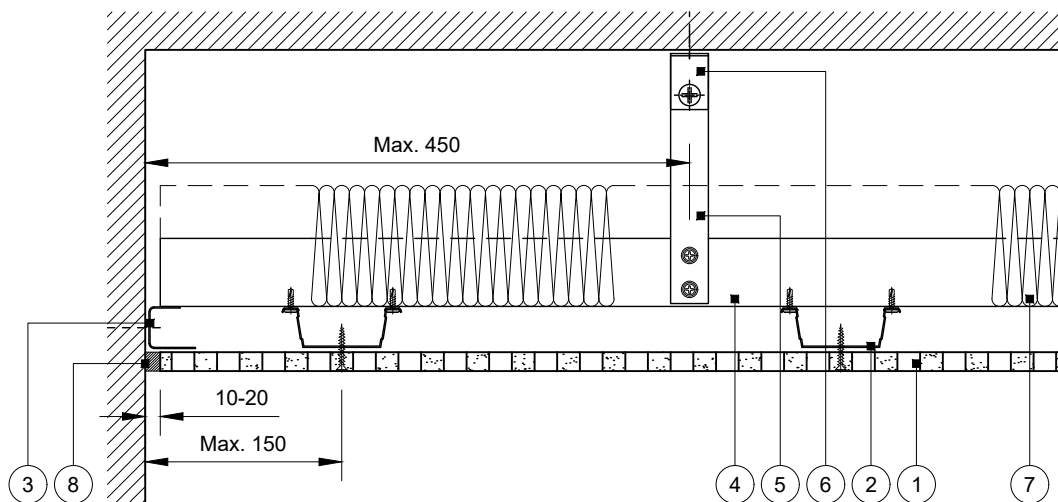
Technical Support Team | [british-gypsum.com](http://british-gypsum.com)

# Standard Detail

This drawing provides general guidance where no performance criteria is given and site specific conditions are not taken into account

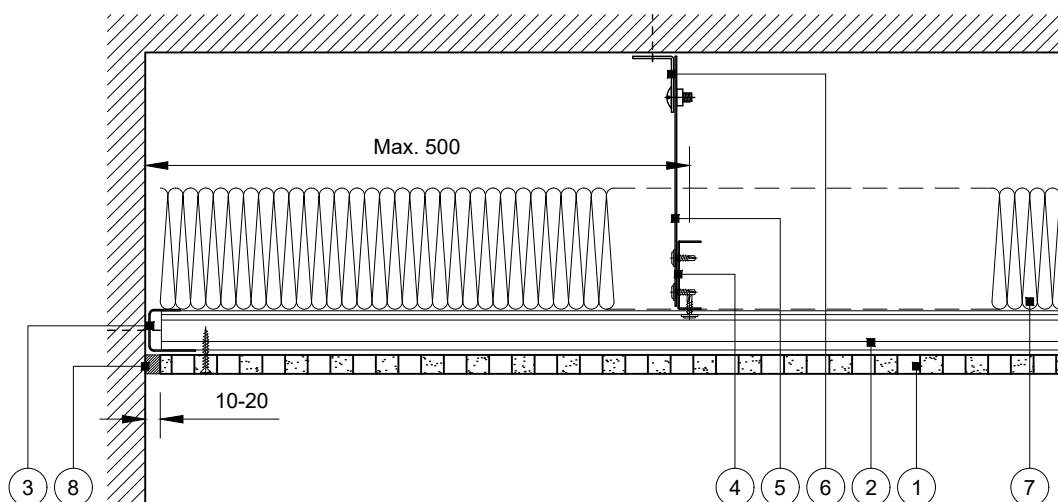
## GypCeiling MF

- 1 One layer Rigitone perforated gypsum board fixed with Rigitone Screws at 230mm centres in field of board and 150mm centres at board ends
- 2 Gyframe MF5 Ceiling Sections at nominal 330mm centres (to suit board length) fixed to each MF7 with two suitable British Gypsum wafer head screws or MF9 Connecting Clip. MF5 ends butted together with 300mm length of MF5 inserted behind and fixed together with two suitable British Gypsum wafer head screws on each side
- 3 Gyframe MF6 Perimeter Channel suitably fixed to wall at 600mm centres
- 4 Gyframe MF7 Primary Support Channels at 1000mm centres
- 5 Gyframe MF8 Strap Hanger or FEA1 Steel Angle hangers at 900mm centres fixed to MF7 with two suitable British Gypsum wafer head screws
- 6 Gyframe MF12 Soffit Cleat fixed to hanger with MF11 Nut and Bolt and suitably fixed to soffit
- 7 Isover insulation where required
- 8 Rigitone Vario 60 filler



### Perimeter 1

MF5 parallel to wall



### Perimeter 2

MF5 perpendicular to wall

**Title:** GypCeiling MF  
Concrete soffit and Rigitone perforated board  
Standard details read with project specification

**Scale at A4:** 1:5  
**Date:** October 2021  
**Dwg No.:** ST-321-CTRT-02

**Drawn:** MRC  
**Approved:** MBH  
**Revision:**

Technical Support Team | british-gypsum.com

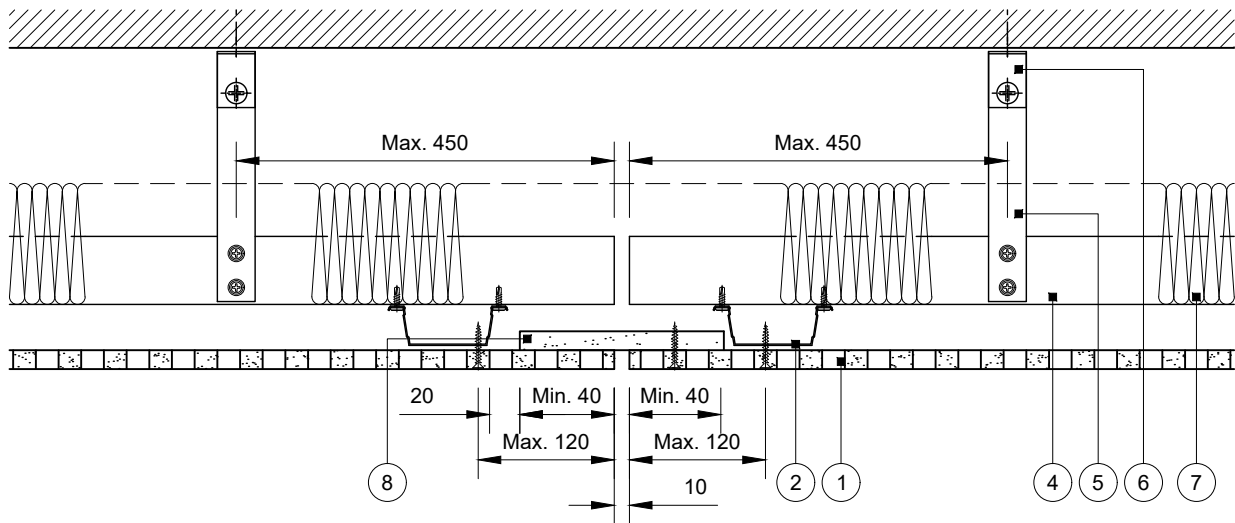
This drawing is provided to customers free of charge and the details shown are subject to the accuracy of the information provided to British Gypsum at the time the drawing was originally requested. The drawing should therefore be approved by the project design and management authority before use to ensure that it meets with their specific project requirements. It should also be read in conjunction with British Gypsum's current literature available at [www.british-gypsum.com](http://www.british-gypsum.com). Taping and finishing in accordance with British Gypsum's current recommendations is assumed (with the exception of FireCase system). Please note the drawing may show British Gypsum products fixed by or to products that are non-British Gypsum products/fixings please refer to Specifying Authority for specification details. This drawing is valid at the time of issue, please check with British Gypsum for the latest version. No duty of care is owed to the recipient or any third party and British Gypsum excludes all liability in respect of the details shown save where death or personal injury is caused due to British Gypsum's negligence or for fraud.

# Standard Detail

This drawing provides general guidance where no performance criteria is given and site specific conditions are not taken into account

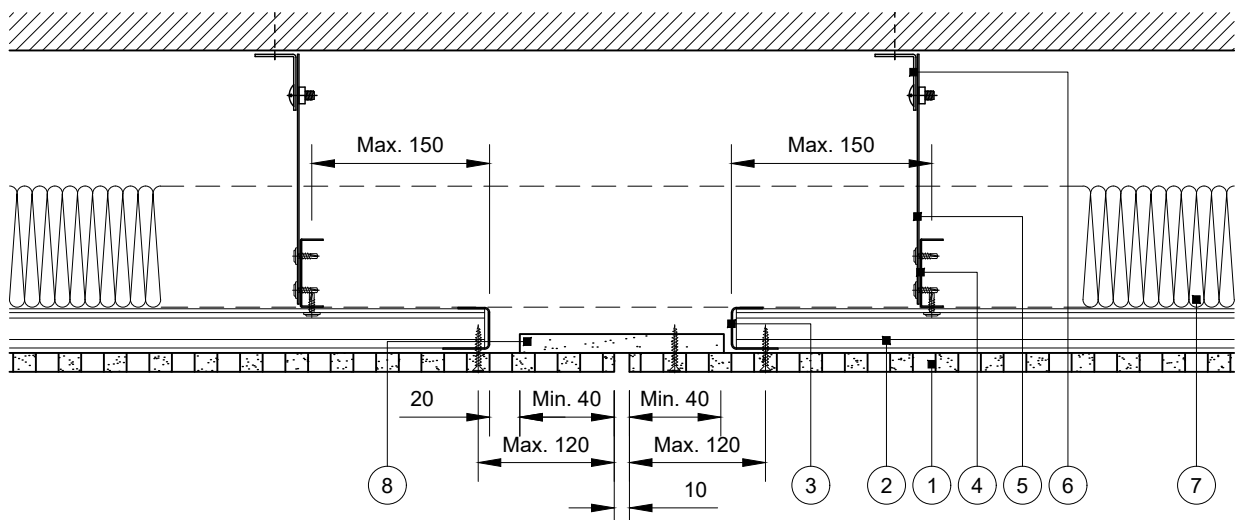
## GypCeiling MF

- 1 One layer Rigitone perforated gypsum board fixed with Rigitone Screws at 230mm centres in field of board and 150mm centres at board ends
- 2 Gypframe MF5 Ceiling Sections at nominal 330mm centres (to suit board length) fixed to each MF7 with two suitable British Gypsum wafer head screws or MF9 Connecting Clip. MF5 ends butted together with 300mm length of MF5 inserted behind and fixed together with two suitable British Gypsum wafer head screws on each side
- 3 Gypframe MF6 Perimeter Channel suitably fixed to wall at 600mm centres
- 4 Gypframe MF7 Primary Support Channels at 1000mm centres
- 5 Gypframe MF8 Strap Hanger or FEA1 Steel Angle hangers at 900mm centres fixed to MF7 with two suitable British Gypsum wafer head screws
- 6 Gypframe MF12 Soffit Cleat fixed to hanger with MF11 Nut and Bolt and suitably fixed to soffit
- 7 Isover insulation where required
- 8 Strip of 12.5mm Gyproc plasterboard fixed to back to Rigitone on one side of joint with Rigitone Screws at 230mm centres



## Expansion Joint 1

MF5 parallel to joint



## Expansion Joint 2

MF5 perpendicular to joint

**Title:** GypCeiling MF  
Concrete soffit and Rigitone perforated board  
Standard details read with project specification

**Scale at A4:** 1:5  
**Date:** October 2021  
**Dwg No.:** ST-321-CTRT-03

**Drawn:** MRC  
**Approved:** MBH  
**Revision:**

Technical Support Team | british-gypsum.com

This drawing is provided to customers free of charge and the details shown are subject to the accuracy of the information provided to British Gypsum at the time the drawing was originally requested. The drawing should therefore be approved by the project design and management authority before use to ensure that it meets with their specific project requirements. It should also be read in conjunction with British Gypsum's current literature available at [www.british-gypsum.com](http://www.british-gypsum.com). Taping and finishing in accordance with British Gypsum's current recommendations is assumed (with the exception of FireCase system). Please note the drawing may show British Gypsum products fixed by or to products that are non-British Gypsum products/fixings please refer to Specifying Authority for specification details. This drawing is valid at the time of issue, please check with British Gypsum for the latest version. No duty of care is owed to the recipient or any third party and British Gypsum excludes all liability in respect of the details shown save where death or personal injury is caused due to British Gypsum's negligence or for fraud.