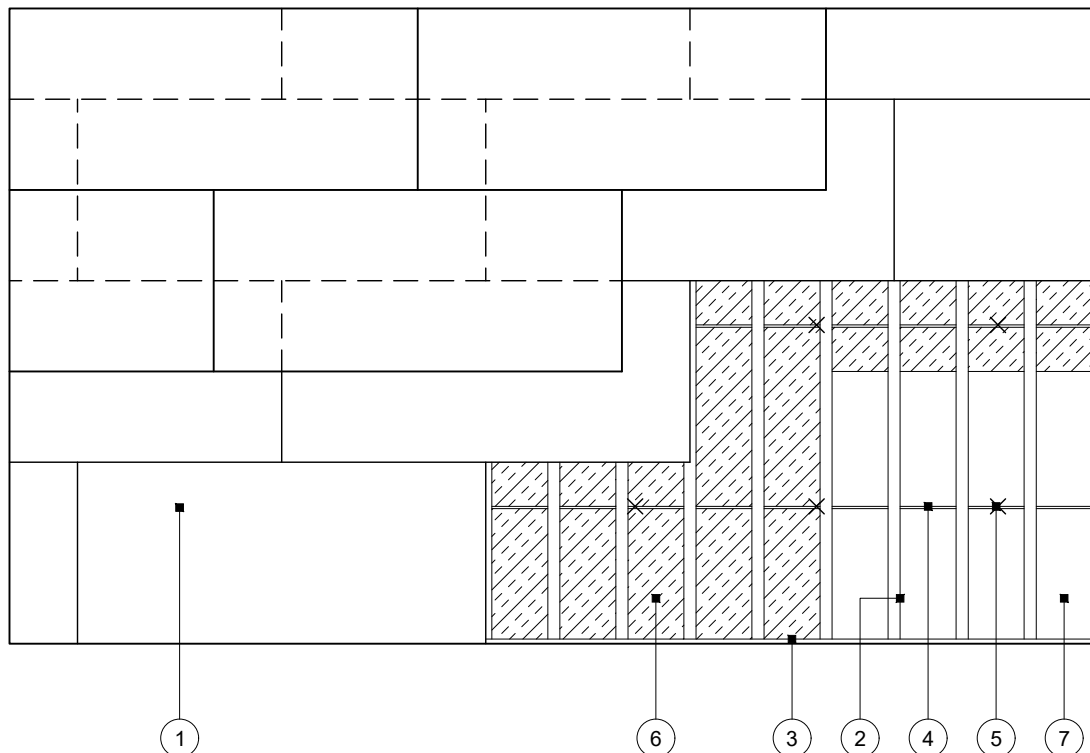


Standard Detail

This drawing provides general guidance where no performance criteria is given and site specific conditions are not taken into account

GypCeiling MF

- 1 Two layers Gyproc plasterboard or Glasroc specialist board fixed with suitable British Gypsum screws at 230mm centres in field of board and 150mm centres at board ends
- 2 Gypframe MF5 Ceiling Sections at max. 450mm centres fixed to each MF7 with two suitable British Gypsum wafer head screws or MF9 Connecting Clip
- 3 Gypframe MF6 Perimeter Channel suitably fixed to wall at 600mm centres
- 4 Gypframe MF7 Primary Support Channels at specified centres
- 5 Gypframe MF8 Strap Hanger or FEA1 Steel Angle hangers at specified centres fixed to MF7 with two suitable British Gypsum wafer head screws. Gypframe MF12 Soffit Cleat fixed to hanger with MF11 Nut and Bolt and suitably fixed to soffit
- 6 Isover insulation where required
- 7 Concrete soffit



Reflected ceiling plan

Title: GypCeiling MF
Concrete soffit and two layers board
Standard details read with project specification

Scale at A4: 1:50
Date: October 2021
Dwg No.: ST-321-CTL2-01

Drawn: MRC
Approved: MBH
Revision:

Technical Support Team | british-gypsum.com

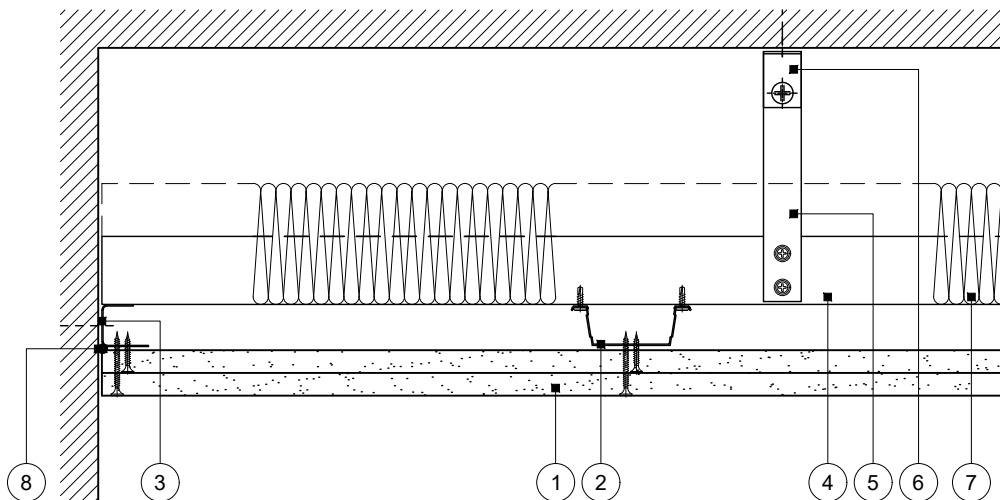
This drawing is provided to customers free of charge and the details shown are subject to the accuracy of the information provided to British Gypsum at the time the drawing was originally requested. The drawing should therefore be approved by the project design and management authority before use to ensure that it meets with their specific project requirements. It should also be read in conjunction with British Gypsum's current literature available at www.british-gypsum.com. Taping and finishing in accordance with British Gypsum's current recommendations is assumed (with the exception of FireCase system). Please note the drawing may show British Gypsum products fixed by or to products that are non-British Gypsum products/fixings please refer to Specifying Authority for specification details. This drawing is valid at the time of issue, please check with British Gypsum for the latest version. No duty of care is owed to the recipient or any third party and British Gypsum excludes all liability in respect of the details shown save where death or personal injury is caused due to British Gypsum's negligence or for fraud.

Standard Detail

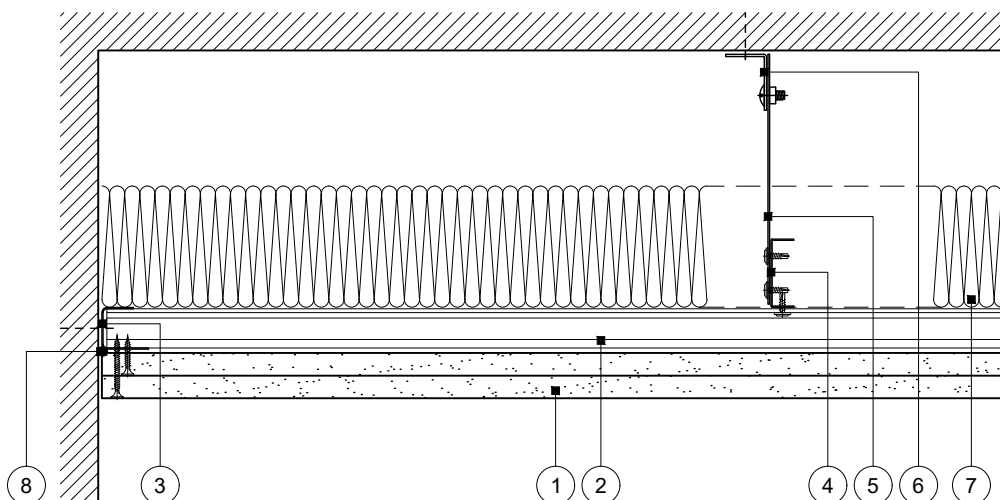
This drawing provides general guidance where no performance criteria is given and site specific conditions are not taken into account

GypCeiling MF

- 1 Two layers Gyproc plasterboard or Glasroc specialist board fixed with suitable British Gypsum screws at 230mm centres in field of board and 150mm centres at board ends
- 2 Gypframe MF5 Ceiling Sections at max. 450mm centres fixed to each MF7 with two suitable British Gypsum wafer head screws or MF9 Connecting Clip
- 3 Gypframe MF6 Perimeter Channel suitably fixed to wall at 600mm centres
- 4 Gypframe MF7 Primary Support Channels at specified centres
- 5 Gypframe MF8 Strap Hanger or FEA1 Steel Angle hangers at specified centres fixed to MF7 with two suitable British Gypsum wafer head screws
- 6 Gypframe MF12 Soffit Cleat fixed to hanger with MF11 Nut and Bolt and suitably fixed to soffit
- 7 Isover insulation where required
- 8 Gyproc Sealant for optimum sound insulation



Perimeter 1
MF5 parallel to wall



Perimeter 2
MF5 perpendicular to wall

Title: GypCeiling MF
Concrete soffit and two layers board
Standard details read with project specification

Scale at A4: 1:5
Date: October 2021
Dwg No.: ST-321-CTL2-02

Drawn: MRC
Approved: MBH
Revision:

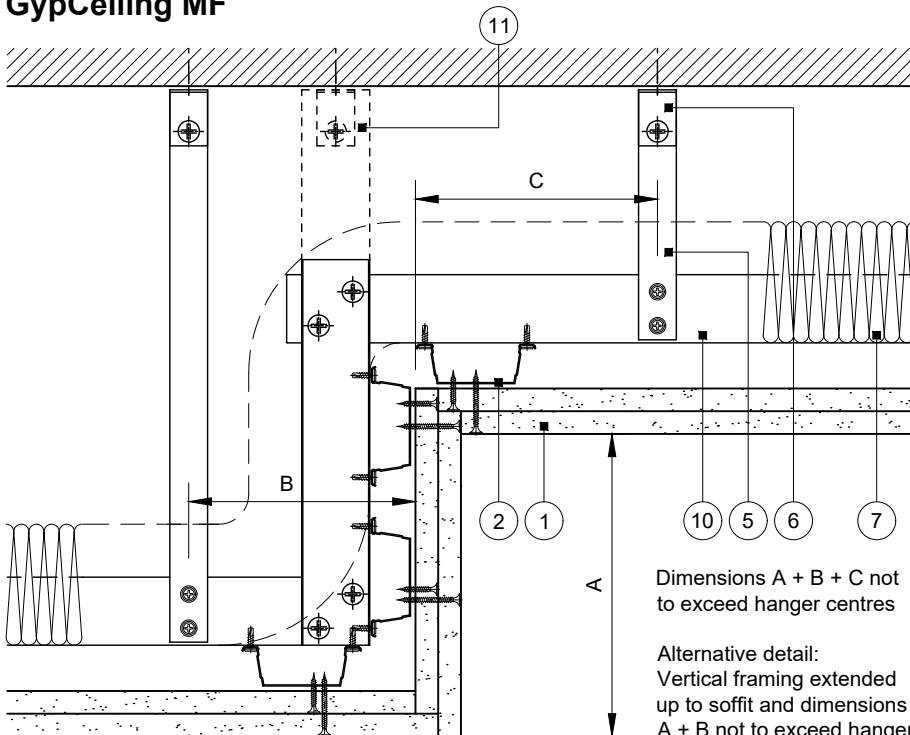
Technical Support Team | british-gypsum.com

This drawing is provided to customers free of charge and the details shown are subject to the accuracy of the information provided to British Gypsum at the time the drawing was originally requested. The drawing should therefore be approved by the project design and management authority before use to ensure that it meets with their specific project requirements. It should also be read in conjunction with British Gypsum's current literature available at www.british-gypsum.com. Taping and finishing in accordance with British Gypsum's current recommendations is assumed (with the exception of FireCase system). Please note the drawing may show British Gypsum products fixed by or to products that are non-British Gypsum products/fixings please refer to Specifying Authority for specification details. This drawing is valid at the time of issue, please check with British Gypsum for the latest version. No duty of care is owed to the recipient or any third party and British Gypsum excludes all liability in respect of the details shown save where death or personal injury is caused due to British Gypsum's negligence or for fraud.

Standard Detail

This drawing provides general guidance where no performance criteria is given and site specific conditions are not taken into account

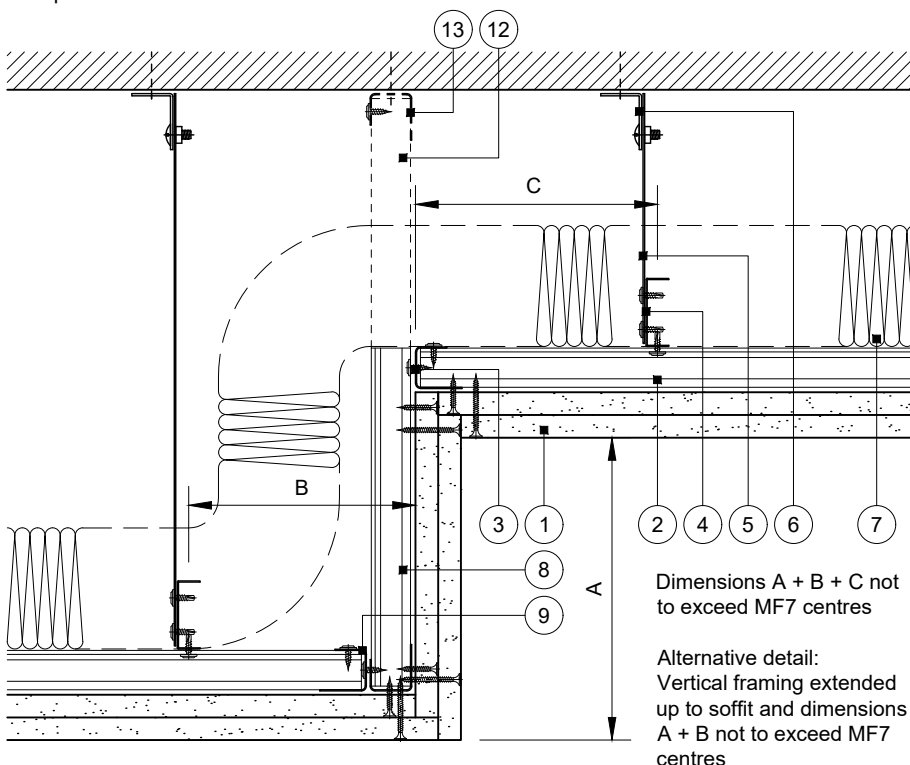
GypCeiling MF



- 1 Two layers Gyproc plasterboard or Glasroc specialist board fixed with suitable British Gypsum screws at 230mm centres in field of board and 150mm centres at board ends
- 2 Gyproframe MF5 Ceiling Sections at max. 450mm centres fixed to each MF7 with two suitable British Gypsum wafer head screws or (for horizontal areas only) MF9 Connecting Clip
- 3 Gyproframe MF6 Perimeter Channel fixed to each MF5 with suitable British Gypsum wafer head screws
- 4 Gyproframe MF7 Primary Support Channels at specified centres
- 5 Gyproframe MF8 Strap Hanger or FEA1 Steel Angle hangers at specified centres fixed to MF7 with two suitable British Gypsum wafer head screws
- 6 Gyproframe MF12 Soffit Cleat fixed to hanger with MF11 Nut and Bolt and suitably fixed to soffit
- 7 Isover insulation where required
- 8 Vertical Gyproframe MF5 Ceiling Sections at max. 450mm centres fixed to MF6 at top with suitable British Gypsum wafer head screws
- 9 Gyproframe MF6 Perimeter Channels fixed together at 600mm centres and to each MF5 with suitable British Gypsum wafer head screws
- 10 Gyproframe MF7 Primary Support Channels at specified centres fixed together with two MF11 Nut and Bolt
- 11 Alternative detail Gyproframe MF7 Primary Support Channels extended up to soffit and fixed as hangers
- 12 Alternative detail Gyproframe MF5 Ceiling Sections extended up to soffit and fixed to MF6 at top with suitable British Gypsum wafer head screws
- 13 Gyproframe MF6 Perimeter Channel suitably fixed to soffit at 600mm centres

Change of level 1

MF5 parallel to vertical face



Change of level 2

MF5 perpendicular to vertical face

Title: GypCeiling MF
Concrete soffit and two layers board
Standard details read with project specification

Scale at A4: 1:5
Date: October 2021
Dwg No.: ST-321-CTL2-03

Drawn: MRC
Approved: MBH
Revision:

Technical Support Team | british-gypsum.com

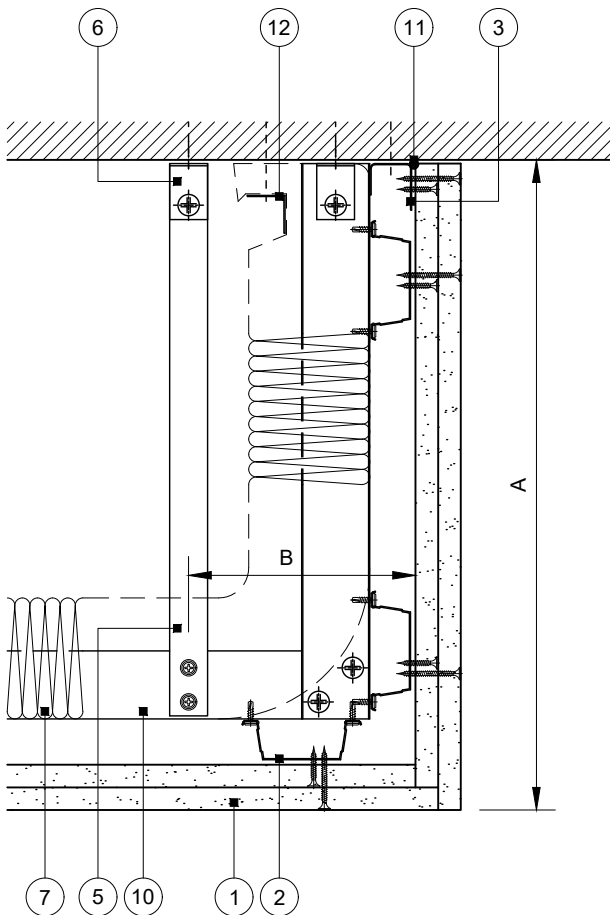
This drawing is provided to customers free of charge and the details shown are subject to the accuracy of the information provided to British Gypsum at the time the drawing was originally requested. The drawing should therefore be approved by the project design and management authority before use to ensure that it meets with their specific project requirements. It should also be read in conjunction with British Gypsum's current literature available at www.british-gypsum.com. Taping and finishing in accordance with British Gypsum's current recommendations is assumed (with the exception of FireCase system). Please note the drawing may show British Gypsum products fixed by or to products that are non-British Gypsum products/fixings please refer to Specifying Authority for specification details. This drawing is valid at the time of issue, please check with British Gypsum for the latest version. No duty of care is owed to the recipient or any third party and British Gypsum excludes all liability in respect of the details shown save where death or personal injury is caused due to British Gypsum's negligence or for fraud.

Standard Detail

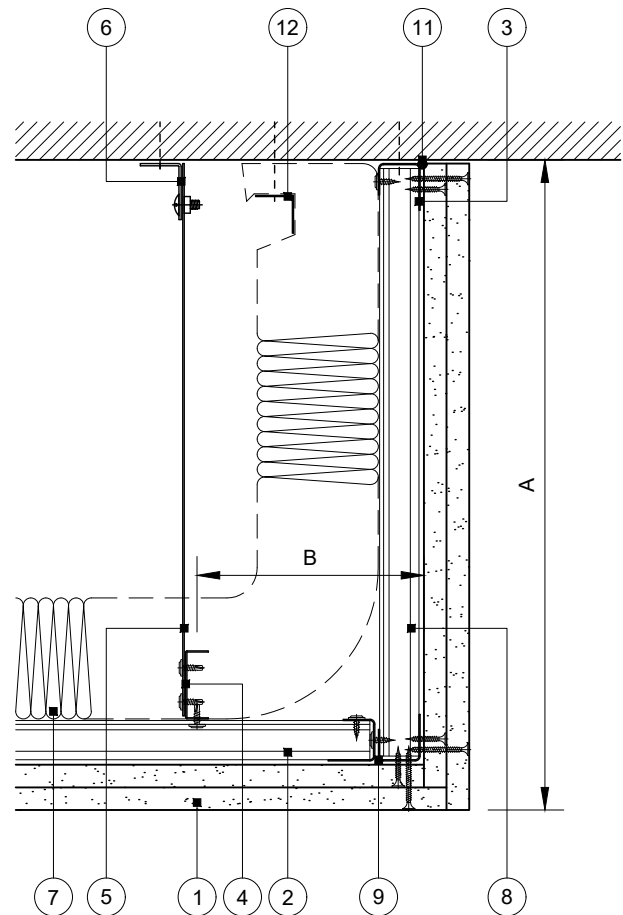
This drawing provides general guidance where no performance criteria is given and site specific conditions are not taken into account

GypCeiling MF

- 1 Two layers Gyproc plasterboard or Glasroc specialist board fixed with suitable British Gypsum screws at 230mm centres in field of board and 150mm centres at board ends
- 2 Gyproframe MF5 Ceiling Sections at max. 450mm centres fixed to each MF7 with two suitable British Gypsum wafer head screws or (for horizontal areas only) MF9 Connecting Clip
- 3 Gyproframe MF6 Perimeter Channel suitably fixed to soffit at 600mm centres
- 4 Gyproframe MF7 Primary Support Channels at specified centres
- 5 Gyproframe MF8 Strap Hanger or FEA1 Steel Angle hangers at specified centres fixed to MF7 with two suitable British Gypsum wafer head screws
- 6 Gyproframe MF12 Soffit Cleat fixed to hanger with MF11 Nut and Bolt and suitably fixed to soffit
- 7 Isover insulation where required
- 8 Vertical Gyproframe MF5 Ceiling Sections at max. 450mm centres fixed to MF6 at top with suitable British Gypsum wafer head screws
- 9 Gyproframe MF6 Perimeter Channels fixed together at 600mm centres and to each MF5 with suitable British Gypsum wafer head screws
- 10 Gyproframe MF7 Primary Support Channels at specified centres fixed together with two MF11 Nut and Bolt
- 11 Gyproc Sealant for optimum sound insulation
- 12 Gyproframe steel angle or timber batten suitably fixed to soffit to retain insulation where required



Dimensions A + B not to exceed hanger centres



Dimensions A + B not to exceed MF7 centres

Bulkhead 1

MF5 parallel to vertical face

Bulkhead 2

MF5 perpendicular to vertical face

Title: GypCeiling MF
Concrete soffit and two layers board
Standard details read with project specification

Scale at A4: 1:5
Date: October 2021
Dwg No.: ST-321-CTL2-04

Drawn: MRC
Approved: MBH
Revision:

Technical Support Team | british-gypsum.com

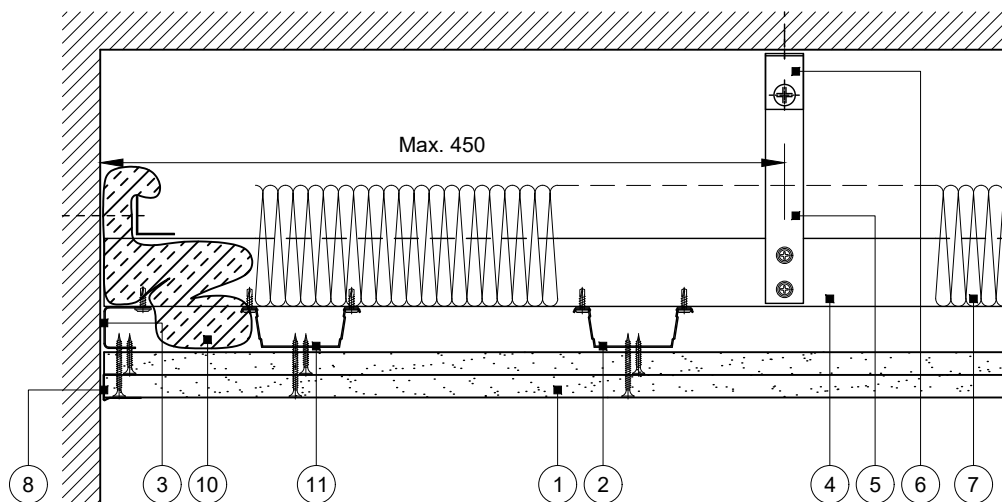
This drawing is provided to customers free of charge and the details shown are subject to the accuracy of the information provided to British Gypsum at the time the drawing was originally requested. The drawing should therefore be approved by the project design and management authority before use to ensure that it meets with their specific project requirements. It should also be read in conjunction with British Gypsum's current literature available at www.british-gypsum.com. Taping and finishing in accordance with British Gypsum's current recommendations is assumed (with the exception of FireCase system). Please note the drawing may show British Gypsum products fixed by or to products that are non-British Gypsum products/fixings please refer to Specifying Authority for specification details. This drawing is valid at the time of issue, please check with British Gypsum for the latest version. No duty of care is owed to the recipient or any third party and British Gypsum excludes all liability in respect of the details shown save where death or personal injury is caused due to British Gypsum's negligence or for fraud.

Standard Detail

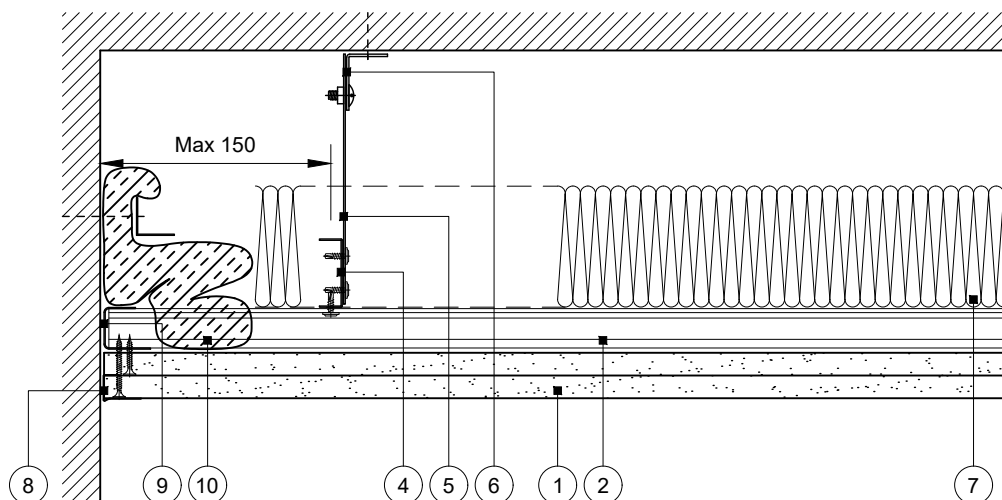
This drawing provides general guidance where no performance criteria is given and site specific conditions are not taken into account

GypCeiling MF

- 1 Two layers Gyproc plasterboard or Glasroc specialist board fixed with suitable British Gypsum screws at 230mm centres in field of board and 150mm centres at board ends
- 2 Gyproframe MF5 Ceiling Sections at max. 450mm centres fixed to each MF7 with two suitable British Gypsum wafer head screws or MF9 Connecting Clip
- 3 Gyproframe MF6 Perimeter Channel fixed to each MF7 with suitable British Gypsum wafer head screws
- 4 Gyproframe MF7 Primary Support Channels at specified centres
- 5 Gyproframe MF8 Strap Hanger or FEA1 Steel Angle hangers at specified centres fixed to MF7 with two suitable British Gypsum wafer head screws
- 6 Gyproframe MF12 Soffit Cleat fixed to hanger with MF11 Nut and Bolt and suitably fixed to soffit
- 7 Isover insulation where required
- 8 Gyproc Drywall Edge Bead
- 9 Gyproframe MF6 Perimeter Channel
- 10 To minimise loss of sound insulation and maintain fire resistance of system, cloak unfixed perimeter using stone mineral wool (33 Kg/m³) by others secured with Gyproframe FEA1 Steel Angle suitably fixed to wall at 600mm centres
- 11 Additional Gyproframe MF5 Ceiling Section at perimeter fixed to each MF7 with two suitable British Gypsum wafer head screws or MF9 Connecting Clip



Unfixed perimeter 1
MF5 parallel to wall



Unfixed perimeter 2
MF5 perpendicular to wall

Title: GypCeiling MF
Concrete soffit and two layers board
Standard details read with project specification

Scale at A4: 1:5
Date: October 2021
Dwg No.: ST-321-CTL2-05

Drawn: MRC
Approved: MBH
Revision:

Technical Support Team | british-gypsum.com

This drawing is provided to customers free of charge and the details shown are subject to the accuracy of the information provided to British Gypsum at the time the drawing was originally requested. The drawing should therefore be approved by the project design and management authority before use to ensure that it meets with their specific project requirements. It should also be read in conjunction with British Gypsum's current literature available at www.british-gypsum.com. Taping and finishing in accordance with British Gypsum's current recommendations is assumed (with the exception of FireCase system). Please note the drawing may show British Gypsum products fixed by or to products that are non-British Gypsum products/fixings please refer to Specifying Authority for specification details. This drawing is valid at the time of issue, please check with British Gypsum for the latest version. No duty of care is owed to the recipient or any third party and British Gypsum excludes all liability in respect of the details shown save where death or personal injury is caused due to British Gypsum's negligence or for fraud.