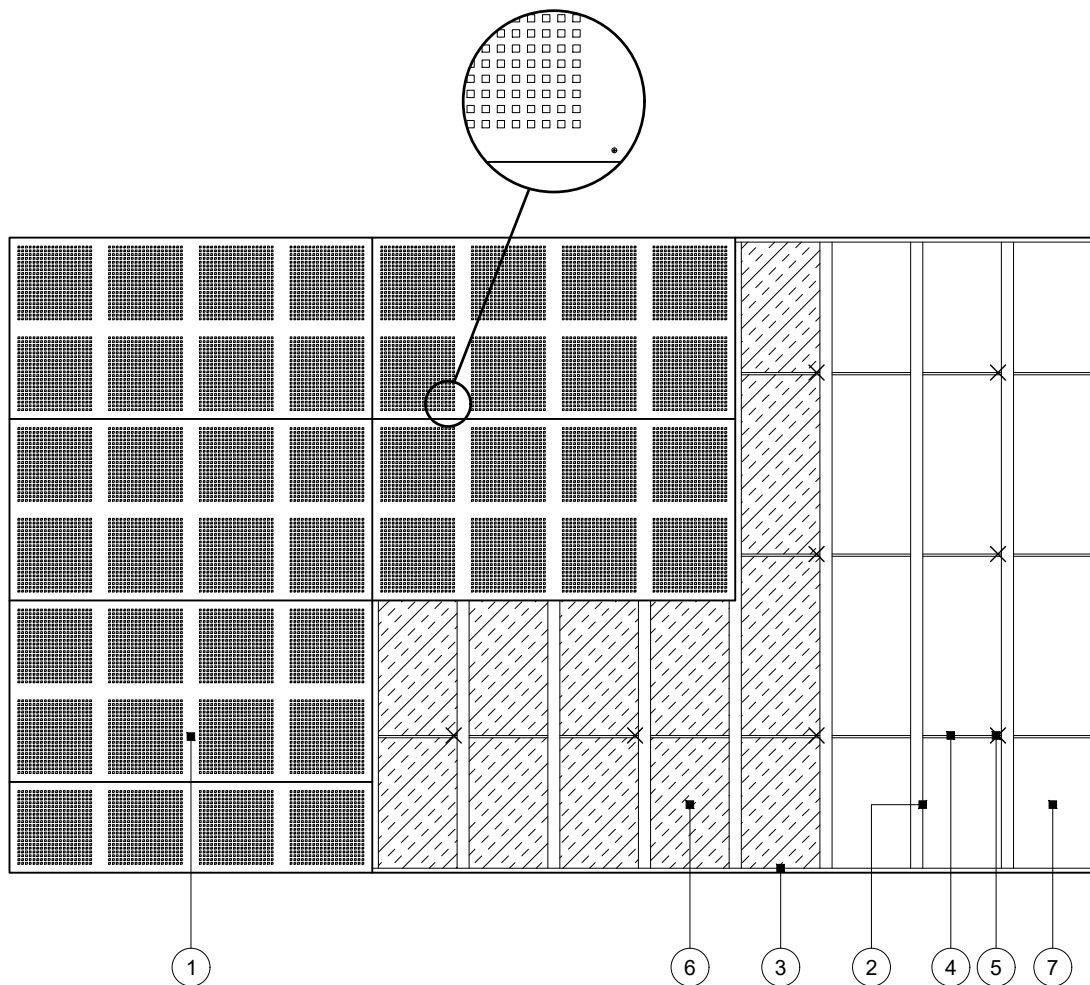


# Standard Detail

This drawing provides general guidance where no performance criteria is given and site specific conditions are not taken into account

## GypCeiling MF

- 1 One layer Gyptone perforated plasterboard fixed with suitable British Gypsum screws at 230mm centres
- 2 Gyprframe MF5 Ceiling Sections at specified centres fixed to each MF7 with two suitable British Gypsum wafer head screws or MF9 Connecting Clip
- 3 Gyprframe MF6 Perimeter Channel suitably fixed to wall at 600mm centres
- 4 Gyprframe MF7 Primary Support Channels at 1200mm centres
- 5 Gyprframe MF8 Strap Hanger or FEA1 Steel Angle hangers at 1200mm centres fixed to MF7 with two suitable British Gypsum wafer head screws. Gyprframe MF12 Soffit Cleat fixed to hanger with MF11 Nut and Bolt and suitably fixed to soffit
- 6 Isover insulation where required
- 7 Concrete soffit



## Reflected ceiling plan

**Title:** GypCeiling MF  
Concrete soffit and Gyptone perforated board  
Standard details read with project specification

**Scale at A4:** 1:50  
**Date:** October 2021  
**Dwg No.:** ST-321-CTGT-01

**Drawn:** MRC  
**Approved:** MBH  
**Revision:**

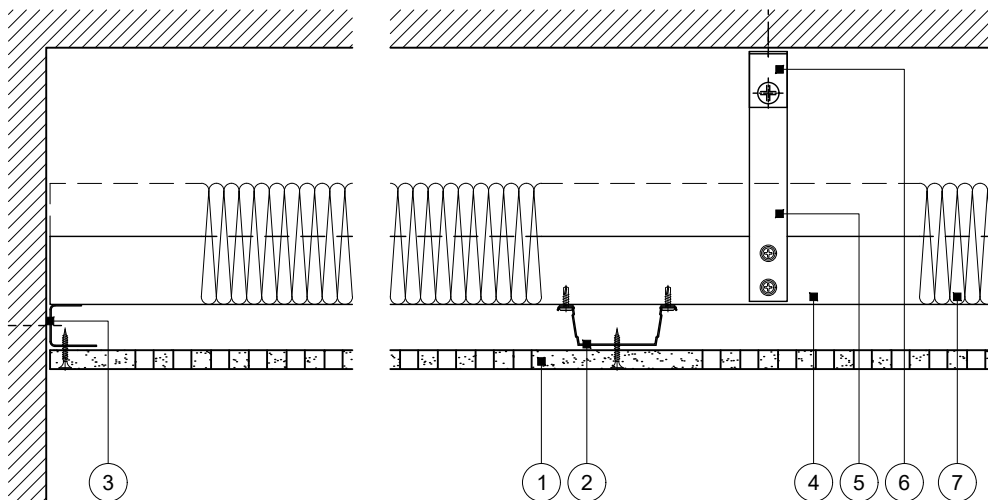
Technical Support Team | [british-gypsum.com](http://british-gypsum.com)

# Standard Detail

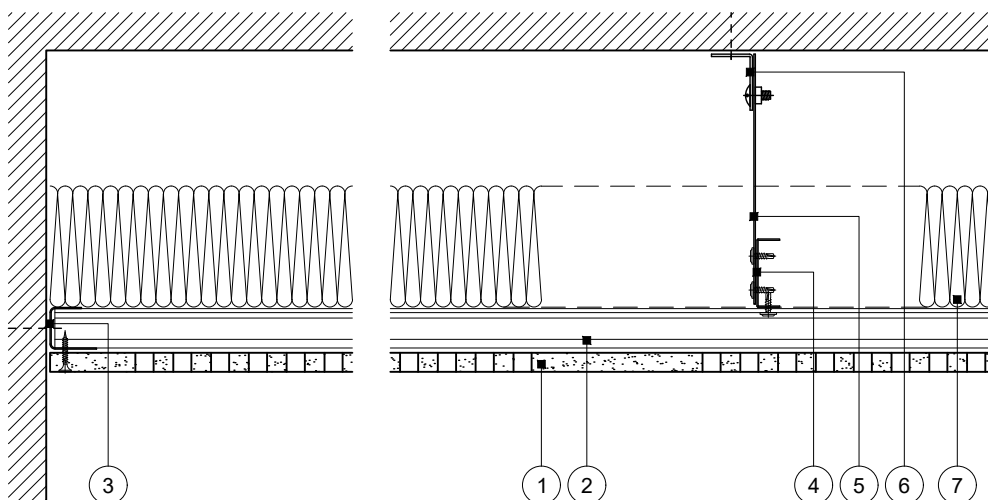
This drawing provides general guidance where no performance criteria is given and site specific conditions are not taken into account

## GypCeiling MF

- |  |   |
|--|---|
| <ol style="list-style-type: none"> <li>1 One layer Gyptone perforated plasterboard fixed with suitable British Gypsum screws at 230mm centres</li> <li>2 Gyframe MF5 Ceiling Sections at specified centres fixed to each MF7 with two suitable British Gypsum wafer head screws or MF9 Connecting Clip</li> <li>3 Gyframe MF6 Perimeter Channel suitably fixed to wall at 600mm centres</li> </ol> | <ol style="list-style-type: none"> <li>4 Gyframe MF7 Primary Support Channels at 1200mm centres</li> <li>5 Gyframe MF8 Strap Hanger or FEA1 Steel Angle hangers at 1200mm centres fixed to MF7 with two suitable British Gypsum wafer head screws</li> <li>6 Gyframe MF12 Soffit Cleat fixed to hanger with MF11 Nut and Bolt and suitably fixed to soffit</li> <li>7 Isover insulation where required</li> </ol> |
|--|---|



**Perimeter 1**  
MF5 parallel to wall



**Perimeter 2**  
MF5 perpendicular to wall

**Title:** GypCeiling MF  
Concrete soffit and Gyptone perforated board  
Standard details read with project specification

**Scale at A4:** 1:5  
**Date:** October 2021  
**Dwg No.:** ST-321-CTGT-02

**Drawn:** MRC  
**Approved:** MBH  
**Revision:**

Technical Support Team | british-gypsum.com