

## Plasterboard accessories

The Gyproc range of accessories includes everything you need to finish plasterboard linings and partitions ready for decoration.

Every stage is catered for, from Gyproc Dri-Wall Adhesive for simple and quick board fixing, through reinforcement tapes and jointing compounds for perfect plasterboard joints, angles and arches, to Gyproc Primer and Sealer. There is also a range of products to cater for expansion, fire resistance and acoustic sealing - all designed to provide exactly the level of quality and performance required as part of an integrated, lifetime warranted, British Gypsum system.



## Plasterboard accessories index

### Jointing materials

Gyproc Joint Cement	506
Gyproc Ready Mix Joint Cement	506
Gyproc ProMix LITE Joint Cement	507
Gyproc Easi-Fill	507
Gyproc Easi-Fill 45	508
Gyproc Joint Filler	508
Gyproc Joint Tape	509
Gyproc Corner Tape	509
Gyproc Drywall Primer	510
Gyproc Drywall Sealer	510

### Miscellaneous

Gyproc Sealant	511
Gyproc Soundcoat Plus	511
Gyproc Dri-Wall Adhesive	512
Gyproc Control Joint	512
Gyproc FireStrip	513

### Beads

Gyproc No-Coat	513
Gyproc Drywall Metal Angle Bead	514
Gyproc Drywall Archbead	514
Gyproc Drywall Metal Edge Bead	515
Gyproc Drywall Plastic Edge Bead	515

## Gyproc Joint Cement



22.5kg bags

### Characteristics

An air-drying, powdered jointing material.

### Application

Used in the traditional 3-stage jointing process. Designed for the finishing stage over Gyproc Joint Filler in hand jointing, or for all application stages with mechanical jointing tools.

## Gyproc Ready Mix Joint Cement



12 litre tubs

### Characteristics

An air-drying, ready-mixed jointing material.

### Application

Used in the traditional 3-stage jointing process. Designed for the finishing stage over Gyproc Joint Filler in hand jointing, or for all application stages with mechanical jointing tools.

## Gyproc ProMix LITE Joint Cement



17 litre tubs

### Characteristics

An alternative ready-mixed jointing material, with improved workability, lower shrinkage and easier sanding than Gyproc Ready Mix Joint Cement.

### Application

Used in the traditional 3-stage jointing process.

## Gyproc Easi-Fill



10kg bags

### Characteristics

A combined setting and air-drying gypsum based material for bulk filling and finishing of joints. High coverage rate and minimal drying shrinkage allows application in only two coats. Easy to mix, apply and sand, with 90 minutes working time and the second (final) coat can be applied after 120 minutes.

### Application

Used in the 2-stage method of plasterboard jointing.

## Gyproc Easi-Fill 45



10kg bags

### Characteristics

A combined setting and air-drying gypsum based material for bulk filling and finishing of joints. High coverage rate and minimal drying shrinkage allows application in only two coats. Easy to mix, apply and sand, with 45 minutes working time and the second (final) coat can be applied after 70 minutes.

### Application

Used in the 2-stage method of plasterboard jointing.

## Gyproc Joint Filler



12.5kg bags

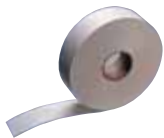
### Characteristics

A gypsum based setting material for bulk and secondary filling of plasterboard joints. A low shrinkage product for hand application with 90 minutes working time.

### Application

Used in stage 1 and 2 of the 3-stage traditional method of plasterboard jointing.

## Gyproc Joint Tape



150 metre rolls

### Characteristics

Paper tape with centre crease, chamfered edges and spark perforations, for easy use in internal angle joints. Provides excellent crack-resistance.

### Application

Designed for reinforcing flat joints and internal angles in both manual and Gyproc Speed Tape mechanical jointing systems. Also used for joint reinforcing plaster finishes to plasterboard.

## Gyproc Corner Tape



33 metre rolls

### Characteristics

Paper joint tape bonded to two corrosion resistant metal strips, for manual application only. Supplied in a cardboard dispenser.

### Application

For reinforcing external angles in plasterboard construction. Also ideal for internal or external angles that are not 90°.

## Gyproc Drywall Primer

10 litre tubs



### Characteristics

A general-purpose plasterboard primer, for brush or roller application.

### Application

Provides an ideal surface for decoration with most paints and wall coverings.

## Gyproc Drywall Sealer

10 litre tubs



### Characteristics

A specially formulated sealer which provides vapour control and a superior, durable finish when applied in two coats.

### Application

Suitable for decoration with paints and most wall coverings. A single coat protects the board surface from subsequent steam stripping. Applied with a brush or roller.

## Gyproc Sealant



0.93 litre cartridge

0.38 litre cartridge

### Characteristics

An acrylic sealant and adhesive.

### Application

Used for sealing air gaps in British Gypsum systems to maintain optimum acoustic performance. Also used for fixing Gyproc plasterboards in the British Gypsum **Drilyner RF** system, and Gyproc ThermoLine laminates in the British Gypsum **Drilyner MF** system.

## Gyproc Soundcoat Plus



25kg bags

### Characteristics

Gypsum-based parge coat material.

### Application

Designed for application to masonry party walls, prior to drylining, to improve acoustic performance by sealing airpaths (through cracks and block permeability).

Used in Robust Detail wall constructions.

## Gyproc Dri-Wall Adhesive



25Kg bags

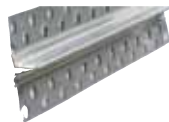
### Characteristics

A general-purpose gypsum-based adhesive.

### Application

For use in British Gypsum DriLyner systems, on high, medium or low suction backgrounds.

## Gyproc Control Joint



47mm wide x 3048mm length

### Characteristics

Pre-formed galvanised metal strip.

### Application

Used to form joints in drywall systems to accommodate expansion or contraction of up to 7mm.

## Gyproc FireStrip



Length  
mm

3600

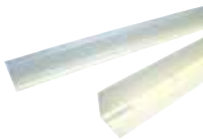
### Characteristics

A soft extruded linear intumescent gap sealer, to maintain fire resistance.

### Application

Designed to be used with British Gypsum GypWall metal framed systems as part of the deflection head detail.

## Gyproc No-Coat



Length  
mm

Ultraflex 325

30m

Ulratrim L

3050mm

### Characteristics

A range of high-performance corner reinforcement products for jointed systems.

### Application

Ultraflex 325 adjusts to any angle of both internal and external corners, and is supplied on a roll, therefore eliminating waste.

Ulratrim L forms crisp, straight lines to board edges - ideal for trimming ceiling lines and at door / window jambs.

## Gyproc Drywall Metal Angle Bead



25mm x 25mm,  
3000mm lengths

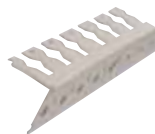
### Characteristics

Perforated galvanised metal bead.

### Application

For reinforcing external 90° angles where maximum protection is required.

## Gyproc Drywall Archbead



25mm x 25mm,  
3000mm lengths

### Characteristics

Extruded uPVC profile with equal 25mm legs.

### Application

The special design allows for curving around arches and reveals down to 250mm minimum radius.

## Gyproc Drywall Metal Edge Bead



12.5mm  
2400mm or 3000mm lengths

15mm  
3000mm lengths

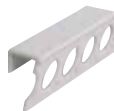
### Characteristics

Galvanised steel channel. Asymmetric profile with one perforated leg and pre-formed arris to accommodate jointing material.

### Application

Used to protect exposed plasterboard edges and form a defined edge to plasterboard area.

## Gyproc Drywall Plastic Edge Bead



12.5mm, 3000mm lengths

### Characteristics

Extruded uPVC channel. Asymmetric profile with one perforated leg and pre-formed arris to accommodate jointing material.

### Application

Used to protect exposed plasterboard edges and form a defined edge to plasterboard areas.