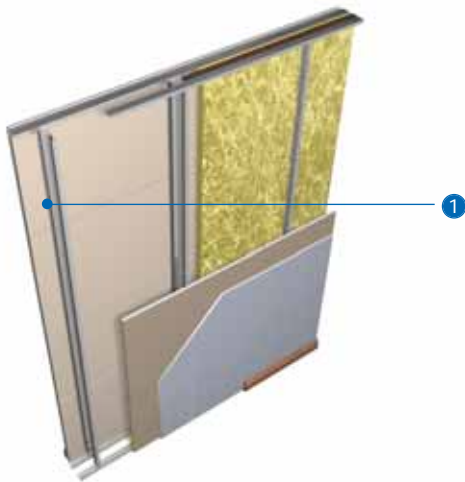


Independent twin-frame acoustic separating wall system

GypWall QUIET IWL is a lightweight, non-loadbearing, steel 'I' stud twin-framed acoustic separating wall, that requires no bracing. As an approved Robust Detail construction (E-WS-2) it is primarily used as sound resisting walls in residential units such as flats and apartments, to exceed the requirements of national Building Regulations Part E. The system can also be specified in commercial and industrial buildings to meet a specific standard of sound performance.







1 Gypframe 'I' Stud.

Key facts

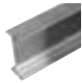
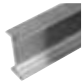
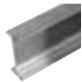
- An approved Robust Detail (RD) construction that can be used to meet Part E regulations for separating walls without Pre-Completion Testing
- Satisfies excess storey height requirements
- Accommodates services between the twin-stud frameworks
- Satisfies *BS 5234* strength and robustness requirements up to Severe Duty

Components

Gyproc board products

			Take-off quantities ¹
	Gyproc FireLine²		200m ² per layer if specified
	Thickness	12.5, 15mm	
	Width	1200mm	
	Gyproc SoundBloc²		200m ² per layer
	Thickness	15mm	
	Width	1200mm	

Gypframe metal products

	Gypframe 60 I 70 'I' Stud		335m
	Length	3600, 4200mm	
	Gypframe 70 I 70 'I' Stud		335m
	Length	3600, 4200mm	
	Gypframe 92 I 90 'I' Stud		335m
	Length	5000, 6000mm	

¹ Quantities for 100m² of straight partition with a double layer of board each side. Quantities are approximate and for guidance only, no allowance has been made for waste, openings, abutments, etc.





Gypframe metal products

			Take-off quantities ¹
	Gypframe Standard Floor & Ceiling Channels		Dependent on partition run
		62 C 50, 72 C 50, 94 C 50	
	Gypframe Deep Flange Floor & Ceiling Channels		
		62 DC 60, 72 DC 60	
	Gypframe Extra Deep Flange Floor & Ceiling Channels		
	72 EDC 80, 94 EDC 70		
	All channels are available in 3600mm only		
	Gypframe GFS1 Fixing Strap		as required
	Length	2400mm	
	Gypframe 99 FC 50 Fixing Channel		as required
	Length	2400mm	

² Moisture resistant boards are specified in intermittent wet use areas e.g. shower cubicles

Gypframe metal products		Take-off quantities ¹
	Gypframe 150 FC 90 Fixing Channel Length 1194mm	as required
	Gypframe 60 S 50 'C' Stud Length 3000, 3600mm	as required
	Gypframe 70 S 50 'C' Stud Length 2400, 2700, 3000, 3600, 4200mm	as required
	Gypframe 92 S 50 'C' Stud Length 3600, 4200mm	as required
	Gypframe GA5 Internal Fixing Angle Length 2400, 3600mm	as required

Fixing and finishing products		Take-off quantities ¹
	Gyproc Jack-Point Screws For fixing boards to stud framing 0.8mm thick or greater and 'I' studs greater than 0.55mm thick.	1 st layer - 1750 2 nd layer - 2250
	Gyproc Sealant For sealing airpaths for optimum sound insulation.	1 cartridge per 35m based on a 6 - 10mm bead
	Gyproc jointing materials For seamless jointing.	as required
	Gyproc edge beads Protecting and enhancing board edges.	as required

Fixing and finishing products	Take-off quantities ¹
 <p>Gyproc Control Joint To accommodate structural movement.</p>	as required
 <p>Gyproc FireStrip For fire-stopping deflection heads.</p>	as required
 <p>Thistle Board Finish or Thistle Multi-Finish To provide a plaster skim finish.</p> <p>or</p>  <p>Thistle Durafinish To provide improved resistance to accidental damage.</p>	10m ² per 25kg bag
 <p>Isover APR 1200 For enhanced acoustic performance. 100mm.</p>	100m ²

¹ Quantities for 100m² of straight partition with a double layer of board each side. Quantities are approximate and for guidance only, no allowance has been made for waste, openings, abutments, etc.

Construction tips

- The following points should be considered in addition to the construction tips for GypWall CLASSIC
- The estimated construction time is 1 - 1.5m² / man hour ready for finishing
- For Robust Detail constructions specific flanking details apply - refer to the Robust Detail Handbook
- Robust Details Ltd Technical Support - 0870 240 8209

Installation



- Gyprame Floor & Ceiling Channel is fixed to the floor and soffit.
- 62mm or 72mm head and floor channels must be securely fixed with a line of fixings at 600mm maximum centres, 94mm with two lines of staggered fixings at 600mm maximum centres. If the floor is uneven a 38mm thick timber sole plate equal to the width of the channel should be used. If the concrete or screeded floor is new, consideration should be given to the installation of a damp-proof membrane between the floor surface and the channel or sole plate.



- Gyproframe 'I' Studs are fitted vertically to a friction-fit within the channel sections, and Gyproframe 'C' Studs to abutments, to form the first framework. Where studs are used at heights greater than 4m, consider locking into the floor channels using Gyproc Crimping Tool, or Gyproc Wafer Head Drywall Screws.



- The second framework is installed as the first, with stud frameworks spaced to achieve the specified wall thickness. Do not brace the two frames.



- Apply Gyproc Sealant to both sides of frame perimeter to provide optimum acoustic performance.

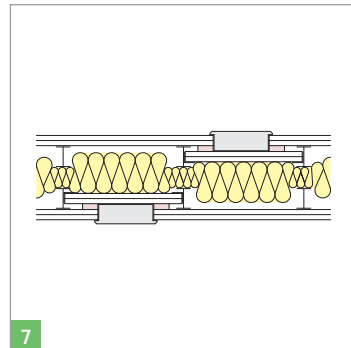


- Boards are screw-fixed to all framing members at 300mm centres to form the lining. Under layer boards do not require centre fixings. Cut and fix the initial second layer board as appropriate so that subsequent board joints are staggered.
- Reduce centres to 200mm at external angles.



Services

- Install services (by appropriate trades), normally after one side is boarded. Pass horizontal runs through cut-outs in the studs.
- Install Gypframe 99 FC 50 Fixing Channel or Gypframe Floor & Ceiling Channel between studs to provide support for recessed switch boxes.



- Fix Gypframe GA4 Steel Angle to web of metal studs with two Gyproc Wafer Head Screws. The face layer of pattress to be equal in specification to face layer of partition boarding. The second layer of board forming pattress to be equal in specification to face layer of partition board or, alternatively, an equal thickness of ply if preferred. The boards are screw-fixed to the Gypframe GA4 Steel Angle with Gyproc Drywall Screws.



8

- Alternatively Hilti CP617 Putty Pads can be used, contact Hilti for full details, tel: 0800 886100
- All performance substantiation has to be provided by the fire-stopping manufacturer as is the case for any fire-stopping material.



9

Fixtures

- Additional framing is installed as required to support fixtures. For light to medium fixtures Gypframe 99 FC 50 Fixing Channel can be used. Install Gypframe 150 FC 90 Fixing Channels to accommodate heavyweight fixtures. If a plywood pattress is required, Gypframe Service Support Plates should be used.

- Install Isover insulation (as required) progressively as boarding proceeds.
- Isover insulation can be hung within the partition by trapping at the partition head using Gypframe Steel Angle.

